

QUEENSLAND RECONSTRUCTION AUTHORITY

Monthly Report

September 2014

Document details:

Security classification	Public
Date of review of security classification	September 2014
Authority	Queensland Reconstruction Authority
Author	Chief Executive Officer
Document status	Final
Version	1.0

Contact for Enquiries:

All enquiries regarding this document should be directed to:

Queensland Reconstruction Authority

*Phone the call centre - **1800 110 841***

Mailing Address

Queensland Reconstruction Authority

PO Box 15428

City East Q 4002

Alternatively, contact the Queensland Reconstruction Authority by emailing info@qldra.org.au

Licence

This material is licensed under a [Creative Commons - Attribution 3.0 Australia licence](#).



The Queensland Reconstruction Authority requests attribution in the following manner:

© The State of Queensland (Queensland Reconstruction Authority) 2011-2014

Information security

This document has been classified using the [Queensland Government Information Security Classification Framework \(QGISC\)](#) as PUBLIC and will be managed according to the requirements of the QGISC.

Message from the Chief Executive Officer

Major General Richard Wilson AO
Chairman
Queensland Reconstruction Authority

Dear Major General Wilson

It is with pleasure that I present the September 2014 Monthly Report – the 43rd report to the Board of the Queensland Reconstruction Authority (the Authority).

The Authority was established under the *Queensland Reconstruction Authority Act 2011* following the unprecedented natural disasters which struck Queensland over the summer months of 2010-11. The Authority is charged with managing and coordinating the Government's program of infrastructure renewal and recovery within disaster-affected communities, with a focus on working with our State and local government partners to deliver best practice expenditure of public reconstruction funds. Following the widespread damage caused by ex-Tropical Cyclone Oswald in early 2013, the jurisdiction of the Authority was expanded by the *Queensland Reconstruction Authority Amendment Bill 2013* to cover this and other 2013 disaster events.

The September report provides an update on the progress of recovery. The Authority's focus on delivery remains as there is still a considerable program of works from Tropical Cyclone Oswald and other events of 2013 and 2014 to manage through the damage assessment, submission preparation and approval and delivery phases. Concurrently, the Authority is focused on closing out the massive volume of recently completed works for acquittal to the Commonwealth.

Inclusive of these tasks, the Authority is managing a total program of works for events from 2009 through to 2014 with an estimated total cost of \$13.4 billion. As at 1 September 2014:

- an additional \$77 million in submissions have been received by the Authority since last month
- an additional \$43 million has been processed by the Authority since last month
- a cumulative value of \$11.9 billion of the \$13.4 billion works program (2009 to 2014) has been reported to the Authority as being in progress or delivered by delivery agents as at 31 July 2014.

The September report highlights North Burnett Regional Council's rapid progress on its 2013 program of works, including the recent completion of two betterment projects, the Gayndah-Mundubbera Road and Gayndah Water Supply Intake Station. The report also spotlights the recent completion of a third betterment project, the Margate seawall, and the reopening of a key route on the Burnett Highway across the Mount Morgan range which suffered 35 landslips as a result of Tropical Cyclone Oswald. Updates on the progress of major reconstruction projects underway are also profiled in the report, as is the status of recovery efforts following Severe Tropical Cyclone Ita.

This month's report is my final as Chief Executive Officer of the Authority. It has been a privilege to serve in this position since the establishment of the Authority in February 2011, in the wake of the most significant disasters in Queensland's recorded history. The role has held many challenges, but it has always been extremely rewarding to work alongside the talented and dedicated people across the State that have participated in the recovery and reconstruction effort. The experience we have gained, the partnerships we have built, and the innovations we have implemented in this time place Queensland at the forefront of the world in management of disaster recovery and resilience.

I commend the report to you and recommend its release to the Minister and the public pursuant to Section 41 of the *Queensland Reconstruction Authority Act 2011*.

Yours sincerely



Graeme Newton
Chief Executive Officer
Queensland Reconstruction Authority

Contents

1.0 Introduction	1
1.1 Background	2
1.2 Purpose	2
1.3 Timing	2
2.0 Disaster Assistance	3
2.1 Queensland Disaster Assistance Framework	4
2.2 Disaster assistance by event period	5
2.3 Events managed by the Authority	6
2.4 Additional assistance measures	7
2.4.1 Betterment fund	7
2.4.2 Other assistance measures	7
3.0 Program Status	8
3.1 Recent developments	9
3.2 Combined program status	9
3.3 Program of works expenditure	9
3.4 State-wide pipeline of works	10
3.5 State-controlled roads and highways	11
3.6 Betterment fund status	12
4.0 Progress Reports	13
4.1 Iconic projects in reconstructing Queensland	14
4.2 Program spotlights	16
5.0 Communications	21
5.1 Communicating progress	22
5.2 Media reports	23
<u>Appendices</u>	
Appendix A: Local Government Areas by Region	25

Section one:
Introduction



1.0 Introduction

1.1 Background

Queensland has been struck by a series of unprecedented natural disasters in recent years. Between November 2010 and April 2011, extensive flooding caused by periods of extremely heavy rainfall, destruction caused by a number of storm cells including Cyclones Tasha, Anthony and Severe Tropical Cyclone Yasi and subsequent monsoonal flooding, resulted in all of Queensland being declared as disaster affected.

On 21 February 2011 in response to the 2011 disaster events, the Queensland Government established the Queensland Reconstruction Authority (the Authority) under the *Queensland Reconstruction Act 2011*. The Authority's role was subsequently extended to cover historical and continuing disaster events in Queensland.

The Authority has since been given responsibility to administer Natural Disaster Relief and Recovery Arrangements (NDRRA) for the large scale natural disaster caused by Tropical Cyclone Oswald in late January 2013 and additional events which have occurred in the 2013 and 2014 disaster event periods. The *Queensland Reconstruction Authority Amendment Bill 2013* was passed on 14 February 2013 to expand the jurisdiction of the Authority to include the 2013 events.

1.2 Purpose

The Authority's mission is **to reconnect, rebuild and improve Queensland communities and its economy**.

The Authority is charged with managing and coordinating the Government's program of infrastructure renewal and recovery within disaster-affected communities, with a focus on working with our State and local government partners to deliver best practice expenditure of public reconstruction funds.

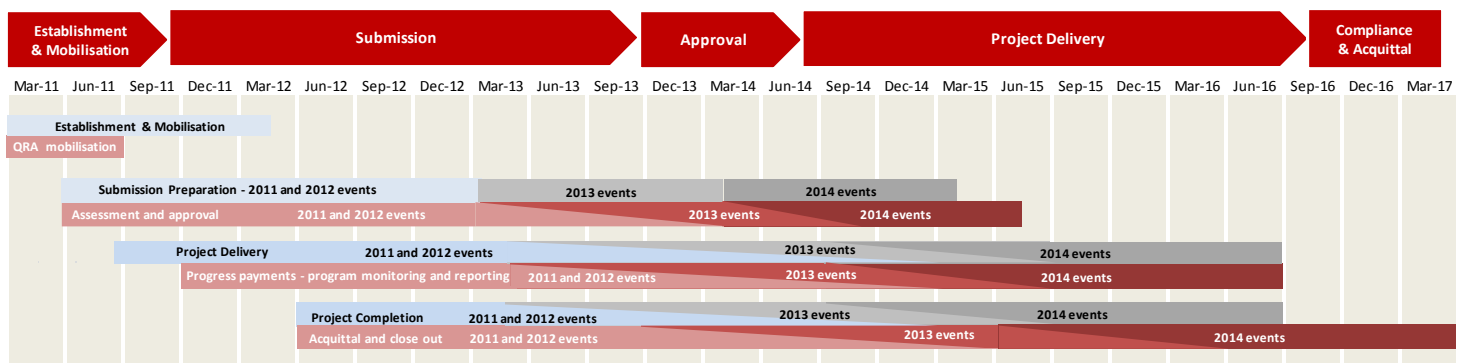
The Authority operates with reference to recovery and reconstruction plans established by the State in response to the 2011 disaster events and more recently following Tropical Cyclone Oswald in 2013 and Severe Tropical Cyclone Ita in 2014. Most recently, the Severe Tropical Cyclone Ita Recovery Plan (Recovery Plan), provides strategic guidance for the coordination and management of recovery, reconstruction and community resilience activities undertaken across the State after the flood and damage impacts of Severe Tropical Cyclone Ita.

An overview of the Recovery Plan, and update on the progress against key metrics is set out in Section 4.

1.3 Timing

The Authority's priorities are currently assisting councils and State agencies to complete their reporting and progress through the close out and acquittal phase of their program of works from the 2011 and 2012 disaster periods, with the bulk of the reconstruction work having occurred prior to 30 June 2014.

The Authority is also assisting with the damage assessments from the 2014 events and monitoring of the remaining 2012, 2013 and 2014 programs into, and through, the project delivery phase as soon as practicable.



Section two:
Disaster Assistance

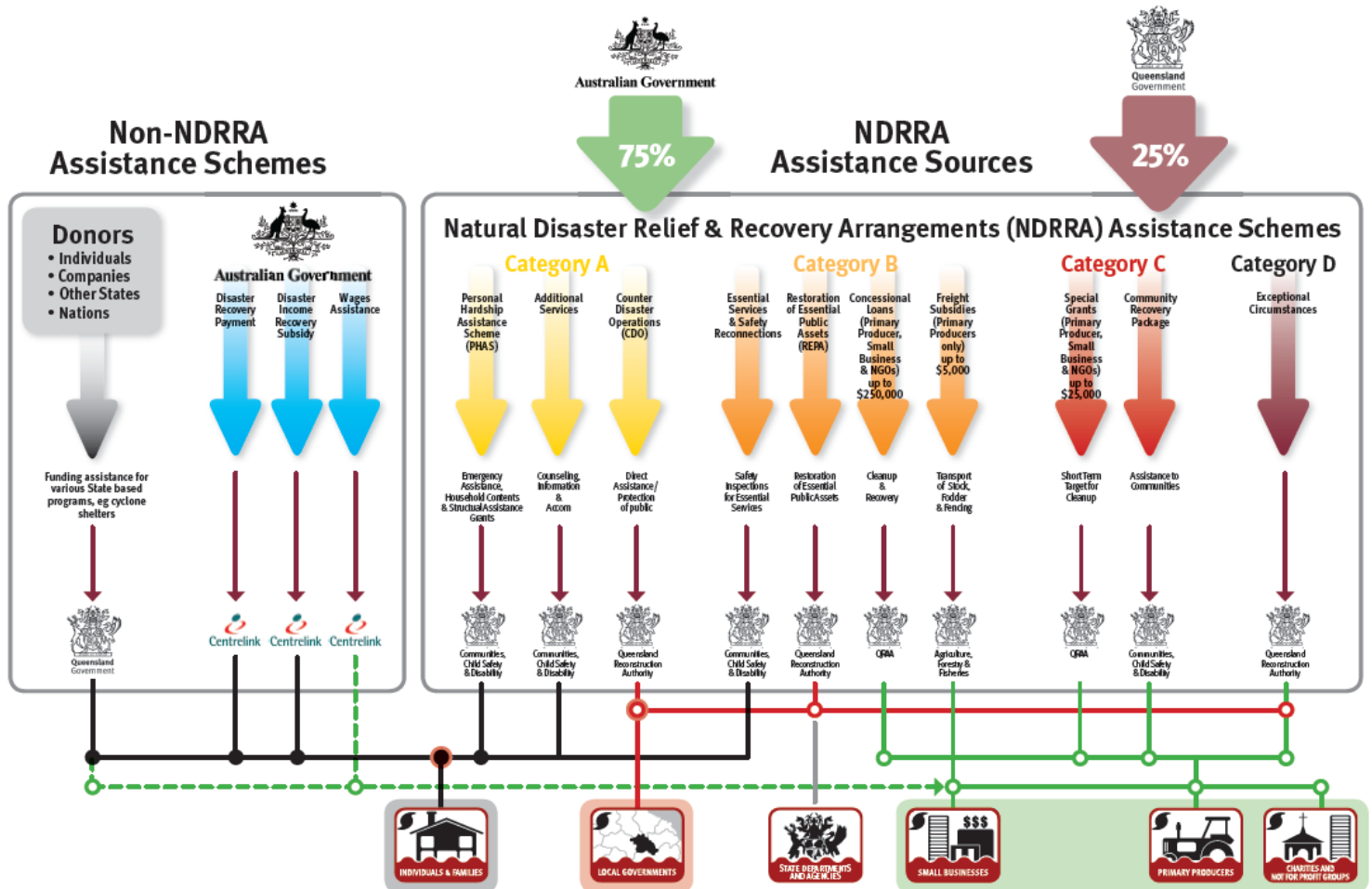


2.0 Disaster Assistance

2.1 Queensland Disaster Assistance Framework

The available Queensland Disaster Assistance schemes are separated between NDRRA (jointly funded by the Commonwealth and State governments) and Non-NDRRA funding schemes. The diagram below indicates the different elements of assistance available and how each element operates.

Figure 2.1.1 Queensland Disaster Assistance Framework



Whilst elements of the assistance schemes are delivered by other State agencies, all of the NDRRA assistance sources (and elements of the non-NDRRA assistance schemes) are administered by the Authority for historical and continuing disaster events in Queensland.

Disaster events managed by the Authority

The list of the activated disaster events managed by the Authority are set out in **Section 2.3** and can also be found on www.disaster.qld.gov.au.

The maps opposite show the LGAs activated for relief measures under NDRRA for each event period under the Queensland Disaster Assistance Framework.

This report includes references to event periods described as follows:

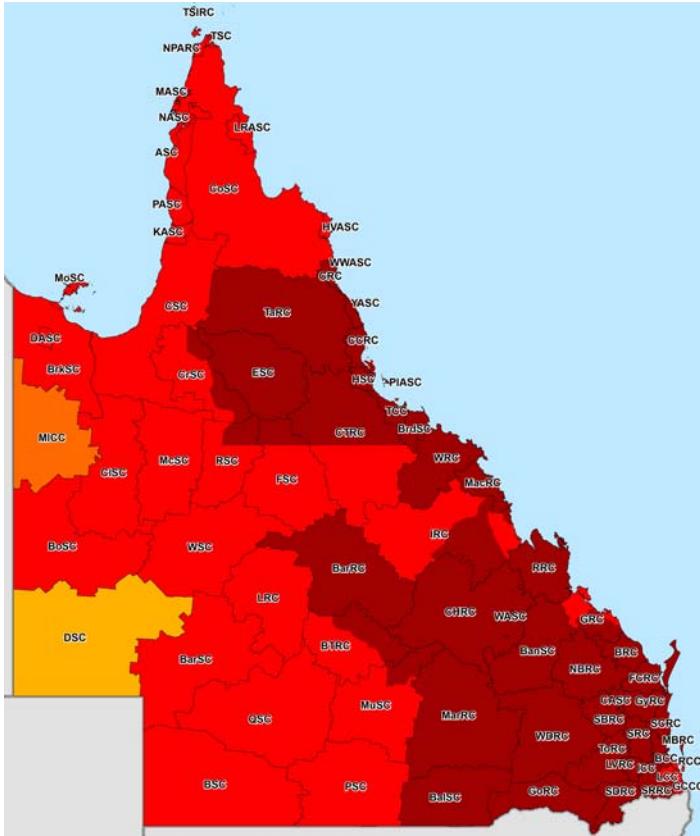
- **2014 events:** Activated disaster events managed by the Authority which occurred in the financial year ended **30 June 2014**
- **2013 events:** Activated disaster events managed by the Authority which occurred in the financial year ended **30 June 2013**, including Tropical Cyclone Oswald and associated rainfall and flooding (January 2013)
- **2012 events:** Activated disaster events managed by the Authority which occurred in the financial year ended **30 June 2012**
- **2011 events:** Activated disaster events managed by the Authority which occurred in the financial year ended **30 June 2011**, including Tropical Cyclone Yasi and Queensland flooding (November 2010 to February 2011)
- **2009-2010 events:** Activated disaster events managed by the Authority which occurred prior to 30 June 2010
- **Combined Program:** relates to all the activated disaster event programs managed by the Authority.

2.0 Disaster Assistance

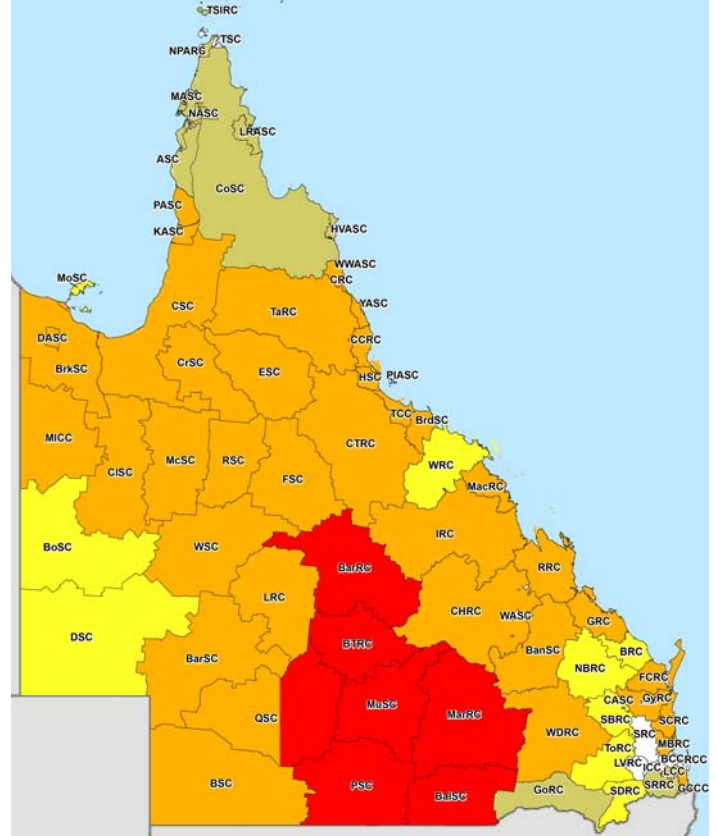
2.2 Disaster assistance by event period

The maps below show the LGAs activated for relief measures under NDRRA for each event period managed by the Authority under the Queensland Disaster Assistance Framework.

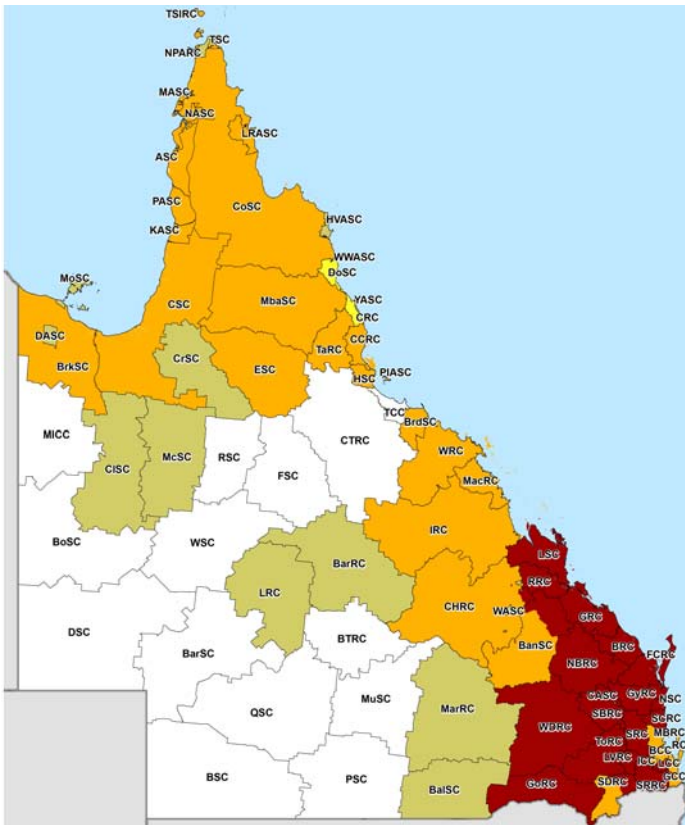
Map 1 - LGAs disaster activated under NDRRA for 2011 events



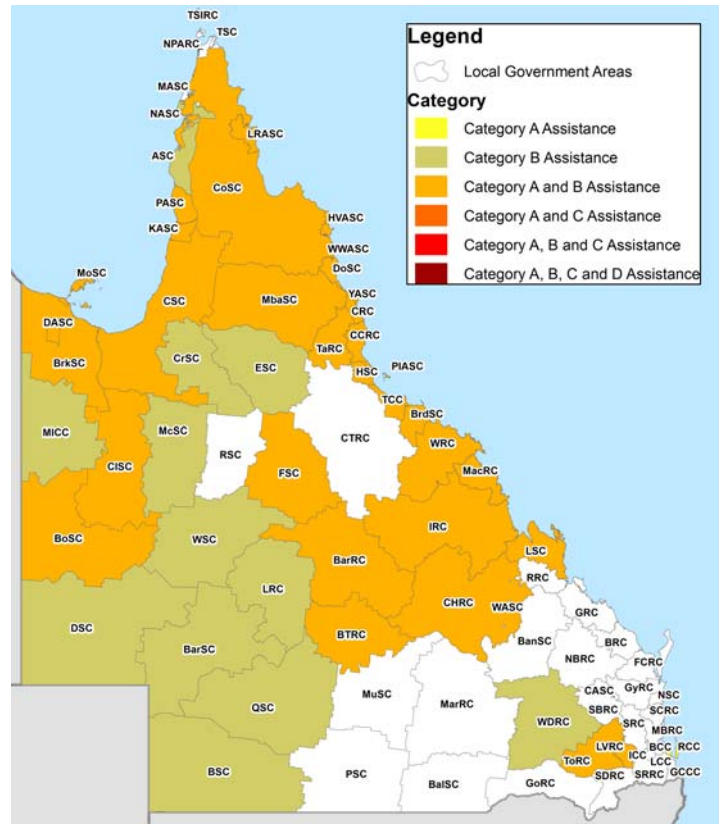
Map 2 - LGAs disaster activated under NDRRA for 2012 events



Map 3 - LGAs disaster activated under NDRRA for 2013 events



Map 4 - LGAs disaster activated under NDRRA for 2014 events



* Refer Appendix A for glossary of LGA abbreviations

2.3 Events managed by the Authority

The Authority has responsibility to administer NDRRA relief measures for historical and continuing disaster events in Queensland. The Authority currently manages and coordinates the infrastructure reconstruction and recovery for 26 disaster events activated for NDRRA relief measures since the Authority's establishment in February 2011 and the remaining program of works for an additional 16 disaster events which occurred prior to the Authority's establishment.

During July 2014, activation of the *Far North Queensland Peninsula Flooding (27-31 January 2014)* event for NDRRA financial assistance occurred.

2014 events:

- Tropical Cyclone Ita & Associated Rainfall & Flooding, 11-14 April 2014
- Tropical Cyclone Gillian—10 to 11 March 2014
- Central Coast & Southern Queensland Trough, 26-30 March 2014
- Central & Western Queensland Flooding & Rainfall, 18-28 February 2014
- North East Queensland Monsoonal Rainfall and Flooding - 7 to 9 February 2014
- Tropical Cyclone Fletcher, commencing 2 February 2014
- Far North Queensland Peninsula Flooding (27-31 January 2014)
- Tropical Cyclone Dylan, 31 January 2014
- North Stradbroke Island Fires, commencing 29 December 2013

2013 events:

- South West Queensland Wildfires, 21 December 2012
- Far Northern Queensland Bushfires, late October - December 2012
- Tropical Cyclone Oswald and Associated Rainfall and Flooding, 21-29 January 2013 *
- Longreach Flood, 18 February 2013 #
- Central & Southern Queensland Low, 25 February - 5 March 2013 #

2012 events:

- Queensland Bushfires, August to October 2011
- Localised Heavy Rainfall Northern Queensland, October 2011 *
- Southern Queensland Flooding, November to December 2011*
- South East Queensland Heavy Rainfall and flooding, 23- 26 January 2012 *
- Western Queensland Tropical Low, January - February 2012 *
- Far Northern Queensland Tropical Low, 3-4 February 2012 *
- North Coast Queensland Storms and flooding and East Coast Hybrid Low, 24 February - 7 March 2012 *
- Northern and Far Northern Queensland Heavy Rainfall & flooding, 15 March 2012 *
- East Coast Low, 22 March 2012 *

2011 events:

- Queensland Flooding and Tropical Cyclones Tasha and Anthony, November 2010 to February 2011*
- Severe Tropical Cyclone Yasi on 2 February 2011*
- Queensland Monsoonal Flooding Event, 8 February 2011*
- South West Flooding, April 2011*

2007-2010 events managed by the Authority:

- South East and North Coast Queensland East Coast Low, August 2007
- South West Queensland storms and flooding, 23-30 November 2007
- Central Western Queensland storms and flooding, 22-30 December 2007
- South East Queensland East Coast Low, 27 December 2007 - 7 January 2008
- Queensland Monsoonal flooding, January 2008
- Queensland Monsoonal flooding, February March 2008
- South West Queensland flooding, June 2008
- Queensland storms and associated flooding, 16-22 November 2008
- Queensland Monsoonal flooding and Tropical Cyclone Charlotte and Ellie, January - February 2009
- South East Queensland Low, May 2009
- Queensland Bushfires, September – October 2009
- South West Flooding, 20 – 25 November 2009
- Northern, Central and South West Queensland Flooding, 22 December 2009 to 8 January 2010
- Queensland Monsoonal Flooding and Tropical Cyclones Olga, Neville, Ului and Paul, January to April 2010
- South West Queensland Low and Associated Flooding, September 2010
- 2010 South East Queensland Flooding, 9-12 October 2010.

The maps opposite show the LGAs activated for relief measures under NDRRA for each event period managed by the Authority under the Queensland Disaster Assistance Framework.

* Events covered under the National Partnership Agreement for Natural Disaster Recovery and Reconstruction (NPA) between the State and Commonwealth Government signed 8 February 2013 (NPA Events).

Pending agreement to extend the NPA to include two additional 2013 events - Longreach Floods, 18 February 2013 and Central and Southern Queensland Low, 25 February - 5 March 2013.

2.4 Additional assistance measures

The State Government in conjunction with the Commonwealth have activated a range of jointly-funded Category C, Category D and other relief measures to alleviate distress due to the impact of Tropical Cyclone Oswald and the 2011 events. The measures are summarised below:

2.4.1 Betterment fund

On 8 February 2013, the Queensland Government signed the National Partnership Agreement (NPA) with the Commonwealth Government which recognised the need for a more streamlined process for the approval of Betterment funding. The Queensland Government announced a \$40 million commitment to Betterment funding which will match the Commonwealth Government contribution, resulting in the establishment of the \$80 million Betterment Fund.

In August 2013, the Betterment fund was extended beyond its original coverage of LGAs declared for NDRRA assistance for Tropical Cyclone Oswald to also cover LGAs declared for the two additional disaster events that occurred through to June 2013 (Longreach Flood (18 February 2013) and Central and Southern Queensland Low (25 February to 5 March 2013)). The Betterment fund is available for the restoration or replacement of essential public assets to a more disaster resilient standard than their pre-disaster standard. The intent of betterment is to increase the resilience of communities to natural disasters, while at the same time reducing future expenditure on asset restoration, reducing incidents, injuries and fatalities and improving asset utility during and after disaster events.

Where a damaged asset is approved as a betterment project, the normal cost of restoring or replacing the asset to its pre-disaster standard will continue to be funded under Category B of NDRRA assistance and the incremental cost to 'better' the asset to a more disaster-resilient standard will be financed from the Betterment fund. The status of the Betterment fund is set out in Section 3.7 of this report.

2.4.2 Other assistance measures

Tropical Cyclone Oswald

- **Community Recovery Package - \$5 million** - Funding for community development officers in the hardest hit communities of Bundaberg and North Burnett, support for mental health services and a flexible fund that assists communities to implement engagement and development activities.
- **Clean Up and Recovery program - \$10 million** - Program to assist primary producers to clear debris and restore fencing in the worst affected areas; to maintain workers while income generating activities are reduced and to clear debris from watercourse that poses a hazard to downstream infrastructure and activities.
- **Industry Recovery Officers - \$1.5 million** - Placement of Industry Recovery Officers to assist business and primary producers recover from flooding.
- **Enhanced concessional loans and grants** - Loans of up to \$650,000 (with a grant component of up to \$50,000) are available to applicants that have suffered extreme damage such that the existing concessional loan and recovery grants under NDRRA category B and C are insufficient to support recovery.
- **Environmental Recovery program - \$10 million*** - Program to fund existing programs to conduct flood specific clean up and soil conservation work following the 2013 flooding.
- **Rural Financial Counselling Services - \$1.5 million*** - Provision of financial planning advice for rural businesses and primary producers to assist in the recovery of local economies following the disaster.
- **Other measures - \$4.9 million** to fund dredging works to restore Bundaberg Port to its pre-2013 flood clearance depths; and **\$900,000** to assist Bundaberg Regional Council meet the cost of recovery works for community parks and gardens.

2011 events

- **Queensland Local Council Package - \$315 million** - Funding to help local councils repair utilities and infrastructure, and support their efforts in recovering from the floods and Cyclone Yasi. The package comprises two components: \$265 million to fast-track the repair of damaged infrastructure, including the Strengthening Grantham project, Brisbane ferry terminals and Riverwalk; and \$50 million to contribute to regional and remote councils employing people to perform important clean-up and repair work.
- **Cassowary Coast Support Package - \$15 million** - Funding to restore vital council infrastructure and restore natural vegetation and beach damage in the Cassowary Coast region. Specifically, the Support Package provides for the repair of Dunk Island Jetty, the repair of Clump Point Jetty and the restoration of Cardwell beach foreshore and its natural vegetation.
- **Exceptional Disaster Assistance Scheme** - Concessional interest loans of up to \$650,000, with grant component of up to \$50,000, to eligible businesses, primary producers and not-for-profit organisations that suffered extreme damage.

In addition, the State Government and Commonwealth have agreed to an extended Day Labour Trial, which enables councils to deliver restoration works with their own workforce on condition that they provide evidence of savings in both time and cost.

* Non-NDRRA measures funded 50% by the State and 50% by the Commonwealth; Commonwealth share is being delivered directly through existing Commonwealth programs.

Section three:

Program Status



3.0 Program Status

3.1 Recent developments

Following 30 June 2014, the timeframe for councils and state agencies to complete much of the works from the devastating floods and cyclones of early 2011 and the series of events which impacted the state in the summer of 2011-12 has now passed. Whilst formal reporting of completion continues to be received, councils and state agencies have consistently indicated that relevant works were completed on time. This is a major achievement as councils and state agencies collectively delivered around \$8.3 billion of recovery and reconstruction works from the 2011 and 2012 events over this time.

Whilst the delivery phase of much of the program has now passed, the Authority’s focus on delivery remains as there is still a significant program of works from Tropical Cyclone Oswald and other events of 2013 and 2014 to manage through the damage assessment, submission preparation and approval and delivery phases.

Concurrently, the Authority has the considerable task to close out and acquit completed works. Work is underway to close out the massive volume of works completed prior to 30 June 2014 on the 2011, 2012 and 2013 events for acquittal in the 2013-14 Commonwealth Claim.

3.2 Combined program status

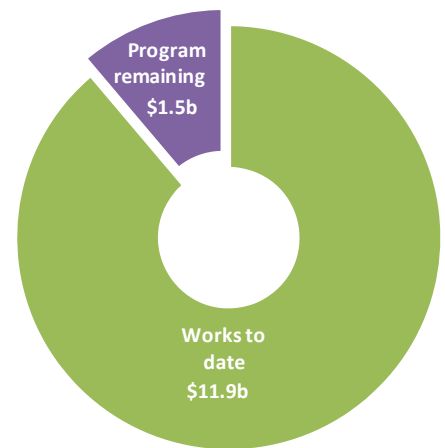
Following completion of the June 2014 NDRRA estimates review process, the estimated program of works for all events actively managed by the Authority (2009 to 2014) is \$13.4 billion.

The estimated cost of the damage from the 2014 Events is \$0.45 billion, the damage from the 2013 Events is estimated to be \$2.1 billion and the cost of the 2011 and 2012 Events is estimated to be \$6.8 billion and \$1.7 billion respectively. The cost of the 2009-10 Events managed by the Authority has also been finalised at \$2.4 billion following acquittal of the remaining works from these programs in the 2012-13 Commonwealth Claim.

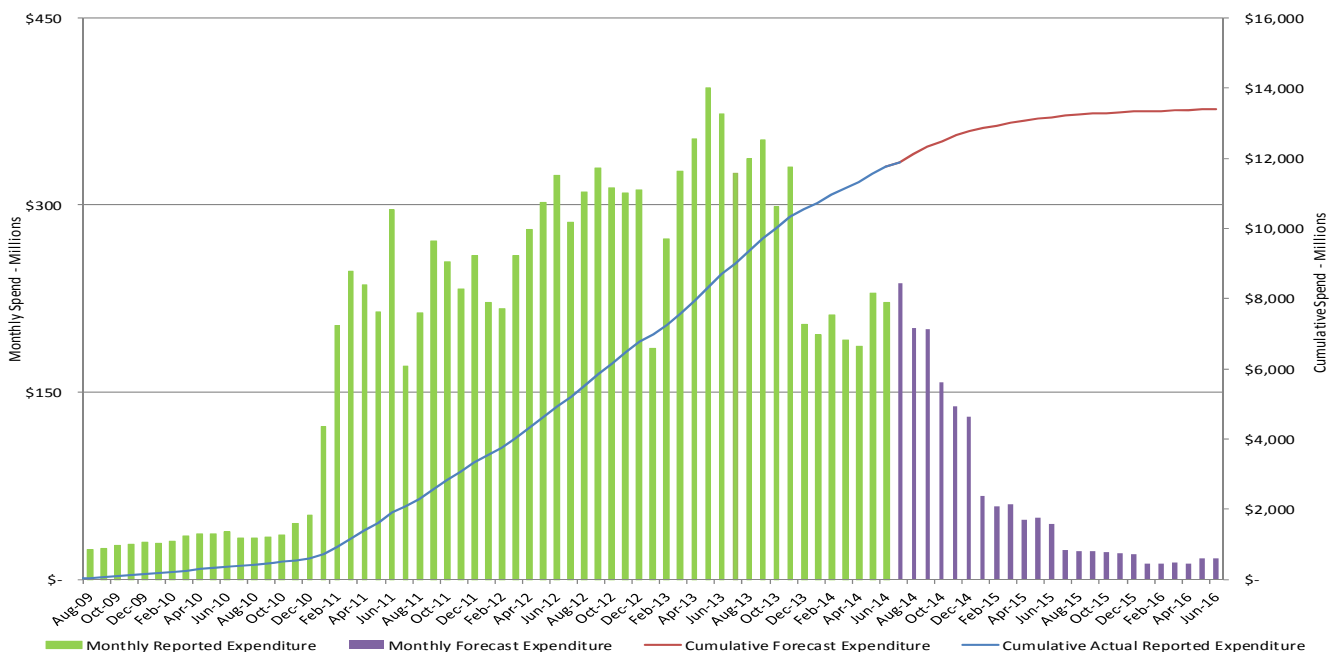
Since the last report, the combined program of works for all events managed by the Authority has progressed as follows:

- a cumulative value of \$17.9 billion in submissions have been received by the Authority to 1 September 2014, representing an increase of \$77 million since last month
- a cumulative total of \$16.9 billion has been processed by the Authority to 1 September 2014, representing an increase of \$43 million since last month
- a cumulative value of \$11.9 billion of the \$13.4 billion works program (2009 to 2014) has been reported to the Authority as being in progress or delivered by delivery agents as at 31 July 2014.

Figure 3.2.1 Combined program progress as at 31 July 2014



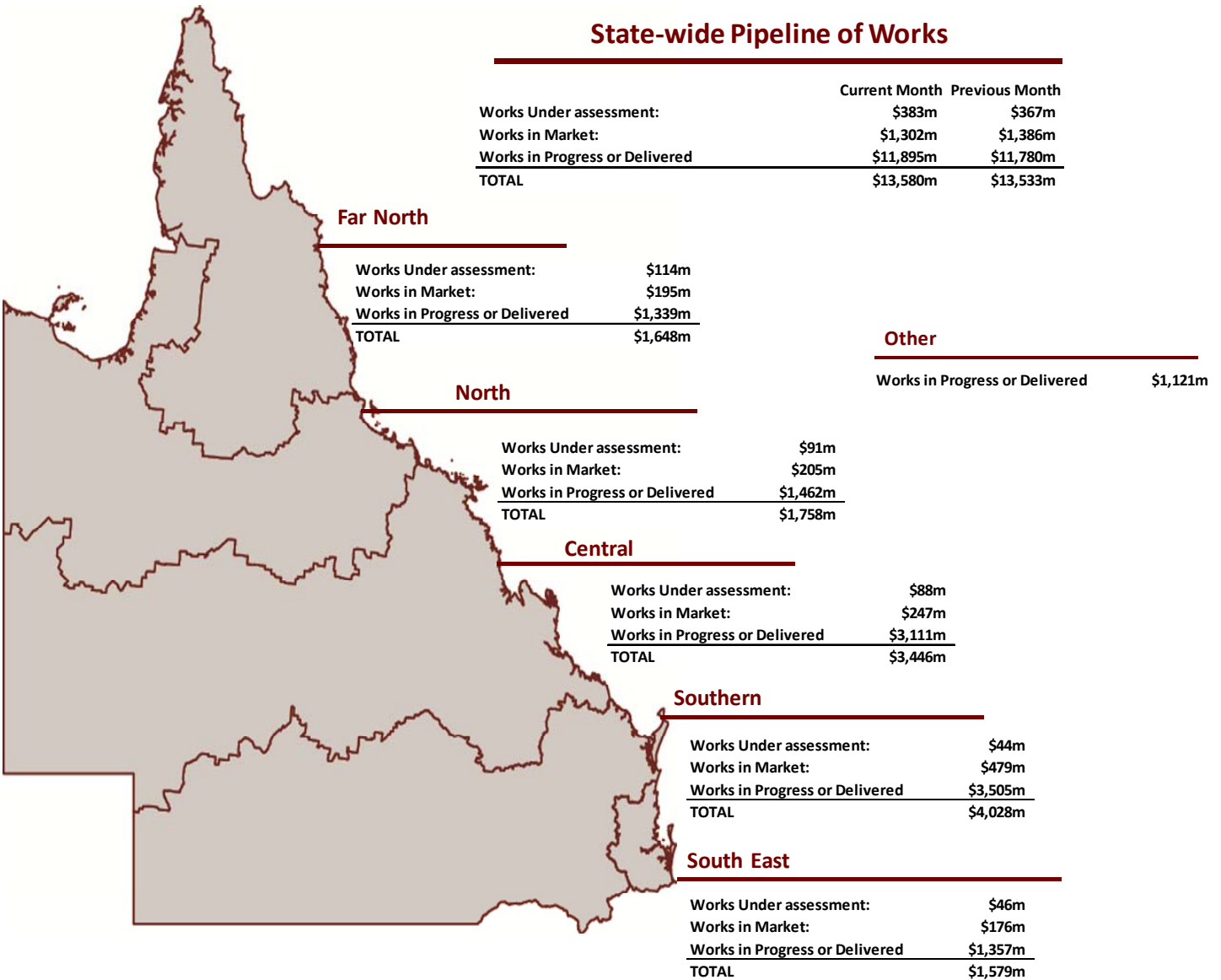
3.3 Program of works expenditure



Source: the Authority - June 2014 NDRRA Estimates Review & 1 September 2014

3.4 State-wide pipeline of works

Following completion of the June 2014 NDRRA estimates review process, the Pipeline of works for events actively managed by the Authority (2009 to 2014) has an estimated program value of \$13.4 billion, the status of which is set out below.



Source: DTMR at 31 July 2014; & Authority at 1 September 2014

Note:

1. Works Under Assessment and Works in Market represents data as at 31 July 2014 (DTMR) and 1 September 2014 (LGAs and Other). Works in Progress or Delivered represents spend by delivery agents to 31 July 2014 as reported to the Authority at 1 September 2014. Additional works have been conducted but are yet to be reported to the Authority
2. Other encompasses SDAs other than DTMR as well as the 2011 and 2013 Other Assistance.

Pipeline of Works Definitions

Stage	Description
Works under Assessment	Applications for packages which are currently under assessment by the Authority or are awaiting additional information from the applicant.
Works In Market	Estimate of spend remaining on works in progress and packages which have been approved by the Authority and are in the tender or contract process.
Works in Progress or Delivered	Expenditure as reported to the Authority on packages in progress or delivered.

Source: DTMR at 31 July 2014; and the Authority at 1 September 2014

3.5 State-controlled roads and highways

DTMR's Transport Network Reconstruction Program (TNRP) manages the recovery and reconstruction of Queensland's integrated transport system to reconnect Queensland communities and economies following the damage from natural disaster events in 2010, 2011, 2012 and 2013.

DTMR's reconstruction program as a result of the natural disasters of 2014 is currently being scoped and will be provided in future reports.

The transport system includes state-controlled roads, ports, navigation aids and the rail network.

The current state of activity:

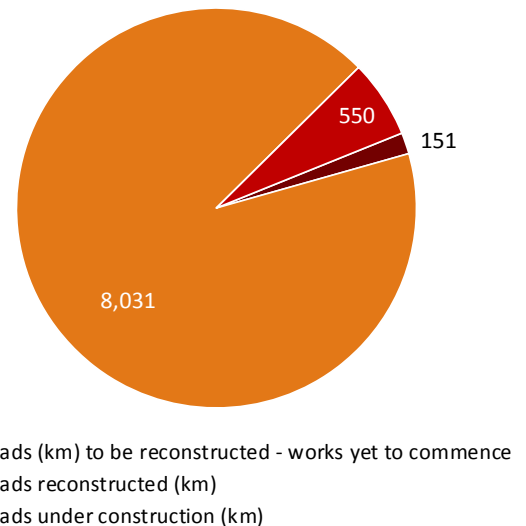
- **Roads** – \$6.0 billion of projects have been completed for both recovery and reconstruction works for works resulting from the disaster periods of 2010 to 2014 and \$505 million of reconstruction works are currently underway. Of the 8,732km of roads which DTMR plans to reconstruct following damage from the 2010 to 2013 natural disaster events*, 8,031km had been reconstructed to 31 July 2014. A further 550km of road is under construction on active works contracts. *See Figure 3.6.1 TNRP Summary map.*
- **Rail** – 3,100km (43%) of Queensland Rail lines were closed or had limited access due to the natural disaster events in early 2013, and all have been recovered and services resumed.
- **Maritime** – repairs have been required to navigation aids, jetties and other boating infrastructure following natural disasters from 2010 to 2013. The events of 2013 affected seven ports (all of which have since been reopened without restriction) and damaged or destroyed 348 aids to navigation, of which 347 have since been recovered and 1 temporarily fixed.

Key achievements:

- During July 2014, DTMR expended approximately \$90 million on reconstruction works across the State arising from the natural disaster events of 2012, 2013 and 2014. DTMR has until 31 December 2014 to complete its remaining 2012 event works, until 30 June 2015 complete its 2013 program and to 30 June 2016 to complete its 2014 programs of works.
- The cumulative spend on reconstruction of the transport network to 31 July 2014 is \$6.1 billion for works resulting from the 2010 to 2014 disaster periods.
- There was 143km of damaged roads reconstructed in July 2014 bringing the total reconstructed since the program commenced to 8,031km (92%) of the total damaged roads which DTMR plans to reconstruct from the 2010 to 2013 events*.
- Construction commenced on 57 projects valued at \$67 million in July 2014 including 2013 event works on the Warrego and Cunningham Highways on the Darling Downs; thirty 2013 event projects in Far North Queensland; works on Mount Glorious and Esk–Hampton Roads in the North Coast region; and seven 2013 event projects in Wide Bay/Burnett region.
- Construction was completed on 49 projects valued at more than \$140 million in July 2014 including on the Landsborough Highway (Blackall to Augathella and Winton to Kynuna) in Central West; Mount Sylvia Road and Surat Development Road on the Darling Downs; Flinders Highway in Northern region; and Tamborine Mountain Road and Mount Lindesay Highway in the South Coast region.

* reported kms to reconstruct represent works from damage caused by events in 2010, 2011, 2012 and 2013. Reporting on scope of reconstruction works from 2014 events will be provided in future reports following finalisation of TMR's reconstruction program for 2014 events.

Fig.3.6.1 Roads damaged/reconstructed - 2010 to 2013 events*



Above: sealing works underway Kennedy Highway, west of Mount Garnet - July 2014

Fig.3.5.2 TNRP summary of reconstruction works to date - July 2014

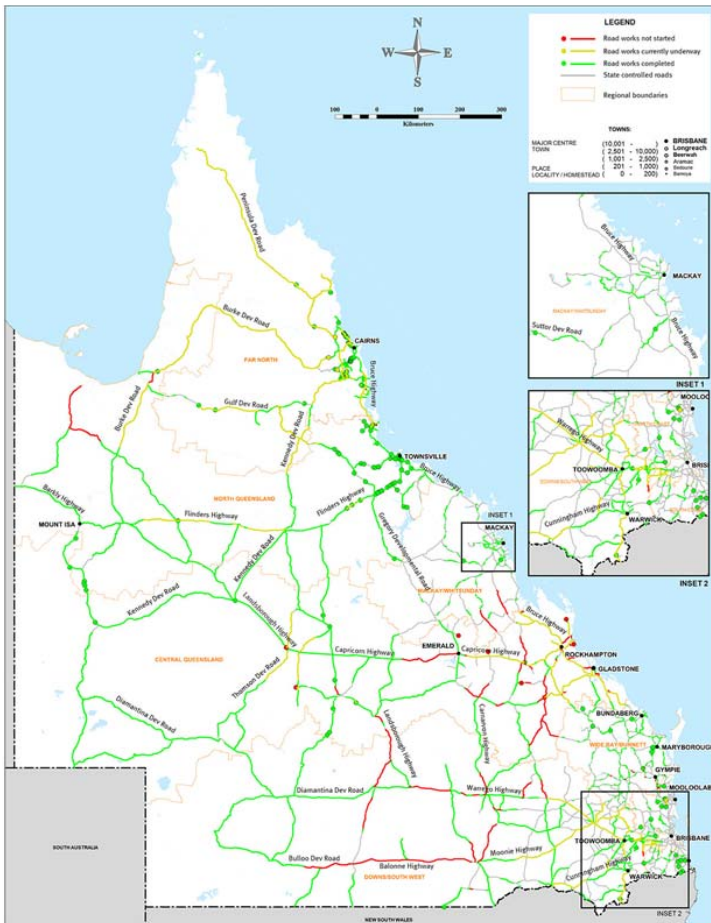
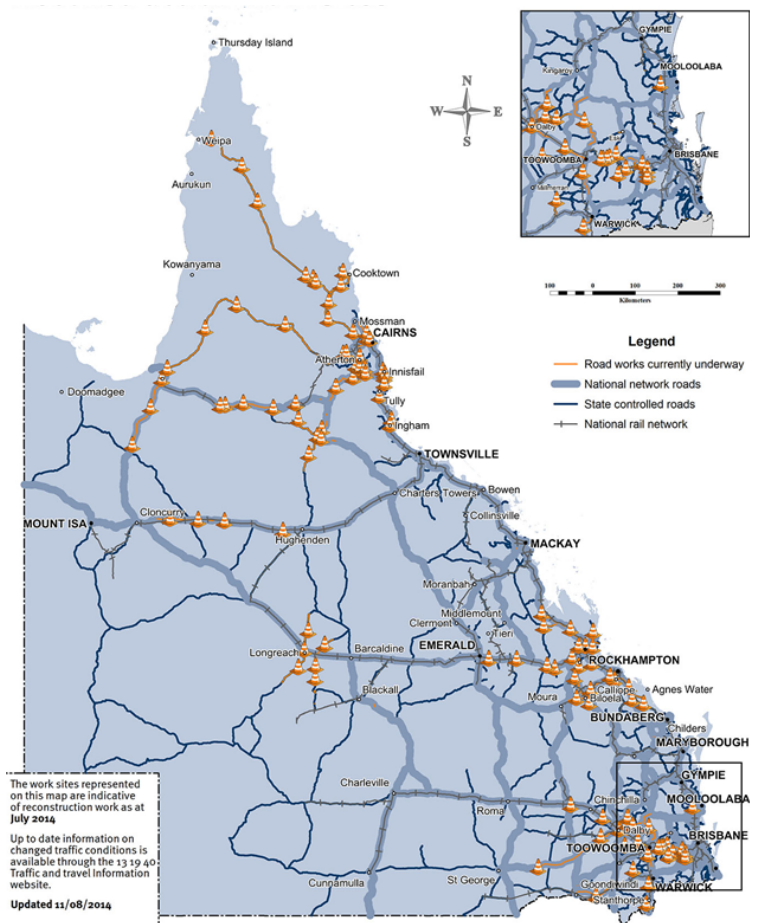


Fig 3.5.3 TNRP reconstruction work sites - July 2014



(Source: DTMR 31 July 2014)

3.6 Betterment fund status

The \$80 million Betterment fund is a Category D relief measure available to LGAs that have been declared for NDRRA assistance for the flood, storm and cyclone disaster events that occurred in Queensland in early 2013 for the restoration or replacement of essential public assets to a more disaster resilient standard than their pre-disaster standard.

The Betterment Fund was announced in February 2013 following Tropical Cyclone Oswald which caused damage to many of the assets which had been repeatedly damaged and restored from earlier disaster events. Correspondence was received from the Commonwealth in August 2013 agreeing to an extension of the Betterment fund to also cover LGAs declared for the two additional disaster events that occurred after Oswald through to June 2013 - Longreach Flood (18 February 2013) and Central and Southern Queensland Low (25 February to 5 March 2013).

Status

Expressions of Interest (EOI) were received by the Authority from 48 councils with approximately \$1 billion worth of Betterment projects to improve the resilience of infrastructure to natural disasters. Under the Betterment Framework, in addition to the normal NDRRA submission assessment process, the Authority considered the financial and non-financial benefits of the betterment proposal such as possible prior damage, loss of availability and its impact on economic or social factors of the community.

The majority of the Betterment Fund has now been allocated to approved projects. To 1 September 2014, 222 projects with an estimated total cost of approximately \$156 million have been approved. These projects are estimated to utilise \$77.5 million in Betterment funding with the balance funded through Category B NDRRA funding and Council contributions.



Since the last report, two projects have been approved for Betterment funding. South Burnett Regional Council has received approval to make Gordonbrook Dam spillway more resistant to future flooding; and Bundaberg Regional Council has been approved to upgrade the Booyal Crossing Road Causeway. An overview of the Gordonbrook Dam betterment project is set out in Section 4 of this report.

Works have commenced and are substantially progressed on a significant number of approved Betterment projects. To date, all 34 LGAs have started to deliver more than 190 of the 222 approved projects and a number of projects have been reported as substantially complete. Reports on the completion of the Gayndah Water Intake Plant, Gayndah-Mundubbera Road and the Margate Seawall Betterment projects are provided in Section 4.

Section four: Progress Reports



4.1 Iconic projects in reconstructing Queensland*

Project	Value (\$m)	Description	Status
<p>BCC Ferry Terminals (Cat D)</p>	<p>\$73.0</p>	<p>The January 2011 floods damaged all of Brisbane City Council's CityCat and City Ferry terminals. To return service as soon as possible, Council replaced the seriously damaged terminals with temporary terminals. Seven temporary terminals were built to pre-flood standards meaning that in the event of another major flood, it was likely it would need to be rebuilt again.</p> <p>Works to replace the terminals with more resilient, permanent structures are being delivered as part of a special (Category D) funding package for Brisbane City Council. The design of the new terminals integrates technical innovation, improved accessibility for all passengers and flood resilience.</p> <p>The replacement ferry terminals are located at The University of Queensland (St Lucia), Regatta (Toowong), North Quay (CBD), Maritime Museum (South Brisbane), QUT Gardens Point (CBD), Holman Street (Kangaroo Point), Sydney Street (New Farm) and Dutton Park.</p>	<p>In April 2014, Brisbane City Council announced McConnell Dowell Constructors as the successful tenderer to complete upgrades of the eight Ferry terminals.</p> <p>Works have commenced on the first two ferry terminal projects.</p> <p>Piling works at QUT Gardens Points started in June 2014 and construction of the new University of Queensland CityCat terminal began in early July 2014. Brisbane City Council's offsite prefabrication works for the pontoons and gangways are ongoing.</p> <p>Completion of all ferry terminal works is expected in mid-2015.</p>
			
		<p><i>QUT Gardens Point ferry terminal under reconstruction - September 2014</i></p>	<p><i>Illustration of Riverwalk's opening span in use allowing for the passage of vessels to moorings located within the area bordered by the walkway</i></p>
		<p><i>(Courtesy: Brisbane City Council)</i></p>	
<p>BCC Riverwalk (Cat D)</p>	<p>\$72.0</p>	<p>The Brisbane Riverwalk was a unique pedestrian and bicycle path which linked the city's CBD with the inner suburb of New Farm.</p> <p>The floating infrastructure was destroyed by the January 2011 floods and the whole structure was subsequently removed. Following detailed public consultation, Brisbane City Council decided to replace the previously floating walkway with a fixed, jetty-like 850 metre long structure between New Farm and the CBD.</p> <p>The walkway's 37 piles are anchored into the riverbed, providing the structure with a strong, more flood-resilient foundation. It will feature 24 hour lighting, separate pedestrian and cyclist paths and shaded rest areas. The design also includes a rotating opening span to allow for the passage of vessels to and from moorings.</p> <p>Funding for the project is being provided through special (Category D) funding under NDRRA arrangements.</p>	<p>Riverwalk has been constructed by John Holland Construction Group.</p> <p>Construction commenced in late July 2013 with a 55m-long barge mobilised in the Brisbane River carrying a 280-tonne crane and a piling rig. At the peak of construction, three barges were mobilised to install the girders.</p> <p>Completion of the final stage of construction was marked by the commissioning of the opening span on 26 August. The span allows for the passage of vessels to and from moorings located within the area of water bordered by the walkway.</p> <p>Brisbane City Council plan to officially open the Riverwalk in late September 2014.</p>

* Iconic projects represent projects that may be complex or of great significance to the local community.

4.1 Iconic projects in reconstructing Queensland (continued)

Project	Value (\$m)	Description	Status
Dawson Highway (Biloela to Banana)	\$5.6	<p>Following Tropical Cyclone Oswald in January 2013, the Biloela area experienced 193mm of rainfall over a four-day period.</p> <p>The rainfall caused the pavements of the Dawson Highway, between Biloela and Banana, to become saturated and suffer a loss of strength. This resulted in subsequent extensive pavement failures at various locations including potholing, rutting, shoving and longitudinal and crocodile cracking. The fast-flowing waters caused considerable erosion of batters, scouring and damage to structures.</p> <p>Reconstruction works will include pavement repairs and overlay, and repairs to existing drainage structures.</p>	<p>Detailed design of works arising from 2013 events was complete by the end of August 2013.</p> <p>The tender was awarded in January 2014 and construction commenced in July 2014.</p> <p>Works are expected to be completed by October 2014, weather permitting.</p>



Left: Pavement stabilisation works on the Dawson Highway



Above: Side track construction on the Warrego Highway.

Warrego Highway (Jondaryan to Dalby)	\$41m	<p>During the Tropical Cyclone Oswald natural disaster event in January 2013, the Warrego Highway pavement and foundations were saturated, resulting in structural weakening of the asset.</p> <p>This section of the road is built on predominantly flat terrain, which makes it vulnerable to water ingress through the pavement and foundations as adjacent table drains remain full for several weeks during and after these types of weather events.</p> <p>Long lengths of pavement failures across the full pavement width resulted along many section of the Highway.</p>	<p>The road construction contract was awarded to FK Gardner & Sons Group of Toowoomba.</p> <p>Construction started in July 2014.</p> <p>New traffic safety measures have been implemented for this project, including side tracks to keep both lanes of traffic open and moving during the reconstruction works. This will reduce travel time and the potential for accidents on this link of the Warrego Highway.</p> <p>Construction is expected to be completed by December 2014, weather permitting.</p>
---	-------	---	--

4.2 Program spotlights

North Burnett Regional Council Rising to the challenge following the 2013 floods

After being devastated by the floods of early 2013, North Burnett Regional Council has responded with speed and efficiency to be on track to deliver its huge program of reconstruction ahead of schedule and - with the help of Betterment funding - better, stronger and more resilient than before.

Tropical Cyclone Oswald hit the region hard and the scale of the reconstruction task was daunting. North Burnett sustained more than \$115 million in flood damage requiring the restoration of more than 500 rural roads and town streets, replacement of two bridges, reconstruction or replacement of three town water intakes and reconstruction and repairs to park infrastructure.



North Burnett Regional Council area under flood in 2013



Council acknowledged the scale of the damage and the project delivery challenge that it faced relative to its normal operations. The value of work required was in excess of three times Council's ordinary annual operation budget and was required to be completed within the relatively short timeframe of two years to qualify for NDRRA funding. At the time of the 2013 events, Council was little more than halfway through a \$25 million program of reconstruction works from the 2011 floods of two years earlier.

Almost immediately it established a NDRRA Operations Team and a Project Management Committee to co-ordinate the restoration efforts, and worked closely with the Authority and external consultants to ensure the rapid deployment and integrity of the huge procurement process.

The first Expression of Interest was released to the market in April 2013 with the final contract awarded in December 2013.

Left: Council's Manager Special Projects, Justin Kronk (left) with Chief Executive Officer, Mark JP Pitt (right) displaying the Award for Collaboration received at The Government Procurement Professional Awards - March 2014

Less than 18 months after the event passed, Council has delivered more than \$100 million of recovery and reconstruction works, including \$10 million of expenditure on Betterment projects to protect the region's vital road and public infrastructure.

North Burnett is also on track to complete the remaining works by December 2014, six months ahead of deadline.

The program has not only been delivered quickly but also with innovation and efficiencies. Across the program, Council has regularly been delivering savings to the approved values allocated for the works. Recognising these achievements, North Burnett Regional Council was presented with the Local Buy State Procurement Award for Collaboration at The Government Procurement Professional Awards in March 2014.

Profiles of four key 2013 Event reconstruction and betterment projects delivered by North Burnett Regional Council are profiled opposite.



Deputy Premier Jeff Seeney, Authority CEO Graeme Newton and Local Government, Community Recovery and Resilience Minister David Crisafulli at the official opening of the Gayndah Water Intake Station betterment project - August 2014

4.2 Program spotlights (continued)

North Burnett Regional Council Rising to the challenge following the 2013 floods

Gayndah Water Intake Station betterment project

The Gayndah water intake station was the first project approved for funding from the Betterment Fund. Just as \$1.2 million rebuilding works had been completed after the original pumping station was severely damaged in 2011, it was destroyed in 2013 during Cyclone Oswald.

The betterment project involved relocating the pump and water intake upstream of the Claude Wharton Weir and replacing the structure with a more flood-resilient design.

Stage one of the project started in November 2013 and saw the construction of a new raw water main to the water treatment plant while the second stage involved building the new submersible-style pumping station and water intake.

The project was completed in July 2014 for a total cost of approximately \$4 million, including about \$1.2 million from the Betterment Fund.



Gayndah Water Intake Station – damage to (above) and post Betterment works (right)



Damage to Gayndah-Mundubbera Rd (above) and on commissioning of the project with Federal Member for Flynn Mr Ken O'Dowd, Deputy Premier Jeff Seeney, Council Mayor Don Waugh and Minister David Crisafulli - August 2014 (right)



Gayndah-Mundubbera Road betterment project

Severely damaged in 2011, Gayndah-Mundubbera Road was repaired and then re-damaged again in the 2013 floods, resulting in its closure for three months. The damage and subsequent closure of the road had a dramatic effect on locals each time it flooded.

The \$6 million project included almost \$2 million from the Betterment Fund and involved relocating a two-kilometre section of the road adjacent to the Burnett River uphill by up to 11 metres. Associated stormwater drainage was also installed to provide even more flood protection.

The works started in February 2014 and were completed in July 2014.

Humphrey Binjour Road range crossing

Humphrey Binjour Road is a rural transport link across the Great Dividing Range, linking the citrus fruit growing region of Humphrey with the Burnett Highway and the major centres of Gayndah and Mundubbera.

Following damage in the floods of 2011 and subsequent flooding in 2013, extensive works were required to repair multiple landslips at over 14 sites along the road.

Council's restoration works involved clearing the landslips and using a combination of geotextile fabric in conjunction with bulk rock fill to stabilise the slope adjacent to the range. The shoulders of the road were reconstructed and a two coat bitumen seal has restored the range road to its original condition.

The works commenced in April 2014 with road completed and reopened in August 2014 for a total estimated cost of approximately \$2 million.



Humphrey Binjour Rd - damage to (above) and post works (left)



A section of Browns Road washed away following the 2013 floods (above); and the completed realigned road (right)



Browns Road

Browns Road is a single lane rural connector road approximately six kms west of Gayndah that ran directly adjacent to the Burnett River. The flooding of 2013 caused extensive damage to the road with many sections simply washed away.

Due to the extent of the damage it was not cost effective to restore the road at its original location. Council considered four options for the restoration of Browns Road, with the preferred value for money option involving the realignment of the road to a disused railway corridor on an adjacent rail reserve north of its original location.

The realigned road retains the same function and form as the previous road but has been constructed for a cost of approximately \$1.2 million, representing a substantial saving to the estimated cost of restoring the road in its original location.

4.2 Program spotlights (continued)

DTMR Mount Morgan Range reopens to traffic

Travelling families, residents and freight operators are once again driving the Mount Morgan Range, following the reopening of this key Central Queensland route on 22 June 2014.

The Mount Morgan Range section of the Burnett Highway connects Rockhampton to the township of Mount Morgan and beyond and usually carries about 3000 vehicles per day. The section of the road was severely damaged following ex-Tropical Cyclone Oswald in January 2013, with 35 landslips occurring along its length.

DTMR carried out extensive reconstruction works, which cost more than \$21 million and were undertaken over an 18-month period.

More than 70,000 tonnes of stabilising rock and materials were required to repair the slips and reinstate the road. The reconstruction works also involved installing soil nails, shotcrete and gabion rock walls to provide additional structural support for the road.

In addition to the reconstruction works, state-funded complementary works were carried out including improved drainage to help manage future rain events, resurfacing the full length of the range crossing and installing an additional 2.7km of guardrail to improve safety.



Top: Landslips and damage to the Mount Morgan Range following Tropical Cyclone Oswald

Bottom: Following reconstruction works, including complementary guardrail works



South Burnett Regional Council Betterment approval for Gordonbrook Dam Spillway

Gordonbrook Dam spillway will receive more than \$700,000 in betterment funding to make this vital piece of community infrastructure more resistant to future flooding.

South Burnett Regional Council owns and operates Gordonbrook Dam, which is the main water supply reservoir for Kingaroy.

Flood discharge through the spillway in recent years, including during flooding events of 2011 and 2013, caused damage to a number of areas in the channel downstream of the spillway. This included undermining of the foundations of the dam wall's embankment.

The failure of Gordonbrook Dam would result in major downstream property loss, damage to roads and infrastructure and could result in fatalities. Furthermore, disruption to the water supply to Kingaroy could have extensive cost and public health consequences.

To increase the resilience and flood immunity of the spillway, council will raise the height of the existing wall, providing erosion protection during major weather events and mitigating the risk of undermining.

The total cost of the project is approximately \$4.5 million.

Top: Severe erosion to the banks of the spillway on Gordonbrook Dam

Bottom: Undermining and erosion of the shotcrete wall and foundation near the spillway training wall

4.2 Program spotlights (continued)

Moreton Bay Regional Council Completion of Margate Seawall betterment project

The Margate seawall Betterment project on the Redcliffe peninsula has been officially re-opened by Minister for Local Government, Community Recovery and Resilience David Crisafulli and Moreton Bay Regional Council Mayor Allan Sutherland.

Severe weather generated by Tropical Cyclone Oswald in January 2013 lasted for three days in Margate, producing heavy surges and high waves on Moreton Bay's western foreshore and severely eroding Margate Beach, in some places by up to two metres.

The Margate Seawall supports a pedestrian and cycle path links Redcliffe and Scarborough along Margate Parade on the foreshore of Moreton Bay. The wall protects the foreshore from wave action and beach erosion during storm events, and provides protection for essential public assets and services located adjacent to the foreshore, including stormwater drainage, public car parks, shelter structure and underground utilities.

The storm surge undermined the existing shallow foundations of the wall. A 56 metre section of the wall and pathway suffered subsidence damage and structural collapse as a result, and was closed due to concerns for public safety. A further 200 metre section was considered at high risk of failure should another storm event occur.

The betterment project involved construction of a new stepped concrete seawall to protect the path and other essential assets during severe weather and storm surges. This solution is expected to significantly improve the asset's resilience and protection for adjoining essential assets and services. The seawall has been designed to match the existing seawall on adjacent sections of the foreshore, which was proven to have effective flood immunity in the 2013 events.

The total cost of the project was approximately \$2.8 million, and included approximately \$1.5 million Betterment funding. Council contributed complementary funding for new stairs, giving the public access additional access to the beach, as well as additional lighting along the shared pathway. Works commenced in February 2014 and were completed in August 2014.



Damage to (top) and following betterment works on Margate seawall project - August 2014 (bottom)



Celebrity chef, Miguel Maestre, at the 2014 Goomeri Pumpkin Festival

DTMR

Bumper pumpkin festival thanks to speedy road recovery at Goomeri

Severe widespread flooding across the Wide Bay/Burnett District as a result of ex-Tropical Cyclone Oswald damaged 44km of the district's state-controlled road network, including significant sections of the Burnett Highway, a state strategic road that provides the most direct link between the northern end of the New England Highway and Rockhampton.

Works to reconstruct 23 sections of the Burnett Highway between Goomeri and Gayndah were fast-tracked over five weeks to cater for increased traffic expected for the Goomeri Pumpkin Festival in May 2014. With more than 14,000 tourists anticipated to attend the festival and many camping with motorhomes and caravans, timely reconstruction of the highway was of utmost importance.

FK Gardner and Sons (FKG) was contracted to carry out the reconstruction project. The project's time constraints saw many sections of the highway being reconstructed simultaneously. Local residents, store owners, emergency services and tourists were informed about when work would commence in the area and how these changes would affect access.

Upcoming works, current updates and estimated delay times were provided to affected stakeholders through face-to-face consultation, telephone calls, mail-outs and a 13 19 40 website update. Bus and transport operators were also provided with alternative drop points and routes to ensure the safety and timeliness of their services.

Goomeri Pumpkin Festival coordinator Tricia McArthur said the efforts of the site crew ensured festival-goers were greeted with a safer road during their visit and the timeliness of the works completed prior to the event was appreciated.

4.2 Program spotlights (continued)

Severe Tropical Cyclone Ita Progress of recovery

Tropical Cyclone Ita was the largest cyclone to threaten Queensland since Severe Tropical Cyclone Yasi in 2011. Many communities were affected with 16 local councils in the state's north and far north activated for natural disaster assistance.

Inspector Kevin Guteridge, Queensland Police Service was appointed as Disaster Recovery Coordinator to head recovery efforts for the affected areas through the initial recovery period from 12 April to 30 June 2014.

The Severe Tropical Cyclone Ita Recovery Plan

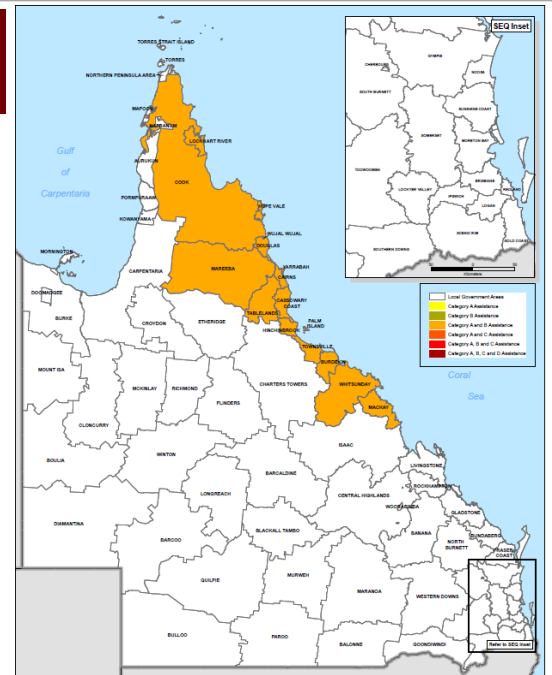
The Tropical Cyclone Ita Recovery Plan has also been established to assist disaster-affected communities get back on their feet as quickly as possible.

The Recovery Plan provides strategic guidance for the coordination and management of recovery, reconstruction and community resilience activities after the flood and damage impacts of the event. The Plan outlines how recovery arrangements provide for an efficient and effective response to get communities, industry and regional economic activity up and operational. It also aims to maximise the state's disaster resilience goals and outcomes by applying the guiding principles of the Queensland Strategy for Disaster Resilience.

In addition, the Authority continues to work in partnership with local communities to manage and coordinate the reconstruction of essential public assets.

Progress against key recovery tasks

The Recovery Plan details key recovery tasks necessary to achieve successful recovery outcomes in the areas impacted by the event, as well as recovery milestones and estimated completion dates of the projects to be undertaken by lead and support agencies. An update on the progress of recovery against the key metrics as reported by the relevant lead State agencies is set out below.



Councils activated for NDRRA assistance as a result of Tropical Cyclone Ita

Human and Social

- Personal support services are being provided to help individuals and families make decisions to affect their own recovery. To 31 August 2014, 278 hours of service has been provided to 89 clients through individual and group counselling sessions, an increase of 67 hours and 15 clients during August
- Additional personal support has been provided through 582 outreach visits and 912 phone calls. 549 clients have received personal support through outreach visits and 413 hours of direct client contact has been provided
- Applications for 179 Personal Hardship Assistance Scheme grants and Essential Services Safety Reconnection Scheme Grants (ESSRSG) worth \$285,764 have been approved and paid:
 - 72 Immediate Hardship Assistance grants \$ 25,200
 - 85 Essential Household Content Grants (EHCG) \$105,460
 - 16 Structural Assistance Grants (SAG) \$149,691
 - 6 ESSRSG \$ 5,413.

An additional seven SAG and four ESSRSG applications are currently being processed.

The timeframe available for Immediate Hardship Assistance grants has passed. Applicants have until 30 June 2016 to apply for EHCG, SAG and ESSRSG assistance.

Economic

- DSDIP Regional Services continues to liaise with Mayors and Councils to identify support required to address economic constraints brought about by the impact of the cyclone. To date, no council has specifically requested targeted support.
- Two Category B freight subsidy claims have been received and are being processed by DAFF
- Five Category B concessional loan applications have been received by QRAA. Of these, two applications have been approved for a total of \$470,000 and three applications are under consideration.

Building

- Of 374 State Government assets damaged by the event, 258 have had all repair works completed as at 31 August 2014
- Of 352 social housing residences affected by the event, 230 have had all repair works completed as at 31 August 2014
- All government leased assets in the affected areas have been restored, where impacted, to be fully operational.

Roads and Transport

- Recovery of affected roads (clearing and repairs to reopen roads) was completed by 19 April 2014
- DTMR has commenced works to repair 121.5 kms of State-controlled roads and highways damaged by Cyclone Ita, with 1 km reconstructed in August.
- 2.8 kms of State-controlled rail line which was impacted or damaged by the events has all since been recovered.

(Source: Department of Local Government, Community Recovery and Resilience, 31 August 2014)

**Section five:
Communications**



5.0 Communications

The Authority is focused on building stakeholder confidence in the reconstruction by ensuring consistent and regular communication of public information.

5.1 Communicating progress

Media analysis

There has been a total of 93 media items in August 2014 (63 print – 68%, 17 TV – 18%, 13 radio – 14%), which reached a cumulative audience of over 2.1 million people, with the focus this month being on council recovery and betterment projects.

There were media mentions for regions recovering and rebuilding from natural disasters across Queensland, including articles in the Atherton Tablelander, Bundaberg News Mail, Chinchilla News and Murilla Advertiser, The Courier-Mail, Dalby Herald, Gatton Lockyer Brisbane Valley Star, Gladstone Observer, High Country News, North West News, Queensland Times, South Burnett Times, and the Whitsunday Times; TV coverage on the ABC, WIN and Seven networks throughout the State; and radio mentions, including on ABC Radio Queensland, ZINC FM Townsville and Radio 4KZ Innisfail.

The completion of Western Downs Regional Council’s Operation Road Restore, and North Burnett Regional Council’s completion of \$10 million of betterment projects received coverage on local radio and TV networks (ABC, Seven and WIN), and in regional press with articles featuring in the Bundaberg News Mail, South Burnett Times, Chinchilla News, and the Dalby Herald.

The Betterment Fund received coverage for projects in Moreton Bay, North Burnett, Somerset, South Burnett, and Western Downs with articles appearing in regional media including the North West News, Bundaberg News Mail, Gatton Lockyer Brisbane Valley Star, South Burnett Times, Chinchilla News, and the Dalby Herald.

Engagement activities

In August, **Minister for Local Government, Community Recovery and Resilience David Crisafulli** attended the Royal Exhibition in Brisbane to present the Queensland Resilience Awards to those primary producers struck down by disaster in 2011 and once again in 2013.

Accompanied by **Authority Chief Executive Officer Graeme Newton, Minister Crisafulli** officially opened three Betterment projects in August - North Burnett’s Gayndah Water Intake station and Gayndah-Munduberra Road projects; and the Margate Seawall in Moreton Bay Regional Council.

Minister Crisafulli also visited Councils in Bundaberg, Fraser Coast, Gold Coast, Townsville and Sunshine Coast to see how the reconstruction program has assisted in building resilience across the state.

Communications

There are a number of methods available to the public to communicate with the Authority.

The Authority’s website provides information to the public and continues to be enhanced with ongoing updates, including information about Betterment projects. There has been a large number of visits to the website since it was launched on 18 February 2011. At 31 August 2014, total website visits amounted to 435,349 - an increase of 1.2% since last month. **(See Figure 5.1.1)**

In August, the Authority received an additional 17 calls to its dedicated hotline and 413 additional pieces of written correspondence were received. **(See Figure 5.1.2)**

Fig. 5.1.1 Website traffic

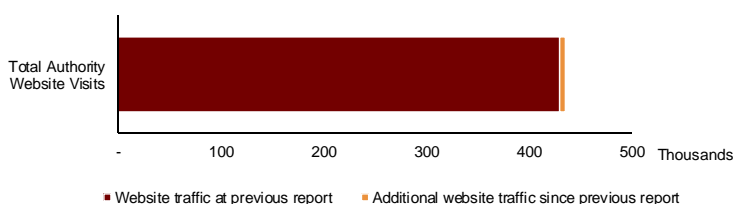
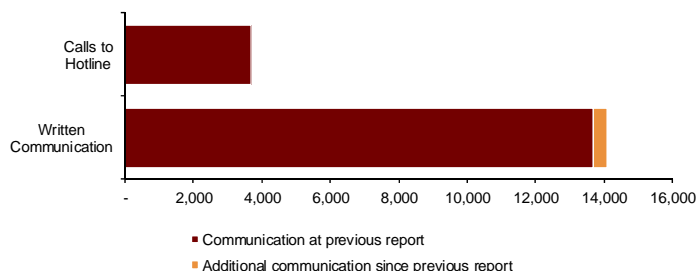


Fig. 5.1.2 Communications



(Source: the Authority at 31 August 2014)

5.2 Media reports

Operation Road Restore completed in record time

Dalby's largest ever roadworks project, dubbed Operation Road Restore, was the equivalent size of a 30-year roadworks program and has been completed under-budget and ahead of schedule.

The project which began in November 2012 had an original completion date of July 2014 to meet funding deadlines provided by the State and Federal Government. This meant that roads on 119 Dalby urban blocks, on 43 roads, affected by the 2010/11 summer floods had to be restored in a year and a half.

By making a number of innovations around how roadworks were managed and conducted, the final resal was laid in April 2014, resulting in this being completed two months ahead of the final delivery date.

Spokesperson for Works and Engineering Services Council for Andrew Smith congratulated Council's dedicated Works Teams for their mammoth achievement in completing and delivering Dalby's first roadworks project of this scale, without comprising quality.

He also thanked the community for their patience and cooperation during this intensive project. All levels of government helped fund Operation Road Restore with a revised overall project value of around \$28 million. Council contributed \$6 million while State and Federal Governments approved a revised \$22 million contribution under the Natural Disaster Relief and Recovery Arrangements (NDRRA).



The final works on the Dalby urban road restoration project, Operation Road Restore, were completed in April ahead of schedule and under-budget.

Dalby Herald, 1 August 2014

North Burnett flood damaged road reopened

NORTH Burnett Regional Council's flood reconstruction works are one step closer to completion with the opening of the Humphrey-Binjour Rd at Binjour.

Following damage caused by flooding in 2010/11 and subsequent flooding caused by ex-tropical Cyclone Oswald in early 2013, significant earthworks were undertaken to

reinstate the range crossing back to its original condition. The cost of the project was about \$2 million, funded under Natural Disaster Relief and Recovery Arrangements.

News Mail, 28 August 2014

\$10m betterment projects officially opened in Gayndah

THE North Burnett region has celebrated the official opening of more than \$10 million in betterment projects with the completion of the Gayndah-Mundubbera Rd and Gayndah Raw Water Intake.

The original infrastructure for the Gayndah Raw Water Intake Project was severely damaged in the 2011 floods and the works were completed just before ex-tropical Cyclone Oswald in early 2013, which then destroyed the new infrastructure.

Community Recovery and Resilience Minister David Crisafulli said the Gayndah water supply intake station on the Burnett River had been moved upstream of the Claude Wharton Weir and made stronger, signalling an end to the madness of replacing damaged infrastructure to the same standard.

"This is a milestone project that will safeguard the facility and the supply of freshwater to the community for generations," he said. Mr Crisafulli said works to the \$4 million pump station included the installation of a

new pipeline to Claude Wharton Weir, the construction of a submersible pump station and a water intake system upstream of the weir.

"There's no doubt it costs more to do this job at a different location, but had the former government been capable of planning properly last time, money would have been saved and the community spared repeated heartache," he said.

Deputy Premier and Member for Callide, Jeff Seeney said the new infrastructure would protect Gayndah's water in any future flood.

"This common-sense investment will reduce the impact of future flood events on the town's water supply, ensuring residents get the water they need at critical times," he said.

Betterment works along the \$6.4 million Gayndah-Mundubbera Rd have also been completed. They included raising the section of road at Riverbend by about 5m.

North Burnett Mayor Don Waugh said the completion of flood restoration works was a big win for the council and

the community. "Every day we are working to improve the lives of residents in the North Burnett, and I thank the entire community for their patience and support throughout the recovery process," he said.

Mr Waugh said the betterment projects replaced vital pieces of infrastructure and improved their efficiency and reliability, even during extreme weather.

“This investment will reduce the impact of future flood events.”

Deputy Premier Jeff Seeney

News Mail, 22 August 2014

Gordonbrook dam repair

Funding flows to bolster spillway



The spillway upgrade was completed in 1967, when the dam and spillway were raised, increasing the volume of flood magnitude.

The velocity of the water damaged the natural bedrock underpinning the northern side of the dam, causing fragments to break off, weakening the spillway's integrity. Funding for the restoration project to cover the damaged bedrock was announced on Friday. The project will have a maximum cost of \$4.5 million, with \$1.7 million coming from the Federal Government's Natural Disaster Relief Recovery Fund.

South Burnett Regional Council will contribute \$300,000, with the state government and 20% local government. The spillway could give out if it faced another flood event as extreme as the 2011.

- \$1.7 million from the Nat. and Disaster Relief Recovery Fund
- \$300,000 Queensland Government Fund, 20% state government and 20% local government
- \$800,000 South Burnett Regional Council

EVERTON HILLS

Brook bridge now open

STRUCTURE REPLACES CAUSEWAY DAMAGED IN 2012 FLOODS

Jerja Orwell

MARA Court pedestrian bridge at Everton Hills, which replaced the causeway crossing washed away in 2012, is open to foot traffic. Marston Bay Regional Council Mayor Allan Sutherland said the \$700,000 footbridge had been made possible with nearly \$500,000 in National Disaster Relief and Betterment Funding.

"The contribution of the State and Federal governments has enabled council to design and build a fully flogged, elevated bridge over Kadron Brook to replace the low-level causeway crossing," Cr Sutherland said.

"It's a strong, 30m steel and concrete structure that's expected to be more resilient to future flood events and save on post-flood repair costs for ratepayers in the longer term."

The new footbridge includes a 30m ramp connecting Clavaria St and Cyril Ave and is wider than the 25-year-old causeway crossing it replaced. Marston Bay Regional Council Division 14 Councilor Brian Batterbury said for Everton Hills residents, the new footbridge restored a direct and convenient link to Clavaria Park train station and other local services.

"In many ways it reunites our communities and that in itself makes the Mara Court pedestrian bridge a worthy while investment," Cr Batterbury said.

Everton state LNP MP Tim Mander said it highlighted the Queensland Government's commitment to funding natural disaster projects with built-in resilience.

"It's a false economy to continue to simply rebuild costly public infrastructure that's washed away or extensively damaged in the next flood event," he said.

"That's why state and federal betterment funding has helped council to replace the Kadron Brook causeway with a lasting structure that's better suited to its environment and that's a great result for our community."

The causeway was washed away in 2012 after being damaged during the 2011 floods.

Email your thoughts to jerja.ornwell@mp.com.au

North West News, 20 August 2014

SPILLWAY UPGRADE

Works flood-proof water supply

KINGAROOY residents will have a more secure water supply with the announcement of \$700,000 in funding to upgrade the Gordonbrook Dam spillway.

Deputy Premier and State Development, Infrastructure and Planning Minister, Jeff Seeney said the investment from the joint Queensland and Federal Government Betterment Fund would make the vital piece of community

infrastructure more resistant to future flooding.

"We are pleased to work in partnership with the South Burnett Regional Council to boost the resilience and flood immunity of the spillway to ensure it can better withstand future natural disasters," Mr Seeney said.

"Council plans to raise the height of the existing wall to provide erosion protection during major weather events."

South Burnett Times, 29 August 2014

Flood works begin

SHERELE MOODY Roads

FLOOD restoration works will close a Mt Larcom road for two weeks.

A section of East End Rd will be closed to all traffic until September 8. The closure began on Monday.

The Gladstone Regional Council is repairing a 50-metre swathe of the road which was damaged during floods in 2012 and last year.

East End Rd motorists headed for the Bruce Hwy will need to use Mt Alma Rd

and Kaluda Rd or Mt Larcom-Bracewell Rd as alternatives. The works will involve replacement of the existing concrete roadway deck.

Mayor Gail Sellers said the project was part of Natural Disaster Relief and Recovery Arrangements Stage Two flood restoration works.

"Motorists are advised to plan their travel during this period and consider allowances for any extra time," Cr Sellers said.

Gladstone Observer, 30 August 2014

sherele.moody@gladstoneobserver.com.au

Short road to restoration

By WILL HUNTER

IT WAS 30 years of roadworks condensed into 18 months.

Operation Road Restore reached its official conclusion this week after \$28 million of work on 43 roads and 119 urban blocks. Western Downs Regional Council Mayor Ray Brown said the local councils had not spent a comparable amount of money on local roads in 30 years.

"They did it in that short amount of time... that's a good outcome," Cr Brown said.

Member for Maranoa Bruce Scott inspected the new roads at the project's official opening on Monday.

The council finished the work under budget and two months ahead of schedule. Majority of Operation Road Restore was funded

under the Natural Disaster Relief and Recovery Arrangements, with the State and Federal Governments contributing \$22 million.

The WDRRC, which was required to finish the work in 18 months due to NDRRA requirements, chipped in \$6 million.

Works and engineering services spokesman councillor Andrew Smith said the State and Federal Governments' contribution would be closer to

\$19 million due to savings in the project budget. Some local streets have also been lowered to assist in flood mitigation.

"They are not the saviour," Cr Brown said.

Cr Smith said the council had built a strong asset for Dalby's future.

"Roads reconstructed under Operation Road Restore will be stronger and last longer, giving the community a durable, long-term asset," he said.

For a full list of the local roads repaired, head to www.wdrd.qld.gov.au/roadworks.

Dalby Herald, 1 August 2014

A million-dollar bridge to withstand any flood

CONSTRUCTION has started on a new pedestrian bridge at Toogoolawah.

A \$1 million bridge measuring about 54 metres in length will replace a dilapidated structure damaged by floods.

The new bridge will be built slightly upstream from the current bridge over Cressbrook Creek which runs adjacent to the Brisbane Valley Highway on the southern approach to Toogoolawah.

References to the town's former Nestle Condensery Milk Factory, located nearby, have been incorporated into the bridge design.

The new bridge is expected to be finished before the end of the year and will cater for pedestrians, cyclists and horses.

The new bridge will also have higher flood immunity. Somerset Regional Council Mayor Graeme Lehmann said the new bridge would last at least a

hundred years. "The balustrade rail that will be used on the bridge is designed to collapse under flood loads and can easily be re-stood after flood waters recede," Cr Lehmann said.

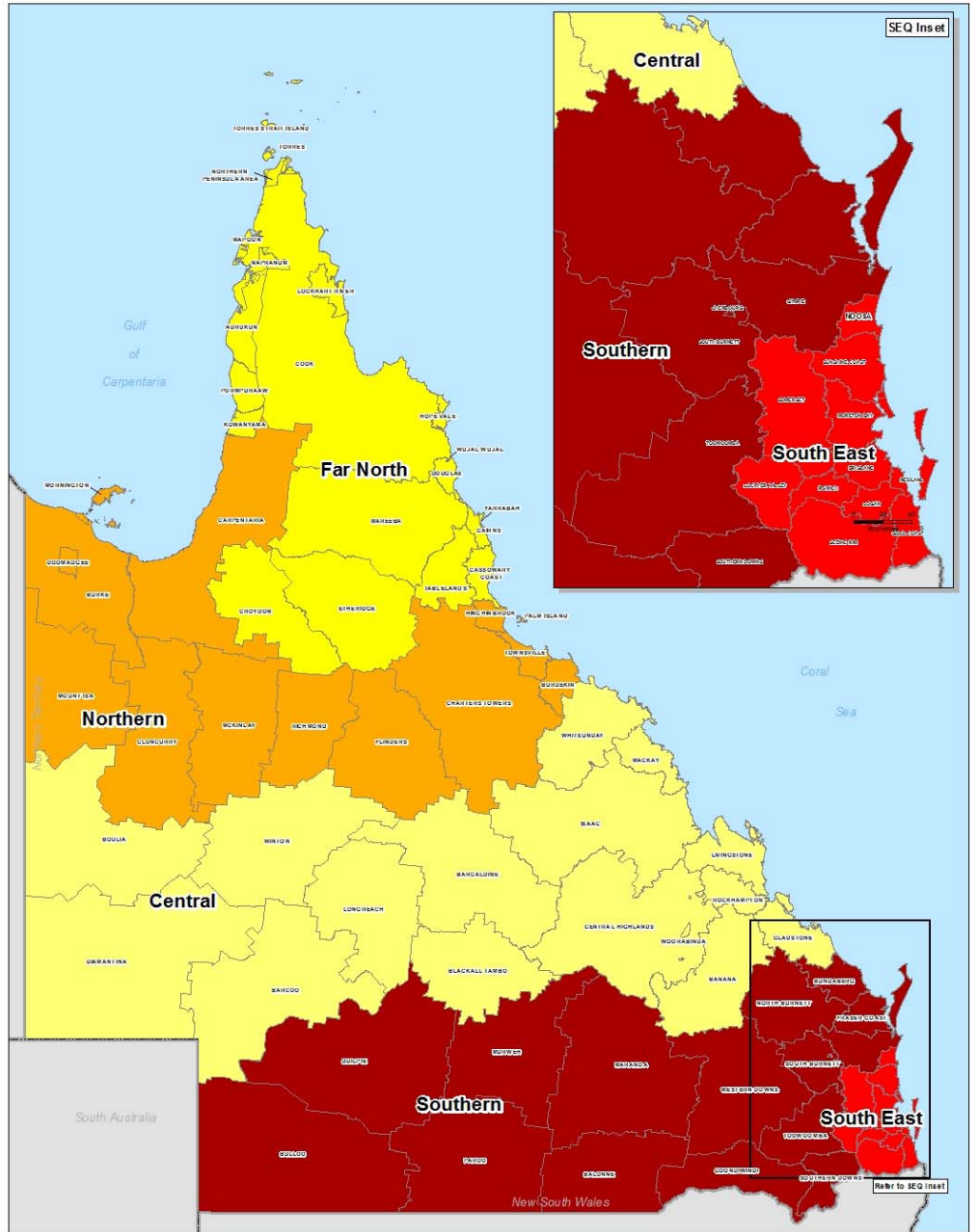
The bridge is being funded predominantly by the Queensland Reconstruction Authority through state and federal funds.

Council will contribute about \$200,000 to the project.

Appendices

Appendix A: Local Government Areas by Region

Region	Local Government Areas (LGA's)	
Far North Queensland (FNQ)	ASC Aurukun Shire Council	
	CRC Cairns Regional Council	
	CCRC Cassowary Coast Regional Council	
	CoSC Cook Shire Council	
	CfSC Croydon Shire Council	
	DSC Douglas Shire Council	
	ESC Etheridge Shire Council	
	HVASC Hope Vale Aboriginal Shire Council	
	KASC Kowanyama Aboriginal Shire Council	
	LRASC Lockhart River Aboriginal Shire Council	
	MASC Mapoon Aboriginal Shire Council	
	MbaSC Mareeba Shire Council	
	NASC Napranum Aboriginal Shire Council	
	NPARC Northern Peninsula Area Regional Council	
	PASC Pormpuraaw Aboriginal Shire Council	
	TRC Tablelands Regional Council	
	TSC Torres Shire Council	
	TSIRC Torres Strait Island Regional Council	
	WWASC Wujal Wujal Aboriginal Shire Council	
	YASC Yarrabah Aboriginal Shire Council	
North Queensland (NQ)	BrdSC Burdekin Shire Council	
	BrkSC Burke Shire Council	
	CSC Carpentaria Shire Council	
	CTRC Charters Towers Regional Council	
	CISC Cloncurry Shire Council	
	DASC Doomadgee Aboriginal Shire Council	
	FSC Flinders Shire Council	
	HSC Hinchinbrook Shire Council	
	McSC McKinlay Shire Council	
	MoSC Mornington Shire Council	
	MICC Mount Isa City Council	
	PIASC Palm Island Aboriginal Shire Council	
	RSC Richmond Shire Council	
	TCC Townsville City Council	
	Central Queensland (CQ)	BanSC Banana Shire Council
		BarRC Barcaldine Regional Council
		BarSC Barcoo Shire Council
BTRC Blackall-Tambo Regional Council		
BOSC Boulia Shire Council		
CHRC Central Highlands Regional Council		
DSC Diamantina Shire Council		
GSC Gladstone Regional Council		
IRC Isaac Regional Council		
LSC Livingstone Shire Council		
LRC Longreach Regional Council		
MacRC Mackay Regional Council		
RRC Rockhampton Regional Council		
WRC Whitsunday Regional Council		
WSC Winton Shire Council		
WASC Woorabinda Aboriginal Shire Council		
Southern Queensland (SQ)		BaSC Balonne Shire Council
	BSC Bulloo Shire Council	
	BRC Bundaberg Regional Council	
	CASC Cherbourg Aboriginal Shire Council	
	FCRC Fraser Coast Regional Council	
	GoRC Goondiwindi Regional Council	
	GRC Gympie Regional Council	
	MarRC Maranoa Regional Council	
	MuSC Murweh Shire Council	
	NBRC North Burnett Regional Council	
	PSC Paroo Shire Council	
	QSC Quilpie Shire Council	
	SBRC South Burnett Regional Council	
	SDRC Southern Downs Regional Council	
	ToRC Toowoomba Regional Council	
WDRC Western Downs Regional Council		
South East Queensland (SEQ)	BCC Brisbane City Council	
	GCCC Gold Coast City Council	
	ICC Ipswich City Council	
	LVRC Lockyer Valley Regional Council	
	LCC Logan City Council	
	MBRC Moreton Bay Regional Council	
	NSC Noosa Shire Council	
	RCC Redland City Council	
SRRC Scenic Rim Regional Council		
SRC Somerset Regional Council		
SCRC Sunshine Coast Regional Council		



Local Government Areas and QldRA Reporting Regions
Scale at A4: 1:6,700,000

Legend

- Far North Queensland
- North Queensland
- Central Queensland
- Southern Queensland
- South East Queensland
- Local Government Areas

As at 5/02/2014

© P. Hoyle 2009. 2014 Queensland Reconstruction Authority. All Rights Reserved. 2014.101

