

**QUEENSLAND RECONSTRUCTION AUTHORITY**

# Monthly Report

**May 2014**

## **Document details:**

Security classification	Public
Date of review of security classification	May 2014
Authority	Queensland Reconstruction Authority
Author	Chief Executive Officer
Document status	Final
Version	1.0

## **Contact for Enquiries:**

*All enquiries regarding this document should be directed to:*

*Queensland Reconstruction Authority*

*Phone the call centre - **1800 110 841***

## **Mailing Address**

Queensland Reconstruction Authority

PO Box 15428

City East Q 4002

*Alternatively, contact the Queensland Reconstruction Authority by emailing [info@qldra.org.au](mailto:info@qldra.org.au)*

## **Licence**

*This material is licensed under a [Creative Commons - Attribution 3.0 Australia licence](#).*



*The Queensland Reconstruction Authority requests attribution in the following manner:*

© The State of Queensland (Queensland Reconstruction Authority) 2011-2014

## **Information security**

*This document has been classified using the [Queensland Government Information Security Classification Framework \(QGISCF\)](#) as PUBLIC and will be managed according to the requirements of the QGISCF.*

---

*Message from the Chief Executive Officer*

Major General Richard Wilson AO  
Chairman  
Queensland Reconstruction Authority

Dear Major General Wilson

It is with pleasure that I present the May 2014 Monthly Report – the 39th report to the Board of the Queensland Reconstruction Authority (the Authority).

The Authority was established under the *Queensland Reconstruction Authority Act 2011* following the unprecedented natural disasters which struck Queensland over the summer months of 2010-11. The Authority is charged with managing and coordinating the Government's program of infrastructure renewal and recovery within disaster-affected communities, with a focus on working with our State and local government partners to deliver best practice expenditure of public reconstruction funds. Following the widespread damage caused by ex-Tropical Cyclone Oswald in early 2013, the jurisdiction of the Authority was expanded by the *Queensland Reconstruction Authority Amendment Bill 2013* to cover this and other 2013 disaster events.

The May report is provided following the end of the annual disaster season but also as the State recovers from the 'late season' impact of Tropical Cyclone Ita. The Authority is currently assisting councils and state agencies affected by the event with the recovery effort, most notably with advice and assistance to capture data for infrastructure damage assessments. An overview of Tropical Cyclone Ita is provided in the report. The Authority is also actively assisting delivery agents to progress their remaining program of works from the massive 2011 and 2012 disaster events which devastated the State as the 30 June 2014 deadline approaches for delivery of NDRRA eligible works for much of these works.

As was noted in last month's report, the Authority's regular estimates review process at February 2014 was practically complete when Tropical Cyclone Ita hit and preliminary program estimates were provided in the report pending assessment of the impact of this most recent event. Following initial assessment of the damage from the event and its impact on the remaining program during the month, the February 2014 estimated program of works for all events actively managed by the Authority (2009 to 2014) inclusive of initial estimates for Tropical Cyclone Ita has been updated to \$13.84 billion.

On this basis, the May report provides an update on the progress of the program of works managed by the Authority based on the updated February 2014 review of damage estimates.

As at 5 May 2014:

- an additional \$217 million in submissions have been received by the Authority since last month
- an additional \$660 million has been processed by the Authority since last month
- a cumulative value of \$11.13 billion of the \$13.84 billion works program (2009 to 2014) has been reported to the Authority as being in progress or delivered by delivery agents as at 31 March 2014.

The May report also provides an update on the progress of a number of key reconstruction projects, including awarding of the tender for reconstruction of seven ferry terminals damaged in the 2011 flood event, the final component of a \$145 million Category D package for Brisbane City Council. In addition, the report tracks the construction progress of the other component of this Category D project, Brisbane Riverwalk, as well as two betterment projects, Bongaree Seawall (Moreton Bay Regional Council) and Gayndah Water Supply Intake Station (North Burnett Regional Council). With its deadline for delivery of works approaching, the May report also profiles the near completion of Gladstone Regional Council's 2011 event program and reports on how the day labour initiative has delivered savings to Charters Towers Regional Council's reconstruction works.

I commend the report to you and recommend its release to the Minister and the public pursuant to Section 41 of the *Queensland Reconstruction Authority Act 2011*.

Yours sincerely



Graeme Newton  
Chief Executive Officer  
Queensland Reconstruction Authority

# Contents

<b>1.0 Introduction</b>	<b>1</b>
1.1 Background	2
1.2 Purpose	2
1.3 Timing	2
<b>2.0 Disaster Assistance</b>	<b>3</b>
2.1 Queensland Disaster Assistance Framework	4
2.2 Disaster assistance by event period	5
2.3 Events managed by the Authority	6
2.4 Additional assistance measures	7
2.4.1 Betterment fund	7
2.4.2 Other assistance measures	7
<b>3.0 Program Status</b>	<b>8</b>
3.1 Recent developments	9
3.2 Combined program status	9
3.3 Looking forward	9
3.4 State-wide pipeline of works	10
3.5 Program of works expenditure	11
3.6 State-controlled roads and highways	14
3.7 Betterment fund status	15
<b>4.0 Progress Reports</b>	<b>16</b>
4.1 Iconic projects in reconstructing Queensland	17
4.2 Program spotlights	20
<b>5.0 Communications</b>	<b>23</b>
5.1 Communicating progress	24
5.2 Media reports	25
<b><u>Appendices</u></b>	
Appendix A: Local Government Areas by Region	27

**Section one:**  
**Introduction**



# 1.0 Introduction

## 1.1 Background

Queensland has been struck by a series of unprecedented natural disasters in recent years. Between November 2010 and April 2011, extensive flooding caused by periods of extremely heavy rainfall, destruction caused by a number of storm cells including Cyclones Tasha, Anthony and Severe Tropical Cyclone Yasi and subsequent monsoonal flooding, resulted in all of Queensland being declared as disaster affected.

On 21 February 2011 in response to the 2011 disaster events, the Queensland Government established the Queensland Reconstruction Authority (the Authority) under the *Queensland Reconstruction Act 2011*. The Authority's role was subsequently extended to cover historical and continuing disaster events in Queensland.

The Authority has since been given responsibility to administer Natural Disaster Relief and Recovery Arrangements (NDRRA) for the large scale natural disaster caused by Tropical Cyclone Oswald in late January 2013 and additional events which have occurred in the 2013 and 2014 disaster event periods. The *Queensland Reconstruction Authority Amendment Bill 2013* was passed on 14 February 2013 to expand the jurisdiction of the Authority to include the 2013 events.

## 1.2 Purpose

The Authority's mission is **to reconnect, rebuild and improve Queensland communities and its economy**.

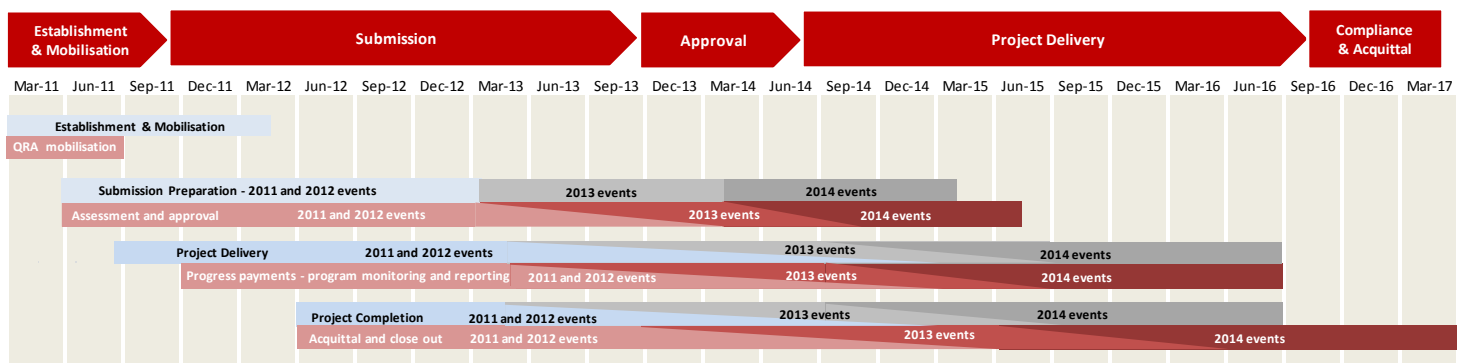
The Authority is charged with managing and coordinating the Government's program of infrastructure renewal and recovery within disaster-affected communities, with a focus on working with our State and local government partners to deliver best practice expenditure of public reconstruction funds.

The Authority operates with reference to recovery and reconstruction plans established by the State in response to the 2011 disaster events and more recently following Tropical Cyclone Oswald. The Queensland 2013 Flood Recovery Plan (Recovery Plan), approved on 25 February 2013, provides strategic guidance for the coordination and management of recovery, reconstruction and community resilience activities undertaken across the State after Tropical Cyclone Oswald.

## 1.3 Timing

The Authority's priorities are currently assisting councils and State agencies to progress their remaining program of works from the 2011 and 2012 disaster periods, with the bulk of the reconstruction work occurring prior to June 2014. The Authority is also assisting with the damage assessments from the 2014 events and acceleration of the 2013 and 2014 programs of works into project delivery phase as soon as practicable.

With the period to deliver works for the 2010 disaster period now complete (at 30 June 2013), the Authority is closing out the balance of the program of works for the 2010 event and later events which have reached completion.



**Section two:**  
**Disaster Assistance**

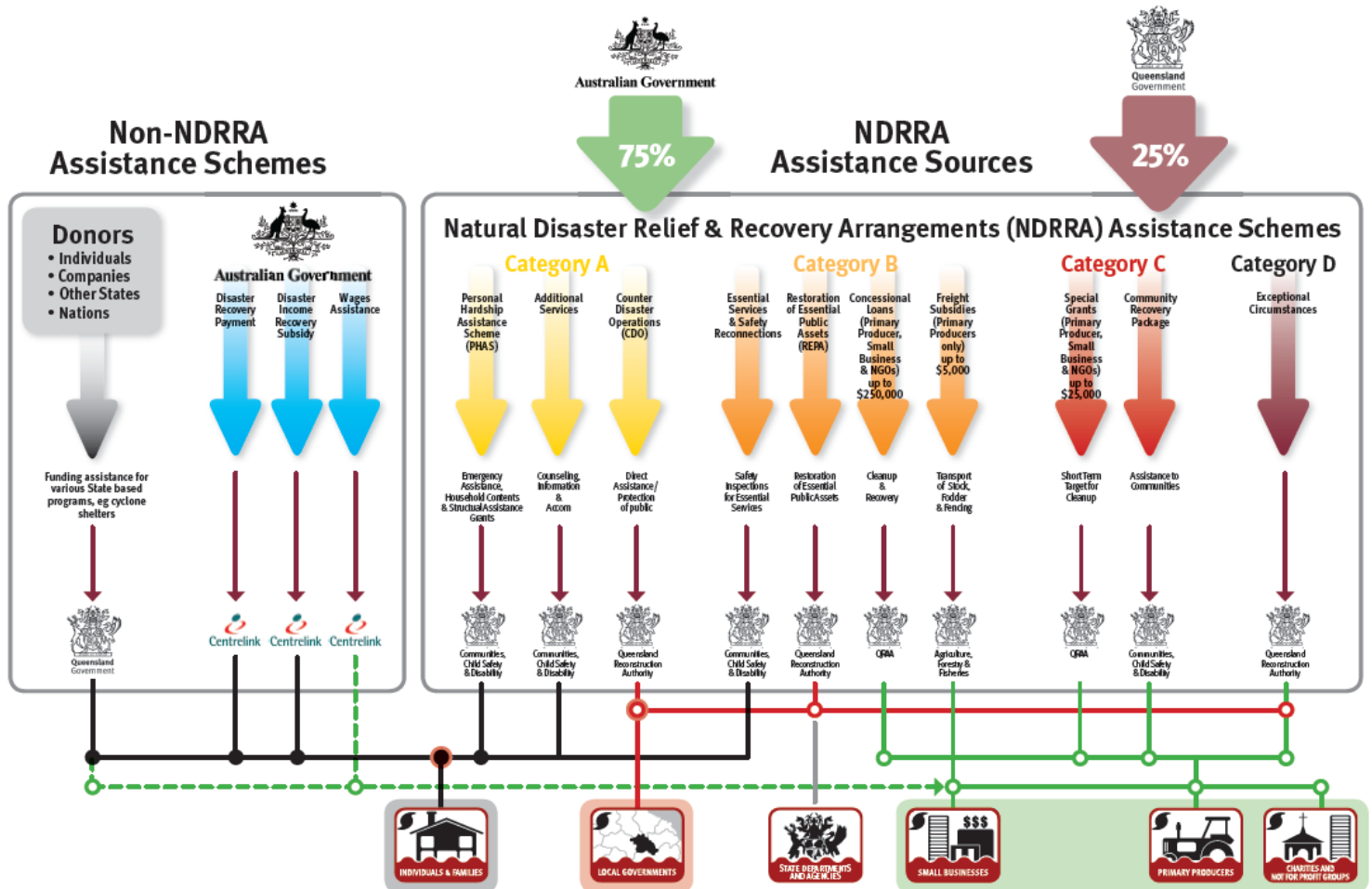


## 2.0 Disaster Assistance

### 2.1 Queensland Disaster Assistance Framework

The available Queensland Disaster Assistance schemes are separated between NDRRA (jointly funded by the Commonwealth and State governments) and Non-NDRRA funding schemes. The diagram below indicates the different elements of assistance available and how each element operates.

Figure 2.1.1 Queensland Disaster Assistance Framework



Whilst elements of the assistance schemes are delivered by other State agencies, all of the NDRRA assistance sources (and elements of the non-NDRRA assistance schemes) are administered by the Authority for historical and continuing disaster events in Queensland.

#### Disaster events managed by the Authority

The list of the activated disaster events managed by the Authority are set out in **Section 2.3** and can also be found on [www.disaster.qld.gov.au](http://www.disaster.qld.gov.au).

The maps opposite show the LGAs activated for relief measures under NDRRA for each event period under the Queensland Disaster Assistance Framework.

This report includes references to event periods described as follows:

- **2014 events:** Activated disaster events managed by the Authority which occurred in the financial year ended **30 June 2014**
- **2013 events:** Activated disaster events managed by the Authority which occurred in the financial year ended **30 June 2013**, including Tropical Cyclone Oswald and associated rainfall and flooding (January 2013)
- **2012 events:** Activated disaster events managed by the Authority which occurred in the financial year ended **30 June 2012**
- **2011 events:** Activated disaster events managed by the Authority which occurred in the financial year ended **30 June 2011**, including Tropical Cyclone Yasi and Queensland flooding (November 2010 to February 2011)
- **2009-2010 events:** Activated disaster events managed by the Authority which occurred prior to 30 June 2010
- **Combined Program:** relates to all the activated disaster event programs managed by the Authority.

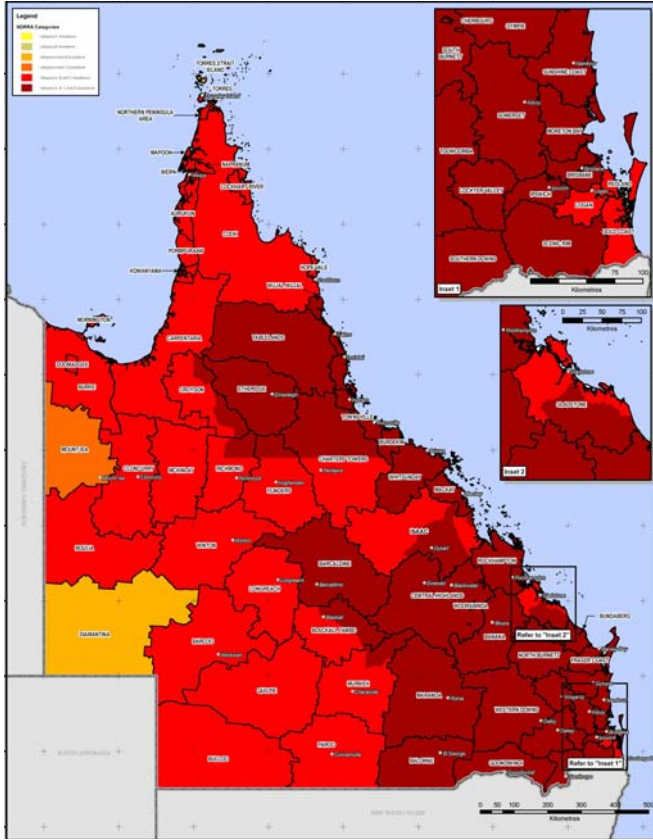


## 2.0 Disaster Assistance

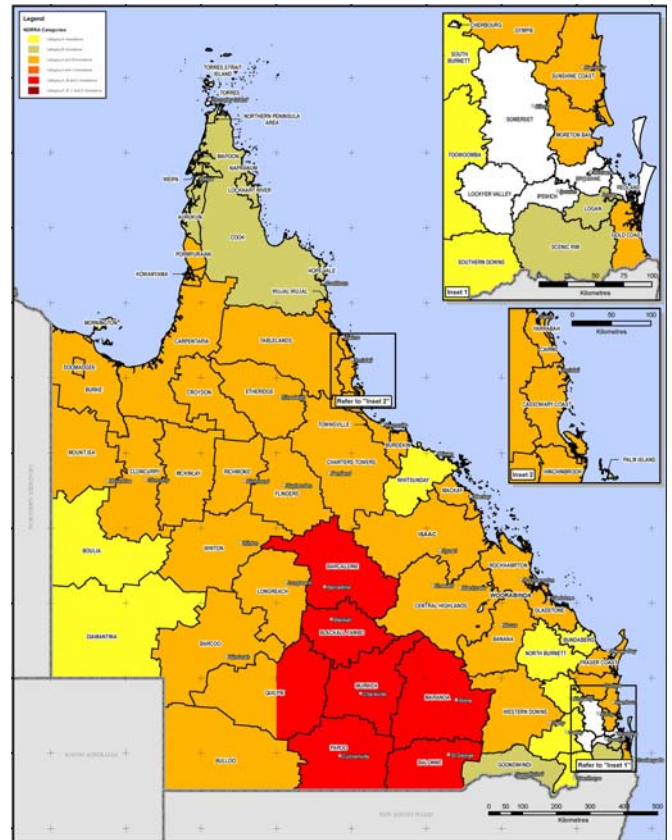
### 2.2 Disaster assistance by event period

The maps below show the LGAs activated for relief measures under NDRRA for each event period managed by the Authority under the Queensland Disaster Assistance Framework.

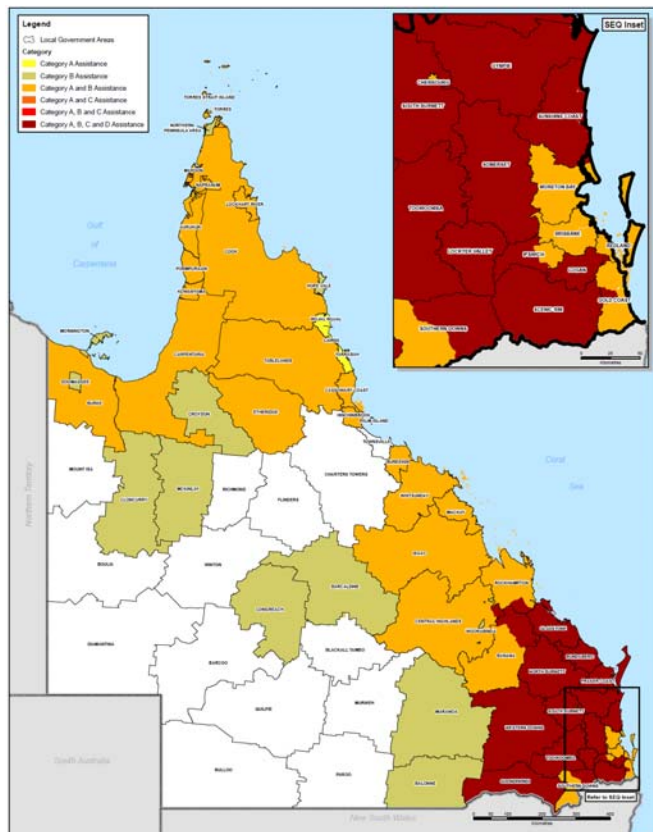
Map 1 - LGAs disaster activated under NDRRA for 2011 events



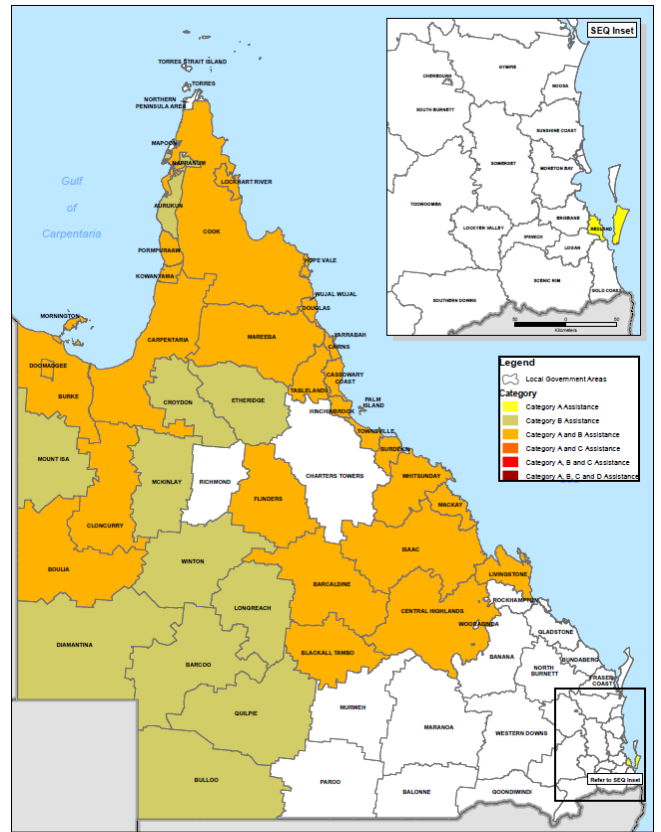
Map 2 - LGAs disaster activated under NDRRA for 2012 events



Map 3 - LGAs disaster activated under NDRRA for 2013 events



Map 4 - LGAs disaster activated under NDRRA for 2014 events



## 2.3 Events managed by the Authority

The Authority has responsibility to administer NDRRA relief measures for historical and continuing disaster events in Queensland. The Authority currently manages and coordinates the infrastructure reconstruction and recovery for 24 disaster events activated for NDRRA relief measures since the Authority's establishment in February 2011 and the remaining program of works for an additional 16 disaster events which occurred prior to the Authority's establishment.

During April, there has been a new activation for NDRRA financial assistance for *Tropical Cyclone Ita and Associated Rainfall and Flooding, 11 - 14 April 2014*.

### 2014 events:

- Tropical Cyclone Ita and Associated Rainfall and Flooding, 11 - 14 April 2014
- Central and Western Queensland Flooding & Rainfall, 18 - 28 February 2014
- North East Queensland Monsoonal Rainfall and Flooding - 7 to 9 February 2014
- Tropical Cyclone Fletcher, commencing 2 February 2014
- Tropical Cyclone Dylan, 31 January 2014
- North Stradbroke Island Fires, commencing 29 December 2013

### 2013 events:

- South West Queensland Wildfires, 21 December 2012
- Far Northern Queensland Bushfires, late October - December 2012
- Tropical Cyclone Oswald and Associated Rainfall and Flooding, 21-29 January 2013 \*
- Longreach Flood, 18 February 2013 #
- Central and Southern Queensland Low, 25 February - 5 March 2013 #

### 2012 events:

- Queensland Bushfires, August to October 2011
- Localised Heavy Rainfall Northern Queensland, October 2011 \*
- Southern Queensland Flooding, November to December 2011\*
- South East Queensland Heavy Rainfall and flooding, 23- 26 January 2012 \*
- Western Queensland Tropical Low, 27 January to February 2012 \*
- Far Northern Queensland Tropical Low, 3-4 February 2012 \*
- North Coast Queensland Storms and flooding and East Coast Hybrid Low, 24 February - 7 March 2012 \*
- Northern and Far Northern Queensland Heavy Rainfall & flooding, 15 March 2012 \*
- East Coast Low, 22 March 2012 \*

### 2011 events:

- Queensland Flooding and Tropical Cyclones Tasha and Anthony, November 2010 to February 2011\*
- Severe Tropical Cyclone Yasi on 2 February 2011\*
- Queensland Monsoonal Flooding Event, 8 February 2011\*
- South West Flooding, April 2011\*

### 2007-2010 natural disaster events managed by the Authority that have open submissions for damage:

- South East and North Coast Queensland East Coast Low, August 2007
- South West Queensland storms and flooding, 23-30 November 2007
- Central Western Queensland storms and flooding, 22-30 December 2007
- South East Queensland East Coast Low, 27 December 2007 - 7 January 2008
- Queensland Monsoonal flooding, January 2008
- Queensland Monsoonal flooding, February March 2008
- South West Queensland flooding, June 2008
- Queensland storms and associated flooding, 16-22 November 2008
- Queensland Monsoonal flooding and Tropical Cyclone Charlotte and Ellie, January - February 2009
- South East Queensland Low, May 2009
- Queensland Bushfires, September - October 2009
- South West Flooding, 20 - 25 November 2009
- Northern, Central and South West Queensland Flooding, 22 December 2009 to 8 January 2010
- Queensland Monsoonal Flooding and Tropical Cyclones Olga, Neville, Ului and Paul, January to April 2010
- South West Queensland Low and Associated Flooding, September 2010
- 2010 South East Queensland Flooding, 9-12 October 2010.

The maps opposite show the LGAs activated for relief measures under NDRRA for each event period managed by the Authority under the Queensland Disaster Assistance Framework.

\* Events covered under the National Partnership Agreement for Natural Disaster Recovery and Reconstruction (NPA) between the State and Commonwealth Government signed 8 February 2013 (NPA Events).

# Pending agreement to extend the NPA to include two additional 2013 events - Longreach Floods, 18 February 2013 and Central and Southern Queensland Low, 25 February - 5 March 2013.

## 2.4 Additional assistance measures

The State Government in conjunction with the Commonwealth have activated a range of jointly-funded Category C, Category D and other relief measures to alleviate distress due to the impact of Tropical Cyclone Oswald and the 2011 events. The measures are summarised below:

### 2.4.1 Betterment fund

On 8 February 2013, the Queensland Government signed the National Partnership Agreement (NPA) with the Commonwealth Government which recognised the need for a more streamlined process for the approval of Betterment funding. The Queensland Government announced a \$40 million commitment to Betterment funding which will match the Commonwealth Government contribution, resulting in the establishment of the \$80 million Betterment Fund.

In August 2013, the Betterment fund was extended beyond its original coverage of LGAs declared for NDRRA assistance for Tropical Cyclone Oswald to also cover LGAs declared for the two additional disaster events that occurred through to June 2013 (Longreach Flood (18 February 2013) and Central and Southern Queensland Low (25 February to 5 March 2013)). The Betterment fund is available for the restoration or replacement of essential public assets to a more disaster resilient standard than their pre-disaster standard. The intent of betterment is to increase the resilience of communities to natural disasters, while at the same time reducing future expenditure on asset restoration, reducing incidents, injuries and fatalities and improving asset utility during and after disaster events.

Where a damaged asset is approved as a betterment project, the normal cost of restoring or replacing the asset to its pre-disaster standard will continue to be funded under Category B of NDRRA assistance and the incremental cost to 'better' the asset to a more disaster-resilient standard will be financed from the Betterment fund. The status of the Betterment fund is set out in Section 3.7 of this report.

### 2.4.2 Other assistance measures

#### Tropical Cyclone Oswald

- **Community Recovery Package - \$5 million** - Funding for community development officers in the hardest hit communities of Bundaberg and North Burnett, support for mental health services and a flexible fund that assists communities to implement engagement and development activities.
- **Clean Up and Recovery program - \$10 million** - Program to assist primary producers to clear debris and restore fencing in the worst affected areas; to maintain workers while income generating activities are reduced and to clear debris from watercourse that poses a hazard to downstream infrastructure and activities.
- **Industry Recovery Officers - \$1.5 million** - Placement of Industry Recovery Officers to assist business and primary producers recover from flooding.
- **Enhanced concessional loans and grants** - Loans of up to \$650,000 (with a grant component of up to \$50,000) are available to applicants that have suffered extreme damage such that the existing concessional loan and recovery grants under NDRRA category B and C are insufficient to support recovery.
- **Environmental Recovery program - \$10 million\*** - Program to fund existing programs to conduct flood specific clean up and soil conservation work following the 2013 flooding.
- **Rural Financial Counselling Services - \$1.5 million\*** - Provision of financial planning advice for rural businesses and primary producers to assist in the recovery of local economies following the disaster.
- **Other measures - \$4.9 million** to fund dredging works to restore Bundaberg Port to its pre-2013 flood clearance depths; and **\$900,000** to assist Bundaberg Regional Council meet the cost of recovery works for community parks and gardens.

#### 2011 events

- **Queensland Local Council Package - \$315 million** - Funding to help local councils repair utilities and infrastructure, and support their efforts in recovering from the floods and Cyclone Yasi. The package comprises two components: \$265 million to fast-track the repair of damaged infrastructure, including the Strengthening Grantham project, Brisbane ferry terminals and Riverwalk; and \$50 million to contribute to regional and remote councils employing people to perform important clean-up and repair work.
- **Cassowary Coast Support Package - \$15 million** - Funding to restore vital council infrastructure and restore natural vegetation and beach damage in the Cassowary Coast region. Specifically, the Support Package provides for the repair of Dunk Island Jetty, the repair of Clump Point Jetty and the restoration of Cardwell beach foreshore and its natural vegetation.
- **Exceptional Disaster Assistance Scheme** - Concessional interest loans of up to \$650,000, with grant component of up to \$50,000, to eligible businesses, primary producers and not-for-profit organisations that suffered extreme damage.

In addition, the State Government and Commonwealth have agreed to an extended Day Labour Trial, which enables councils to deliver restoration works with their own workforce on condition that they provide evidence of savings in both time and cost.

\* Non-NDRRA measures funded 50% by the State and 50% by the Commonwealth; Commonwealth share is being delivered directly through existing Commonwealth programs.

**Section three:**

# **Program Status**



## 3.0 Program Status

### 3.1 Recent developments

Following the *Tropical Cyclone Ita and Associated Rainfall and Flooding, 11 - 14 April 2014* event, the Authority is assisting affected Councils with their recovery efforts providing advice, support and assistance to affected councils and state agencies, as well as capturing data for damage assessments. Assessment of the impact of the cyclone on the remaining program of works across the Far North and North Queensland region is ongoing although initial estimates have been reflected in this month's report - refer Section 3.2 below.

The Authority is also currently progressing the close out of the balance of works from the 2010 event period and completed works from later event years for acquittal to the Commonwealth.

### 3.2 Combined program status

Taking into account initial estimates of the damage from Tropical Cyclone Ita and its impact on the remaining program, the preliminary February 2014 estimate of the program of works which was presented in the April 2014 report has been updated to \$13.84 billion for all events actively managed by the Authority (2009 to 2014).

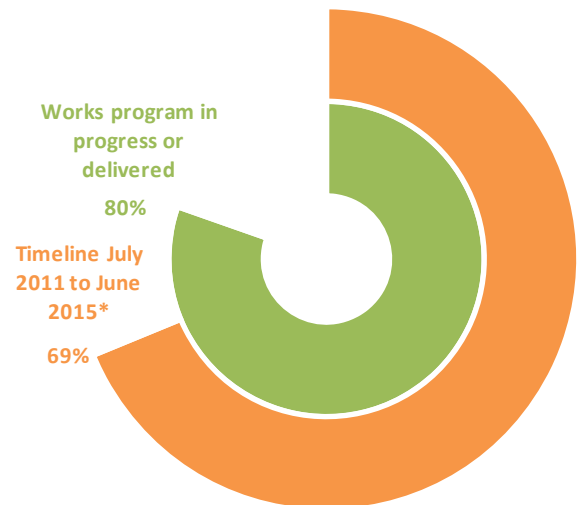
The updated program estimate includes initial estimates for Tropical Cyclone Ita and the five other 2014 events which occurred since the previous review was undertaken at September 2013, as well as revised estimates for completion of the remaining 2011 to 2013 event works.

Inclusive of Tropical Cyclone Ita, the preliminary cost of the damage from the 2014 events is estimated to be \$440 million, the damage from the 2013 events is estimated to be \$2.35 billion and the cost of the 2011 and 2012 events are estimated to be \$6.84 billion and \$1.70 billion respectively. Ahead of final acquittal of the relevant programs, the final cost of works for the 2009 and 2010 events managed by the Authority is estimated to be \$2.51 billion.

Since the last report, the combined program of works for all events managed by the Authority has progressed as follows:

- a cumulative value of \$16.9 billion in submissions have been received by the Authority to 5 May 2014, representing an increase of \$217 million since last month
- a cumulative total of \$15.7 billion has been processed by the Authority to 5 May 2014, representing an increase of \$660 million since last month
- a cumulative value of \$11.13 billion of the updated February 2014 estimated \$13.84 billion works program (2009 to 2014) has been reported to the Authority as being in progress or delivered by delivery agents as at 31 March 2014.

**Figure 3.2.1 Combined program progress**



### 3.3 Looking forward

The Authority is currently focused on actively assisting affected Councils with their recovery efforts and initial assessments of damage following Tropical Cyclone Ita.

The Authority is also focused on both closing out the balance of 2010 events and other works completed in the 2012/13 financial year for acquittal to the Commonwealth, and actively assisting councils and State agencies to progress their remaining program of works.

The deadline of 30 June 2014 is approaching for delivery agents to incur NDRRA-eligible expenditure on the bulk of works arising from the events of 2011 and 2012 and the Authority is assisting delivery agents complete their remaining program of works from these significant event years. Concurrently, the Authority is assisting the collection of data and acceleration of the 2013 and 2014 programs of works through project delivery phase as soon as practicable.

\* Proportion of allowable time passed for delivery of 2010 to 2013 program to data reporting date of 28 February 2014 since 1 July 2011 (following the Authority's establishment) based on final delivery date of 30 June 2015 for 2013 program. 2014 program will have additional 12 months to 30 June 2016 for completion of eligible works beyond reported timeline.

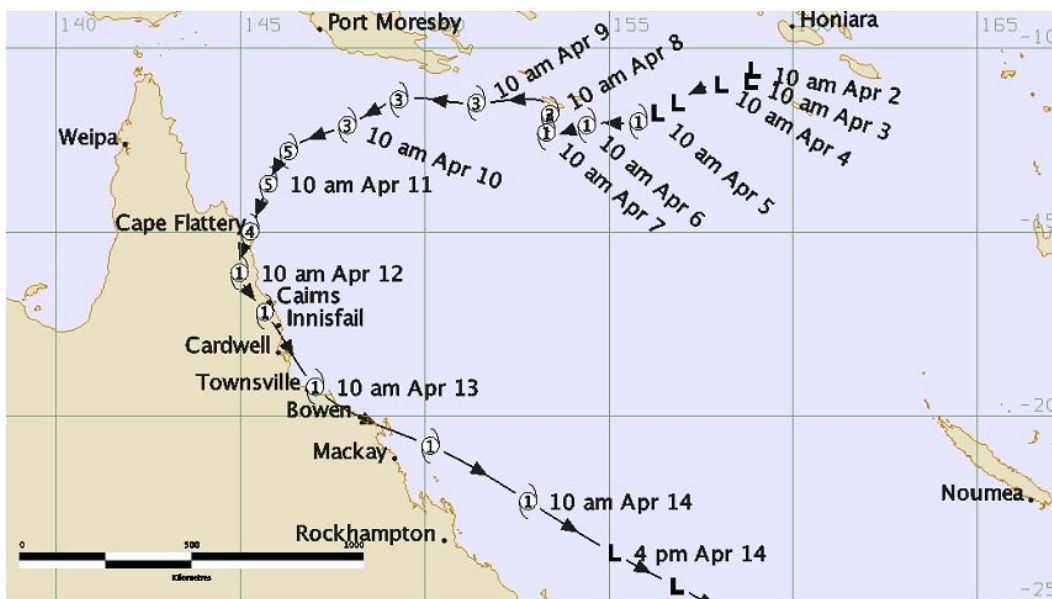
Source: the Authority - updated February 2014 NDRRA Estimates Review & 31 March 2014

## Tropical Cyclone Ita 11-14 April 2014

Severe Tropical Cyclone Ita impacted the east coast of Queensland on 11 April 2014 and generated heavy rainfall and flooding as it tracked down over the next three days.

The cyclone was the strongest tropical cyclone to impact Queensland since Cyclone Yasi in 2011. Crossing the coast as a Category 4 system, the cyclone brought damaging winds to coastal areas around Cape Flattery where gusts peaked at 160 km/hr.

Cooktown, the closest populated area to where the cyclone moved ashore, suffered the most structural damage from winds with approximately 200 buildings around the town damaged or destroyed.



*Path of Tropical Cyclone Ita (Courtesy: BOM)*

Weakening to a Category 1 system, the cyclone caused its greatest impact as it tracked south dumping large volumes of rain along the north Queensland coast. Widespread 24 hour rainfalls of over 300mm, peaking at approximately 400mm, were recorded in the North Tropical Coast and Herbert and Lower Burdekin districts. The Daintree, Mulgrave, Haughton and Herbert Rivers all recorded major floods. Flash flooding occurred at Bowen where 110mm of rainfall in one hour was recorded.

Significant losses were also suffered by the agricultural sector, with damage occurring to sugarcane, banana and tomato crops amongst others along the cyclone's path.



## Tropical Cyclone Ita 11-14 April 2014

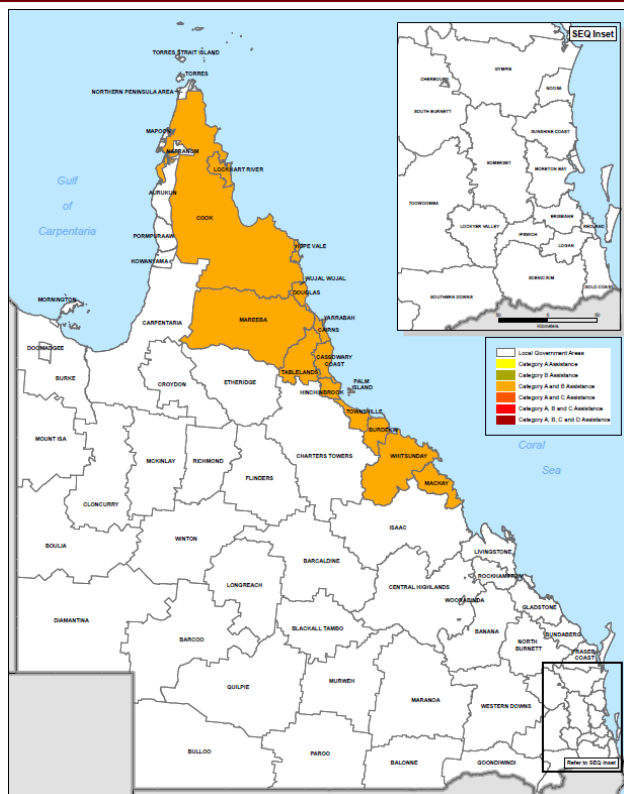
Damage to infrastructure is currently being assessed but the main council areas impacted include Douglas, Cook, Whitsunday and Cassowary Coast council areas.

Police Inspector Kevin Guteridge has been appointed to head recovery efforts for the affected regions. Inspector Guteridge has significant experience in disaster recovery, following his role as Recovery Coordinator Bundaberg - North Burnett in relation to the disaster from Cyclone Oswald.

To date, 16 councils from Lockhart River to Mackay have been activated for the following NDRRA assistance measures in relation to Tropical Cyclone Ita:

- Counter Disaster Operations
- Restoration of Essential Public Assets
- Freight Subsidies for Primary Producers
- Natural Disaster Assistance (Concessional Loans) for Primary Producers
- Personal Hardship Assistance Scheme (PHAS)\*.

To assist with the recovery effort, specialist damage assessment teams and other representative from the Authority were deployed to affected regions to offer advice and support in the immediate aftermath of the event. At month end, Authority teams remain deployed assisting councils with infrastructure damage assessments and NDRRA submission preparation.



*Councils activated for NDRRA assistance as a result of Tropical Cyclone Ita (as at 31 April 2014)*

**LEGEND:**

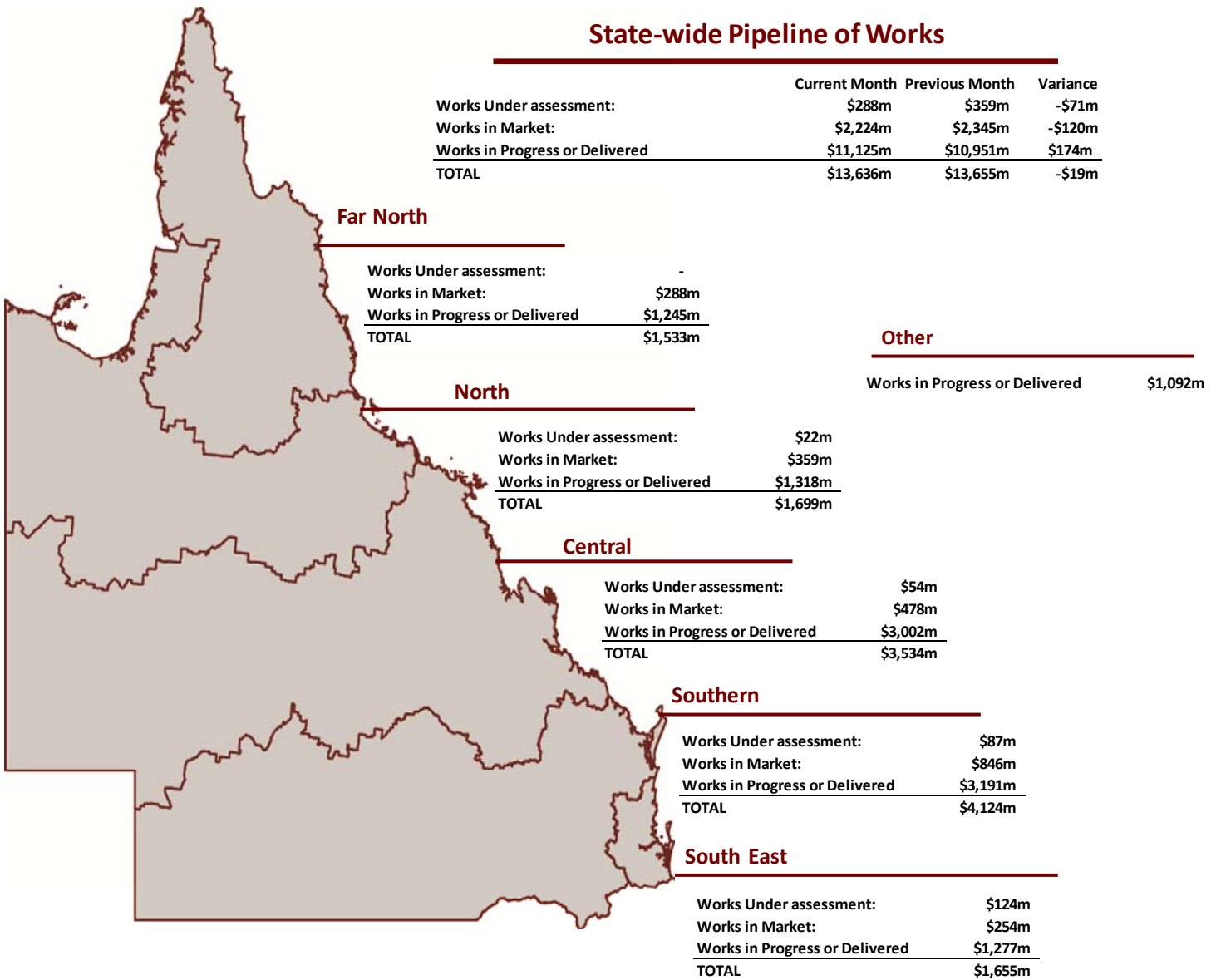
1. West Coast Hotel, Cooktown which lost its roof during Cyclone Ita (Cook Shire Council)
2. Hope Vale banana crops received extensive damage (Hope Vale Aboriginal Shire Council)
3. Tomato crops in Bowen ruined as a result of Cyclone Ita (Whitsunday Regional Council)
4. Township of Ingham under flood (Hinčinbrook Shire Council)
5. Township of Halifax under flood (Hinčinbrook Shire Council)
6. Bruce Highway – Herbert River crossing, Ingham. (Hinčinbrook Shire Council)
7. Assessments being carried out on Spoor Road, Proserpine (Whitsunday Regional Council)
8. Damage around the Daintree (Douglas Shire Council)
9. Gowrie Creek Bridge, west of Abergowrie township (Hinčinbrook Shire Council)



\* PHAS activation is limited to Hope Vale and Wujal Wujal and the towns of Cooktown and Laura within the Cook Shire.

### 3.4 State-wide pipeline of works

The Pipeline of works for events actively managed by the Authority (2009 to 2014) has an updated estimated program value of \$13.84 billion, the status of which is set out below. The program value includes Initial estimates of the impact of Tropical Cyclone Ita on the program of works following updates to the preliminary February 2014 estimates review.



**Note:**

1. Works Under Assessment and Works in Market represents data as at 31 March 2014 (DTMR) and 5 May 2014 (LGAs and Other). Works in Progress or Delivered represents spend by delivery agents to 31 March 2014 as reported to the Authority at 5 May 2014. Additional works have been conducted but are yet to be reported to the Authority
2. Other encompasses SDAs other than DTMR as well as the 2011 and 2013 Other Assistance.

#### Pipeline of Works Definitions

Stage	Description
Works under Assessment	Applications for packages which are currently under assessment by the Authority or are awaiting additional information from the applicant.
Works In Market	Estimate of spend remaining on works in progress and packages which have been approved by the Authority and are in the tender or contract process.
Works in Progress or Delivered	Expenditure as reported to the Authority on packages in progress or delivered.

Source: DTMR at 31 March 2014; and the Authority at 5 May 2014

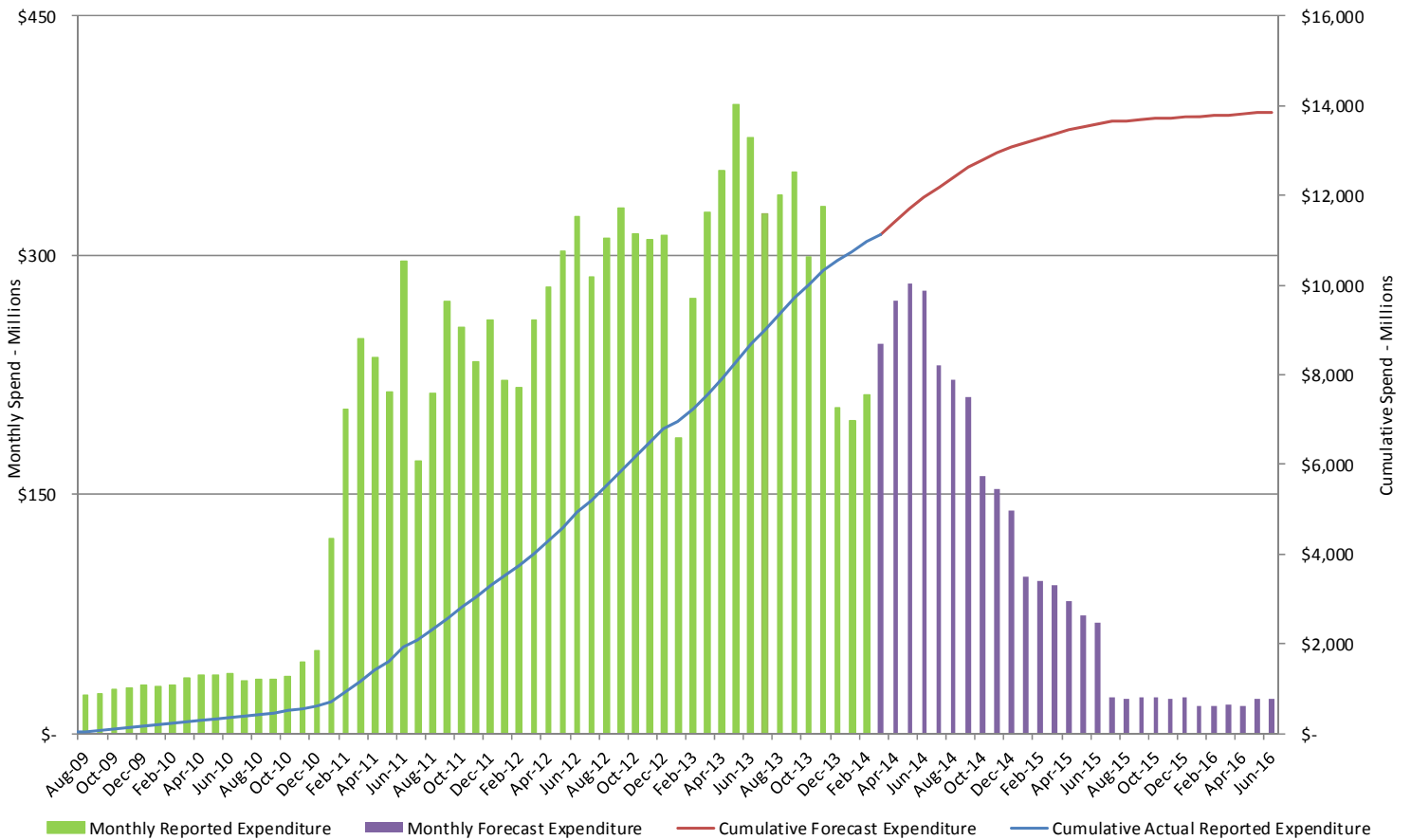


### 3.5 Program of works expenditure

The figures below represents the monthly reported expenditure and estimated costs on a combined basis for events managed by the Authority (2009 to 2014).

Initial estimates of the impact of Tropical Cyclone Ita on the program of works are included following updates to the preliminary February 2014 estimates review.

**Figure 3.5.1 Combined Program of Works - monthly expenditure**



Source: the Authority - cumulative expenditure by delivery agents to 31 March 2014 as reported to the Authority at 5 May 2014; and updated program estimates per 28 February 2014 NDRRA Review

### 3.6 State-controlled roads and highways

DTMR's Transport Network Reconstruction Program (TNRP) manages the recovery and reconstruction of Queensland's integrated transport system to reconnect Queensland communities and economies following the damage from natural disaster events in 2010, 2011, 2012 and 2013.

DTMR's reconstruction program as a result of the natural disasters of 2014 is currently being scoped and will be provided in future reports.

The transport system includes state-controlled roads, ports, navigation aids and the rail network.

#### The current state of activity\*:

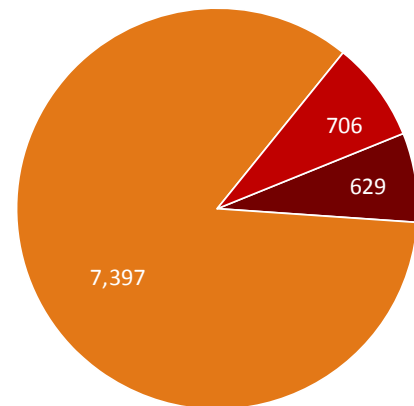
**Roads** – \$5.1 billion of projects have been completed for both recovery and reconstruction works (excluding maritime infrastructure) for works resulting from the disaster periods of 2010 to 2013 and \$1.2 billion of reconstruction works are currently underway. Of the 8,732km of roads which DTMR plans to reconstruct following damage from the 2010 to 2013 natural disaster events, 7,397km had been reconstructed to 31 March 2014. A further 706km of road is under construction on active works contracts. *See Figure 3.6.1 and TNRP Summary map.*

- **Rail** – 3,100km (43%) of Queensland Rail lines were closed or had limited access due to the natural disaster events in early 2013, and all have been recovered and services resumed.
- **Maritime** – repairs have been required to navigation aids, jetties and other boating infrastructure following natural disasters from 2010 to 2013. The events of 2013 affected seven ports (all of which have since been reopened without restriction) and damaged or destroyed 348 aids to navigation, of which 347 have since been recovered and 1 temporarily fixed.

#### Key achievements:

- During March 2014, DTMR expended approximately \$134 million on reconstruction works across the State arising from natural disaster events between 2011 and 2013. The cumulative spend on reconstruction of the transport network to 31 March 2014 is \$5.7 billion for works resulting from the 2010 to 2013 disaster periods.
- There was 137km of damaged roads reconstructed in March 2014 bringing the total reconstructed since the program commenced to 7,397km (85%) of the total 8,732km damaged roads which DTMR plans to reconstruct from the 2010 to 2013 events\*.
- Construction commenced on 54 projects valued at \$91 million in March 2014 including works on the Warrego Highway (Metropolitan and Darling Downs regions); three 2013 Event projects on the Bruce Highway (Gin Gin to Benaraby), Bruce Highway (Benaraby to Rockhampton) and Burnett Highway (Monto to Biloela) in Fitzroy Region; and 23 projects in the Wide Bay/Burnett Region.
- Construction was completed on 19 projects valued at more than \$30 million in March 2014 including two projects on the Capricorn Highway and Bruce Highway (Rockhampton to Duaranga) in Fitzroy Region, Grigor Bridge (North Coast Region) and the Beechmont Road land slip project (South Coast Region).
- In March, 9,615 stakeholder notifications were provided about reconstruction works and 431 customer enquiries were responded to. The majority of information provided related to start of construction, property access and project updates.

Fig.3.6.1 Roads damaged/reconstructed - 2010 to 2013 events\*



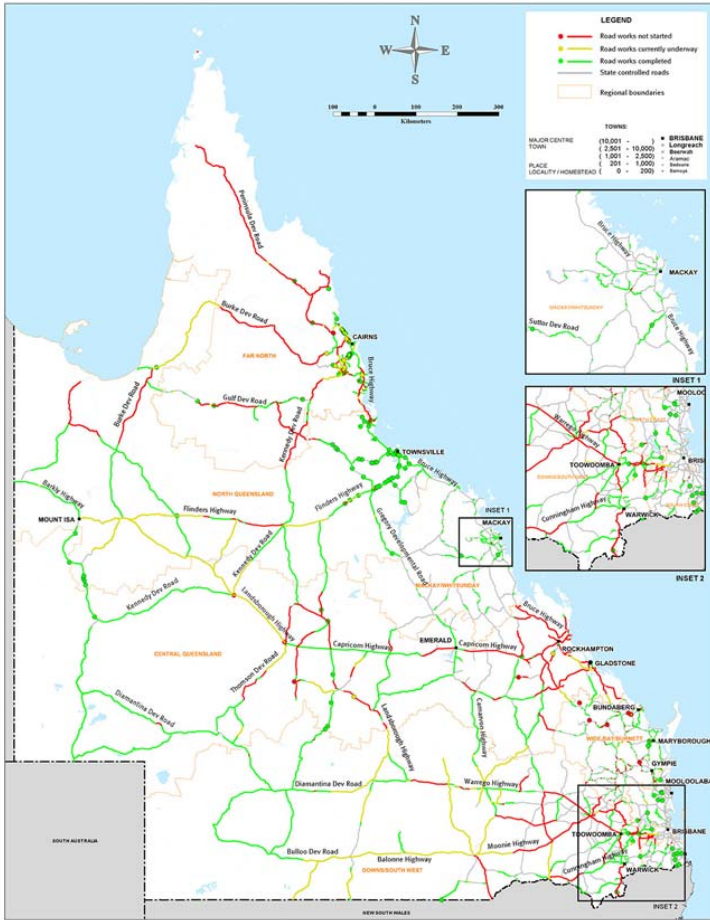
- Roads (km) to be reconstructed - works yet to commence
- Roads reconstructed (km)
- Roads under construction (km)



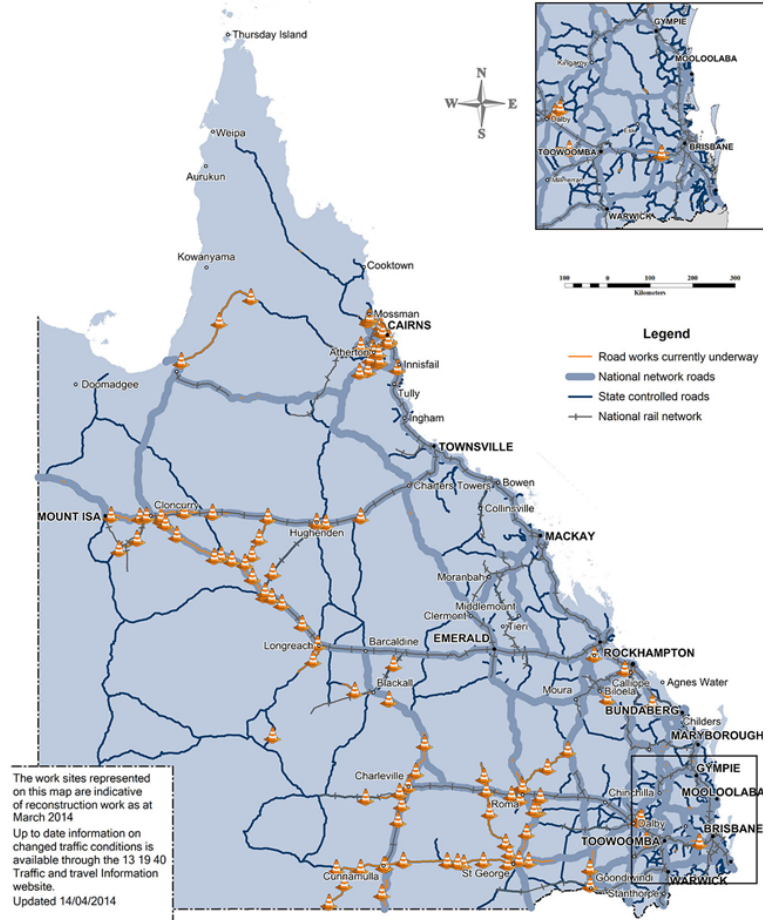
Above: grave compaction works underway on the Cloncurry to Dajarra Road - March 2014

\* values include kms and costs to reconstruct works from damage caused by events in 2010, 2011, 2012 and 2013. Reporting on scope and cost of reconstruction works from 2014 events will be provided in future reports following finalisation of TMR's reconstruction program for 2014 events.

**Fig.3.6.2 TNRP summary of reconstruction works to date - March 2014**



**Fig 3.6.3 TNRP reconstruction work sites - March 2014**



(Source: DTMR 31 March 2014)

### 3.7 Betterment fund status

The \$80 million Betterment fund is a Category D relief measure available to LGAs that have been declared for NDRRA assistance for the flood, storm and cyclone disaster events that occurred in Queensland in early 2013 for the restoration or replacement of essential public assets to a more disaster resilient standard than their pre-disaster standard.

The Betterment Fund was announced in February 2013 following Tropical Cyclone Oswald which caused damage to many of the assets which had been repeatedly damaged and restored from earlier disaster events. Correspondence was received from the Commonwealth in August 2013 agreeing to an extension of the Betterment fund to also cover LGAs declared for the two additional disaster events that occurred after Oswald through to June 2013 - Longreach Flood (18 February 2013) and Central and Southern Queensland Low (25 February to 5 March 2013).

#### Status

Expressions of Interest (EOI) were received by the Authority from 48 councils with approximately \$1 billion worth of Betterment projects to improve the resilience of infrastructure to natural disasters. Under the Betterment Framework, in addition to the normal NDRRA submission assessment process, the Authority considered the financial and non-financial benefits of the betterment proposal such as possible prior damage, loss of availability and its impact on economic or social factors of the community.

The majority of the Betterment Fund has now been allocated to approved projects. 220 projects with a betterment component have now been approved. These projects have an estimated total cost of approximately \$152 million, which includes \$78.5 million in Betterment funding and Council contributions of \$12 million.

Works have commenced and are substantially progressed on a number of approved Betterment projects. To date, 28 Betterment projects have been reported as being more than 50% progressed, including Upper Mount Bentley Road (Palm Island Aboriginal Shire Council), Old Wharf Road (Hinchinbrook Shire Council), Richmond Road (Croydon Shire Council), Bucca Road and Gentle Annie Road (Bundaberg Regional Council), One Mile Bridge (Ipswich City Council) and a suite of projects for Fraser Coast and South Burnett Regional Councils.

Progress reports on the Gayndah Water Intake plant and the Bongaree Seawall Betterment project are provided in Section 4.

## **Section four: Progress Reports**



## 4.1 Iconic projects in reconstructing Queensland\*

Project	Value (\$m)	Description	Status
<b>BCC Riverwalk (Cat D)</b>	\$72.0	<p>The Brisbane Riverwalk was a unique pedestrian and bicycle path which linked the city's CBD with the inner suburb of New Farm. It also provided a direct link with tertiary education, entertainment, recreation, commercial, community and residential precincts in the inner city.</p> <p>The floating infrastructure was destroyed by the January 2011 floods and the whole structure was subsequently removed. Following detailed public consultation, Brisbane City Council decided to replace the previously floating walkway with a fixed, jetty-like 850 metre long structure between New Farm and the CBD. The deck will be approximately 3.4 metres above average high tide level, high enough to minimise corrosion caused by salt water.</p> <p>The walkway's 37 piles will be anchored into the riverbed, providing the structure with a strong, more flood-resilient foundation. It will feature 24 hour lighting, separate pedestrian and cyclist paths and shaded rest areas. The design also included a rotating opening span to allow for the passage of vessels to and from moorings.</p> <p>Funding for the project is being provided through special (Category D) funding under NDRRA arrangements.</p>	<p>The construction of Riverwalk commenced in late July 2013 with a 55m-long barge mobilised in the Brisbane River carrying a 280-tonne crane and a piling rig. Since this time, a second piling barge and a third barge dedicated to installing the girders have also been mobilised.</p> <p>Construction of both the north abutment at the Howard Smith Wharf end and the south abutment at the Merthyr Road end is underway.</p> <p>All 37 piles have now been poured and 27 of the 30 concrete girders have been cast at the on-site works compound. By month end, 17 of these girders had been installed on the piers, with nine girders being fitted for balustrades and conduits in the pre-cast yard.</p> <p>The design for the opening-span swing bridge has been completed and fabrication and painting of the bridge is underway off-site.</p> <p>Riverwalk is being constructed by John Holland Construction Group.</p>



Electrical cables being fitted to the underside of a girder (top) and girder being lifted onto the load out facility for the barge (centre and bottom)



Steel liners being transported to site whilst the 16th girder is lowered onto the pier searing plates



Concrete being poured into one of the piles that are embedded into the riverbed



(Courtesy: Brisbane City Council)

\* Iconic projects represent projects that may be complex or of great significance to the local community.

## 4.1 Iconic projects in reconstructing Queensland (continued)

Project	Value (\$m)	Description	Status
<b>Gayndah Water Supply Intake Station</b>  (Cat B and Cat D)	\$3.9	<p>The Gayndah Water Supply Intake Station on the Burnett River provides the town's only water supply and supports a population of approximately 2000, as well as local primary industries.</p> <p>The pumping station was rebuilt after being severely damaged in 2011; only to have the new jetty, raw water intakes, pumps and water discharge main destroyed by the floods of early 2013.</p> <p>The pumping station is being rebuilt and improved through a combination of Category B NDRRA funding (for the cost of reconstructing the damaged station), Category D Betterment funding (for the incremental cost of betterment works) and council contribution. The betterment package includes a new submersible-style pumping station, a water intake upstream of the weir and a new raw water main to the water treatment plant.</p> <p>Making this piece of infrastructure more flood resilient will help secure Gayndah's water supply and improve the efficiency and reliability of this important piece of community infrastructure in the case of extreme weather.</p> <p style="text-align: right;"><i>Right: Stage two works underway at Claude Wharton Weir to Gayndah Water Supply Intake Station betterment project - April 2014</i></p>	<p>The Gayndah Water Supply Intake Station was the first project to be approved under the Betterment Fund.</p> <p>Works commenced on the first of two stages of works in mid-November 2013. The first stage to install a new main pipeline from the water intake structure at Claude Wharton Weir was delivered by Doval Constructions Pty Ltd and completed in January 2014.</p> <p>Stage two works to construct the submersible pumping station and a water intake upstream of the weir is being undertaken by Abergeldie Constructions. Works commenced on site in March and divers were on site prior to the Easter break to assist with the concrete blinding for the base foundation.</p> <p>In May, concrete is planned to be poured, followed by placement of sections of the intake structure by crane.</p> 
<b>Grigor Bridge, Conondale</b>	\$4.5	<p>Grigor Bridge is a major crossing of the Mary River on the Maleny-Kenilworth Road near Conondale, in the Sunshine Coast hinterland. The original single-lane timber Grigor Bridge was built in 1929 and was extensively damaged during flooding in October 2010 and again in January 2011.</p> <p>The total project comprises \$4.5 million of NDRRA funding representing the estimated cost of replacing the original structure, and more than \$5 million complementary funding for an additional lane and raising the bridge plus embankments and culverts. The complementary works are intended to improve flood immunity, safety and traffic capacity.</p> <p>Construction activity in the river is scheduled to accommodate the breeding cycles of a number of iconic species found in the Mary River including the Mary River Turtle and Mary River Cod.</p> <p style="text-align: right;"><i>Right: completed works - Grigor bridge, Maleny-Kenilworth Road, April 2014</i></p>	<p>The new Grigor Bridge opened to traffic on 17 February 2014.</p> <p>In March 2014, all pavement and seal works were completed on both approaches to the bridge. Demolition of the original timber bridge was also completed.</p> <p>The "bat boxes" installed prior to the opening of the new bridge were another illustration of the project's success in protecting the Mary River and its wildlife.</p> <p>The remainder of the project is on track for completion in May 2014, ahead of its scheduled June completion.</p> 

## 4.1 Iconic projects in reconstructing Queensland (continued)

Project	Value (\$m)	Description	Status
<b>Bongaree Seawall, Bribie Island</b>  (Cat B and Cat D)	\$2.8	<p>The Bongaree Seawall protects the coastal community of Bongaree on the western side of Bribie Island in the Moreton Bay region.</p> <p>Extreme storm surges as a result of ex-Tropical Cyclone Oswald in January 2013 caused significant erosion of the sand at the base of the wall damaging the foundation and causing almost 200 metres of the wall to collapse. The damage undermined the footpath and road adjacent to the seawall.</p> <p>The restoration and betterment works include demolishing the existing wall and constructing a stepped concrete seawall in front of the existing shallow skirt, to protect the slab during erosion events. The stepped seawall design will also incorporate vinyl sheet piles at the toe of the wall to increase the wall's resilience.</p> <p>Rock from the demolished wall will be buried to form additional protection to the toe of the wall and wall drains and barriers will be included in the stepped seawall design to allow free drainage, which will help reduce pressure behind the wall and also reduce the risk of settlement and voids forming beneath the stepped wall.</p> <p>The estimated cost of the project is \$2.8 million, of which \$450,000 is eligible for NDRRA Category B funding, \$1.9 million is being funded from the Betterment Fund and Moreton Bay Regional Council is contributing \$465,000 towards the works.</p>	<p>The project is being delivered in two stages, with the first stage comprising the near 200 metre reconstruction of the collapsed seawall; and stage two the extension of the project to the 242 metre southern section of the seawall.</p> <p>The works have been awarded to Auzcon Pty Limited, a local Queensland based construction company.</p> <p>The first stage of works commenced on 23 September 2013 and was completed at the end of April. Stage Two works commenced in early May 2014 with the demolition of damaged seawall components which is now underway. The first section of the new Stage Two seawall component is on track to be in place by mid-May and is expected to take approximately four to six months to complete, weather permitting.</p>  <p><i>Works underway to Bongaree Seawall, Bribie Island (Courtesy: Auzcon Pty Ltd)</i></p>
<b>Palm Island Seawall</b>	\$14.2	<p>The Palm Island foreshore provides the focal point for the island's community. It is the location of culturally significant landmarks and memorials as well as the island's community facilities.</p> <p>The seawall in Challenger Bay protects the foreshore and Palm Island coastline through providing wave dissipation and erosion mitigation. Damage to the seawall occurred as a result of Cyclone Yasi in February 2011.</p> <p>The reconstruction project involves reconstruction of 1.3km of seawall, comprising rockwall and pre-cast concrete bulkhead sections.</p> 	<p>The project commenced in November 2013 with the transfer of equipment to site from Townsville and Cairns via barge. The works are being delivered by Koppen Developments, a Cairns-based construction company.</p> <p>To date, approximately 75% of the rockwall has completed construction.</p> <p>For the concrete pier and panel section, all of the piers and panels have now been cast in Townsville. Of a total 141 precast piers, 130 have been delivered to site and 87 have been installed. 63 of 140 precast panels have also been delivered to site, of which 33 have been installed.</p> <p>Completion is expected in mid 2014.</p> <p><i>Works underway to Palm Island Seawall, April 2014, showing installed concrete piers adjacent to boat ramp</i></p>

## 4.2 Program spotlights

### Brisbane City Council Tender awarded for Category D Ferry Terminals projects

In April 2014, Brisbane City Council announced McConnell Dowell Constructors as the successful tenderer to complete upgrades of seven CityCat and City Ferry terminals damaged in the January 2011 floods.

The works are being delivered as part of a total \$145 million Category D funding package for Brisbane City Council for the projects to reconstruct Riverwalk and the most severely damaged ferry terminals.

The January 2011 floods damaged all of Brisbane City Council's ferry terminals. To return service as soon as possible, Council replaced the seriously damaged terminals with temporary terminals. The seven temporary terminals were built to pre-flood standards meaning that in the event of another major flood, it was likely it would need to be rebuilt again.

The seven replacement ferry terminals are located at The University of Queensland (St Lucia), Regatta (Toowong), North Quay (CBD), Maritime Museum (South Brisbane), QUT Gardens Point (CBD), Holman Street (Kangaroo Point) and Sydney Street (New Farm). The project will also include reconstruction of two City Cat moorings at The University of Queensland and Dutton Park.

The design group, Cox Rayner, Derlot, Aurecon have created a template for the new terminals which integrates technical innovation, improved accessibility for all passengers and flood resilience.

The terminal upgrades includes installing a dual-berthing pontoon and engineering the pier, pontoon and gangway with the capacity to deflect or avoid heavy debris in flood waters.

The piers will be anchored to the riverbed by steel piles so it is unlikely to float away in a severe flood event and are designed to deflect debris away from the terminal to avoid significant impact to the pontoon. The upstream end of the boat-shaped pontoons have also been designed to include additional deflection capabilities, further protecting the terminal during a flood. In a world first for a ferry network, state-of-the-art gangways have been designed to detach at the shore end during a flood. By detaching, the gangway can rise with flood waters and swing behind the pontoon, removing it from the direct impact zone from debris in the water. The gangway has also been specially designed to remain accessible during most tidal conditions. Landings on the gangway will remain flat even as the river rises and falls.

Works are scheduled to begin mid-year with completion of all ferry terminal works expected in mid-2015.



*Damage to the North Quay terminal during the 2011 flood event*



*Concept design for upgraded ferry terminal—Regatta terminal*



*Artist impression of upgraded North Quay ferry terminal*



## 4.2 Program spotlights (continued)



Damage (top and centre) and nearing completion of works (bottom) to Gregory Springs Road

### Charters Towers Regional Council Gregory Springs Road

Gregory Springs Road is a major secondary road that runs north-west from Pentland township, a rural centre for the grazing industry 110 kilometres west of Charters Towers along the Flinders Highway.

This remote area of the region is in the headwaters of three major river systems feeding into the Burdekin River, with Gregory Springs Road essential for the safety and industry of the area. When this road is damaged, repairs require long travel distances and provision of accommodation, increasing costs.

Gregory Springs Road suffered damage at multiple sites during the 2011 and 2012 flood events with loss of pavement formation, washouts, scouring, rutting and potholing. Council was approved to undertake restoration works including gravel re-sheeting, formation grading, debris removal and rock protection.

Using Council's internal workforce to undertake the works rather than contractors has seen the estimated final cost of the project reduced to less than \$2 million, approximately 25% lower than the original estimated value.

Charters Towers Mayor Frank Beveridge said the flood damage repair work has also proved significant for Council's road infrastructure workforce. "Council is currently employing 30 staff on NDRRA contract work. Additionally as our workforce is doing this work, they are also doing road maintenance work to complement the flood damage and that's also a good outcome," he said. "A benefit of Council undertaking these works is that we have a larger pool of resources in the area than other contractors so when there is an issue with a machine breaking down we are able to replace it quickly and continue on with the works."

"Council also have a good rapport with the local landowners, which is beneficial when setting up camp and accessing resources for the works," Councillor Beveridge said.

### DTMR Traffic updates over the airwaves

With DTMR undertaking the largest roadworks program in its history, the smooth flow of traffic has been a hot topic for transport operators, industry representatives and the rural and retail sectors. The team in Northern region has taken to the airwaves to keep motorists informed, particularly heavy vehicle operators, about roadworks within the region.

DTMR's Traffic Systems Coordinator Bruce Bernhardt explains that "frustrated truckies often call radio stations to complain that they are stuck at roadworks". Providing information about roadworks in advance is enabling motorists and truck drivers to better plan their journeys.



Local radio broadcaster Steve Price interviews DTMR North Queensland Regional Director David Atkinson about the benefits of the Townsville Traffic Management Centre while Control Operators Suzanne Van Eerde (left) and Deborah Dowdle look on

The region's Traffic Management Centre has developed a partnership arrangement with the local commercial and non-commercial radio stations to broadcast traffic updates in the morning and afternoon peak times. Each traffic report is delivered by local Traffic Management Centre staff and focuses on expected traffic delays and major project works within the region.

Each traffic report has an audience of more than 150,000 listeners in the surrounding region. As well as upskilling staff in broadcast operations, the reports provide a clear message to motorists about what to expect when they hit the road. This initiative has been such a success that it is now a key part of the region's ongoing engagement with the community.

Through the Traffic Management Centre, the region has also developed a strong partnership with local Queensland Police Service officers, who access the centre to provide real-time updates about traffic conditions to police on traffic control duty. This in turn ensures officers on the ground can keep delays at roadworks to a minimum.

## 4.2 Program spotlights (continued)

### Gladstone Regional Council Completion of 2011 events program

Gladstone Regional Council is approaching completion of its almost \$50 million program of NDRRA arising from the flood events of 2011. Council's 2011 flood event comprises of 321 roads across the Gladstone region, which were constructed under three main contract packages.

Stage 1, undertaken by Robert House and Associates, comprised five roads was completed in December 2012. The Stage 2 Contract, undertaken by VDM Construction Eastern Operations, comprised 58 roads and was completed in August 2013. The final Stage 3 works comprising the largest package of works with 258 roads were undertaken by Golding Contractors and were substantially completed in October 2013.

Council's final 2011 Event project with a NDRRA component reached practical completion in April 2014.

One project which was undertaken as part of the Stage 3 works was the reconstruction of the bridge crossing Worthington Creek and connecting the Danube road to Tanti Road.

The Danube is a local access road which extends south from Turkey Beach Road, crosses Worthington Creek and connects to Tanti Road. Worthington Bridge is approximately 65km from Gladstone CBD, 30km from Agnes Water and 25km from the Bruce Highway.

The road is used as an access road to a number of properties in the area, local industries and as an access to adjacent National Parks. The road is also used as an access to maintain overland electrical distribution systems and as an alternative route to Agnes Water.

The road was closed by Council following the December 2010 flood event. Damage included washing away of embankments and approach roads on both sides of the 15 metre timber bridge, severe scours on the approaches to the bridge, washing away of previous geofabric protection provided to prevent erosion.

Repairs for other structural damage to the bridge are being undertaken by Council as complementary works.

Temporary works were carried out by Council on the approaches to the bridge to allow temporary access only and not designed to withstand damage from any further heavy rain.

The scope of works conducted included reinstatement of the embankment on the road approach, provision of gabion wall protection on the approaches, installation of concrete pavement on the approach to timber bridge and installation of apron.

The works commenced in October 2013 and were completed in December 2013 for a total cost of approximately \$300,000. Revision of the final design of the works resulted in cost savings of approximately \$75,000 relative to the original estimated value.



Top: damage to Worthington Creek bridge following 2011 flood event  
—April 2011

Centre: Construction works underway - November 2013

Bottom: Worthington Creek bridge following completion - March 2014

**Section five:  
Communications**



## 5.0 Communications

The Authority is focused on building stakeholder confidence in the reconstruction by ensuring consistent and regular communication of public information.

### 5.1 Communicating progress

#### Media analysis

There has been a total of 724 media items in April 2014 (370 print – 51%, 123 TV – 17%, 231 radio – 32%), which reached a cumulative audience of over 27 million people, with the focus this month being on Cyclone Ita, as well as flood mitigation, council recovery, and betterment projects.

April saw a great deal of local, state-wide and national media coverage across all outlets of those areas in North and Far North Queensland affected by Tropical Cyclone Ita. There were also media mentions for regions recovering and rebuilding from previous natural disasters across Queensland, including articles in the Caboolture News, Cairns Post, Capricorn Coast Mirror, Daily Mercury, Gatton Lockyer Brisbane Valley Star, Herbert River Express, Hervey Bay Observer, Innisfail Advocate, Kilcoy Sentinel, The Laidley Valley Weekender, Moreton Border News, Queensland Times, Tully Times and Roma Western Star; TV coverage on the ABC, WIN and Seven networks throughout the State; and radio mentions on 4WK Toowoomba and ABC Far North Queensland.

The Betterment Fund received coverage for projects in Lockyer Valley, North Burnett, Scenic Rim and Ipswich with articles appearing in regional media including the Fassifern Guardian, Queensland Times, and the Central and North Burnett Times.

The announcement of the reconstruction of Brisbane's Ferry Terminals saw press coverage in the Courier-Mail and the New Farm Village News and TV coverage on Channel 9 Brisbane.

#### Engagement activities

On 8 April, **Minister for Local Government, Community Recovery and Resilience, David Crisafulli**, and **Queensland Reconstruction Authority Chief Executive Officer (CEO), Graeme Newton**, travelled to the Whitsunday Regional Council in Bowen to speak with councillors about the Council's NDRRA program.

Following Tropical Cyclone Ita in Far North Queensland, **Minister Crisafulli** visited Cooktown, Lizard Island, Mossman, Hopevale, Kuranda, Tully, Ingham, Cairns, Douglas, Mareeba and Wujal Wujal to inspect damage and ensure affected communities were receiving prompt recovery assistance. **Authority CEO, Graeme Newton**, and the newly appointed **North Queensland Recovery Coordinator, Inspector Kevin Guteridge**, accompanied **Minister Crisafulli** on his visits to Douglas and Mareeba as well as visiting other impacted councils.

Authority representatives, including specialist damage assessment teams, were deployed to regions affected by Tropical Cyclone Ita to offer advice and support in the immediate aftermath of the event. At month end, Authority teams remain deployed assisting councils with infrastructure damage assessments and NDRRA submission preparation.

## Communications

There are a number of methods available to the public to communicate with the Authority.

The Authority's website provides information to the public and continues to be enhanced with ongoing updates, including information about Betterment projects. There has been a large number of visits to the website since it was launched on 18 February 2011. At 30 April 2014, total website visits amounted to 415,317 - an increase of 1.3% since last month. **(See Figure 5.1.1)**

In April, the Authority received an additional 37 calls to its dedicated hotline and 297 additional pieces of written correspondence were received. **(See Figure 5.1.2)**

Fig. 5.1.1 Website traffic

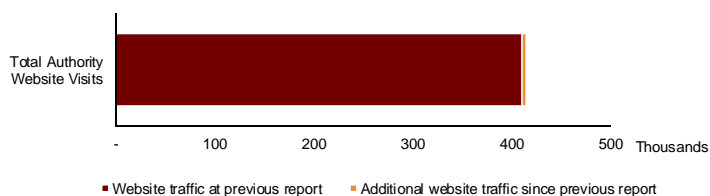
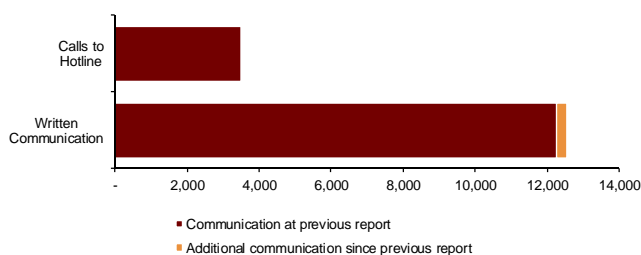


Fig. 5.1.2 Communications



(Source: the Authority at 30 April 2014)

## 5.2 Media reports

# Stage 2 for project

THE \$3.87 million relocation of Gayndah's water treatment plant, described as the flagship for Queensland's disaster resilient projects, has entered stage two.

Community Recovery and Resilience Minister David Crisafulli said the project was the first to be approved under the State's Betterment Fund.

"It wasn't a rigorous assessment process I can tell you," Mr Crisafulli said. The Gayndah water pumping been knocked out twice, but rebuilt to the same standard, in the same location, by the previous government.

"It was up and running just in time to be knocked

out again by the 2013 floods.

Mr Crisafulli said the government was committed to working with councils to ensure recovery in record time to meet standard. Flood-mitigation projects, such as the new submersible pumping station and a water intake upstream of Claude Wharton Weir, were a one-in-a-generation opportunity to spend a bit more upfront and get long-term results.

"Rather than go and stand beside a crumbling piece of infrastructure and cry crocodile tears next time it rains, I'm going to come and stand beside this," he said.



WATER TREATMENT: Mayor Don Waugh and Minister David Crisafulli at Gayndah's new water pump. PHOTO: SHIRLEY WAY

Central and North Burnett Times, 3 April 2014

## DEADLINE

Work worth \$6million to be completed by June 30

# Race to use disaster funds

Council fast-tracks tender process before infrastructure funding ends

Andrea Davy

andrea.davy@dailymercury.com.au

IT'S a race to get it done before the deadline is fast approaching.

Mission Regional Council has fast-tracked a tender to complete the last projects under funding from the 2012 Natural Disaster Relief and Recovery Arrangements.

About \$1 million worth of work that had to be completed by June 30, Cr Kevin Casey said.

Councillors voted in favour of awarding the last contract to Roadtek, which was confident the last of the work could be rolled out and completed on time, weather permitting.

Normally the tender approval process can take up to three months, but council was able to streamline the process in this case under the Local Government Act 2009.

Cr Casey said it was essential the work was completed on time, or the uncompleted jobs would fall back on the council.

"We really don't want to go down that path," he said. The contract was written in a way that any work wouldn't be started unless it could be completed on time.

Through NDRRA funding, about \$300 million worth of work had been carried out in the last three to four years.



NEW WORK: The last of the Natural Disaster Relief and Recovery Arrangements funded roadworks have to be completed by June 30. PHOTO: TONY MARTIN

Daily Mercury, 10 April 2014

## Slip restoration work to begin on Flagstone Creek Road

Lockyer Valley Regional Council began reconstruction work on a section of Flagstone Creek Road, between the intersection of Upper Flagstone Creek Road and the intersection of Blanchview Road, late this month.

Council, with Natural Disaster Relief and Recovery Arrangement (NDRRA) funding, will focus on embankment stabilisation, including the installation of rock mesh, soil nails and concrete drains. This will reduce the risk of further landslips.

Council's Mayor Steve Jones said the project would result in changes to traffic movement, with traffic control in place for the duration of the works.

"At times, the road may experience a short-term, periodic road closure," Cr Jones said.

"This will be kept to a minimum, with a maximum delay of 15 minutes expected during this time.

"Council reminds motorists to take care during road works. Drive to the speed limits and the conditions."

Weather permitting, the project will be completed by the end of June, 2014.

Restoration works are approved by the Queensland Reconstruction Authority and are delivered under the Natural Disaster Relief and Recovery Arrangements, a joint Federal (75 per cent) and State (25 per cent) Government initiative.

For more information on the flood restoration effort, visit Council's website [www.lockyervalley.qld.gov.au](http://www.lockyervalley.qld.gov.au) or contact 1300 005 872.

Gatton Lockyer Brisbane Valley Star, 30 April 2014

Innisfail Advocate, 2 April 2014

# Government assistance after cyclone

Whitsunday Regional Council Mayor Jenny Whitney said Federal-State Government assistance is now available for primary producers in the Whitsunday region following the impact of Cyclone Ita.

Mayor Whitney said she was on the ground the Monday after the storm with the Minister for Local Government, Community Recovery and Resilience David Crisafulli meeting with local farmers and assessing the damage to properties.

"There has been widespread damage to the horticulture industry around Bowen, but also the canegrowers in the southern part of the Whitsunday region have been impacted by the flooding caused by Cyclone Ita," Mayor Whitney said.

"The Queensland Government has announced that Category B assistance under Natural Disaster Relief and Recovery Arrangements (NDRRA) is now available for the Whitsunday region.

"These arrangements provide freight subsidies up to \$5,000 and access to concessional loans from QRAA up to \$250,000 at an interest rate of 1.7 per cent.

"Over the last few

days the Queensland Reconstruction Authority has also been on the ground in the Whitsunday region assessing the damage to our road networks.

"Dozens of roads were affected by flooding due to the impact of Cyclone Ita and we expect there will be assistance for road recovery and betterment projects for our region under NDRRA.

"The Council is well and truly into the recovery stages with our crews out in the community conducting cleanup works across the region.

"The final Don River flood mitigation report, which Council has been developing in conjunction with the Queensland Government, will be available at the end of June.

"I note the Federal Member for Dawson George Christensen and the State Member for Burdekin Rosemary Menkens have both said in recent days they look forward to seeing the outcomes of the final report.

"Council also looks forward to working with both levels of

Government to secure the funding needed to act on the recommendations

coming out of the report.

"I would like to thank the community for again being prepared for this weather event and I know the Whitsunday region will show their usual resilience when it comes to cleaning up and recovering from Cyclone Ita," she said. Primary producers seeking assistance should contact QRAA on 1800 623 946 or visit [www.qraa.qld.gov.au](http://www.qraa.qld.gov.au)

Whitsunday Guardian, 23 April 2014

# Minister makes bold recovery promise

THE cyclone Ita reconstruction work will be the "best ever" and the Government has pledged to focus the same amount of attention on small rural communities as major centres.

Minister for Local Government, Community Recovery and Resilience, David Crisafulli made the promise as he inspected the cyclone-battered

communities of Hope Vale and Wujal Wujal on Thursday.

He was keen to push the message that the Government would "see the job through".

"This is not just about the larger populated centres, it's everywhere," he said. "I'll look every far North Queensland in the eye and assure them we won't let people or infrastructure fall between the cracks."

Mr Crisafulli said it was widely accepted that the recovery from the 2013 Bundaberg floods was "the best in the state's history", but was adamant the cyclone Ita recovery would eclipse that effort.

"We're going to work with councils on the ground and rebuild to a higher standard and at a faster rate than people have seen before," he said.



INSTANT SCRUTINY: David Crisafulli and Inspector Kev Guteridge examine the devastation at a bridge site in Wujal Wujal.

Cairns Post, 21 April 2014

# Motorists urged to take care during bridge work

MORFETON The Regional Council began work this week on the upgrade of the Schiller Bridge on Oakley Flat Rd at Narangba.

Herbert River Council's Bob Miller said the project would involve the reconstruction of the bridge structure following a collapse from Rotatory Creek.

The replacement pedestrian bridge will remain open during construction work which is expected to be

completed in coming weeks subject to local weather conditions," Cr Miller said.

Council's contractor is expected to have a narrow lane and open workdays. Traffic management will be undertaken by the project contractor to minimise delays in the area especially during school drop-off and pick-up times.

"Traffic signs and cones are placed near the bridge

to give motorists warning about the possible change in local traffic conditions," District 12 Cr Adrian Boudt said.

"Council thanks residents and motorists for their patience. The project is being funded by the joint State and Federal Natural Disaster Relief and Recovery Arrangements. For more information contact 3066 6625.

Caboalture News, 2 April 2014

Herbert River Express, 16 April 2014

# Footbridge expected to be open by end of May

PEAK Crossing's flood smashed pedestrian footbridge is expected to be completed by the end of May.

It was destroyed when the steel structure buckled under the debris carried by the Purga Creek floodwaters in January 2013. The replacement footbridge is currently under construction at a cost of almost \$500,000.

The project has been funded by the Natural Disaster Relief and Recovery Arrangements, funded jointly by the State and Federal government and through betterment funding through the Qld Reconstruction Authority.

"Work on the new footbridge commenced in mid-March and we expect it will be complete by late May weather permitting," said Mayor John Brent.

Cr Duncan McInnes added that the completion of the replacement footbridge was much-anticipated by the Peak Crossing community.

"The bridge is an important pedestrian thoroughfare, particularly for children making their way to and from Peak Crossing State School."

Herbert River Express, 2 April 2014

Fassifern Guardian, 16 April 2014

# Appendices



# Appendix A: Local Government Areas by Region

