

**QUEENSLAND RECONSTRUCTION AUTHORITY**

# **Monthly Report**

**December 2014**

## **Document details:**

Security classification	Public
Date of review of security classification	December 2014
Authority	Queensland Reconstruction Authority
Author	Chief Executive Officer
Document status	Final
Version	1.0

## **Contact for Enquiries:**

*All enquiries regarding this document should be directed to:*

*Queensland Reconstruction Authority*

*Phone the call centre - **1800 110 841***

## **Mailing Address**

Queensland Reconstruction Authority

PO Box 15428

City East Q 4002

*Alternatively, contact the Queensland Reconstruction Authority by emailing [info@qldra.org.au](mailto:info@qldra.org.au)*

## **Licence**

*This material is licensed under a [Creative Commons - Attribution 3.0 Australia licence](#).*



*The Queensland Reconstruction Authority requests attribution in the following manner:*

© The State of Queensland (Queensland Reconstruction Authority) 2011-2014

## **Information security**

*This document has been classified using the [Queensland Government Information Security Classification Framework \(QGISCF\)](#) as PUBLIC and will be managed according to the requirements of the QGISCF.*

---

*Message from the Chief Executive Officer*

Major General Richard Wilson AO (Ret'd)  
Chairman  
Queensland Reconstruction Authority

Dear Major General Wilson

It is with pleasure that I present the December 2014 Monthly Report – the 46th report to the Board of the Queensland Reconstruction Authority (the Authority).

The Authority was established under the *Queensland Reconstruction Authority Act 2011* following the unprecedented natural disasters which struck Queensland over the summer months of 2010-11. The Authority is charged with managing and coordinating the Government's program of infrastructure renewal and recovery within disaster-affected communities, with a focus on working with our State and local government partners to deliver best practice expenditure of public reconstruction funds. Since its establishment, the role of the Authority has subsequently been extended to cover historical and continuing disaster events in Queensland.

The December report provides an update on the progress of recovery. Following the passing of the timeframe for delivery of much of the reconstruction works arising from the 2011 and 2012 events, the Authority is currently focused on closing out the massive volume of works completed up to 30 June 2014 for acquittal to the Commonwealth. Concurrently, the Authority is also actively managing delivery of the considerable program of works remaining from Tropical Cyclone Oswald and other events of 2013 and 2014 through the damage assessment, submission preparation and approval and delivery phases.

Inclusive of these tasks, the Authority is managing a total program of works for events from 2009 through to 2014 with an estimated total cost of \$13.3 billion. As at 1 December 2014:

- an additional \$83 million in submissions have been received by the Authority since last month
- an additional \$116 million has been processed by the Authority since last month
- a cumulative value of \$12.35 billion of the \$13.33 billion works program (2009 to 2014) has been reported to the Authority as being in progress or delivered by delivery agents as at 31 October 2014.

The December report provides updates on the progress of major reconstruction projects underway and highlights the recent completion of the Weipa-Mapoon Access Road project, a betterment project intended to improve the resilience of a key access route for the remote Mapoon community during disaster events. The report highlights the recent recognition of two major DTMR flood reconstruction projects for civil engineering excellence, and the successful use of day labour in delivering reconstruction works in Townsville. The report also profiles the rapid deployment of damage assessment teams by the Queensland Fire and Emergency Services, with assistance from the Authority, in response to the severe storm that left a path of destruction through Brisbane and surrounding areas in late November 2014.

I commend the report to you and recommend its release to the Minister and the public pursuant to Section 41 of the *Queensland Reconstruction Authority Act 2011*.

Yours sincerely



Frankie Carroll  
Chief Executive Officer  
Queensland Reconstruction Authority

# Contents

<b>1.0 Introduction</b>	<b>1</b>
1.1 Background	2
1.2 Purpose	2
1.3 Timing	2
<b>2.0 Disaster Assistance</b>	<b>3</b>
2.1 Queensland Disaster Assistance Framework	4
2.2 Disaster assistance by event period	5
2.3 Events managed by the Authority	6
2.4 Additional assistance measures	7
2.4.1 Betterment fund	7
2.4.2 Other assistance measures	7
<b>3.0 Program Status</b>	<b>8</b>
3.1 Recent developments	9
3.2 Combined program status	9
3.3 Program of works expenditure	9
3.4 State-wide pipeline of works	10
3.5 State-controlled roads and highways	11
3.6 Betterment fund status	12
<b>4.0 Progress Reports</b>	<b>13</b>
4.1 Iconic projects in reconstructing Queensland	14
4.2 Program spotlights	16
<b>5.0 Communications</b>	<b>19</b>
5.1 Communicating progress	20
5.2 Media reports	21
<b><u>Appendices</u></b>	
Appendix A: Local Government Areas by Region	23

**Section one:**  
**Introduction**



# 1.0 Introduction

## 1.1 Background

Queensland has been struck by a series of unprecedented natural disasters in recent years. Between November 2010 and April 2011, extensive flooding caused by periods of extremely heavy rainfall, destruction caused by a number of storm cells including Cyclones Tasha, Anthony and Severe Tropical Cyclone Yasi and subsequent monsoonal flooding, resulted in all of Queensland being declared as disaster affected.

On 21 February 2011 in response to the 2011 disaster events, the Queensland Government established the Queensland Reconstruction Authority (the Authority) under the *Queensland Reconstruction Act 2011*. The Authority's role was subsequently extended to cover historical and continuing disaster events in Queensland.

The Authority has since been given responsibility to administer Natural Disaster Relief and Recovery Arrangements (NDRRA) for the large scale natural disaster caused by Tropical Cyclone Oswald in late January 2013 and additional events which have occurred in the 2013 and 2014 disaster event periods. The *Queensland Reconstruction Authority Amendment Bill 2013* was passed on 14 February 2013 to expand the jurisdiction of the Authority to include the 2013 events.

## 1.2 Purpose

The Authority's mission is **to reconnect, rebuild and improve Queensland communities and its economy**.

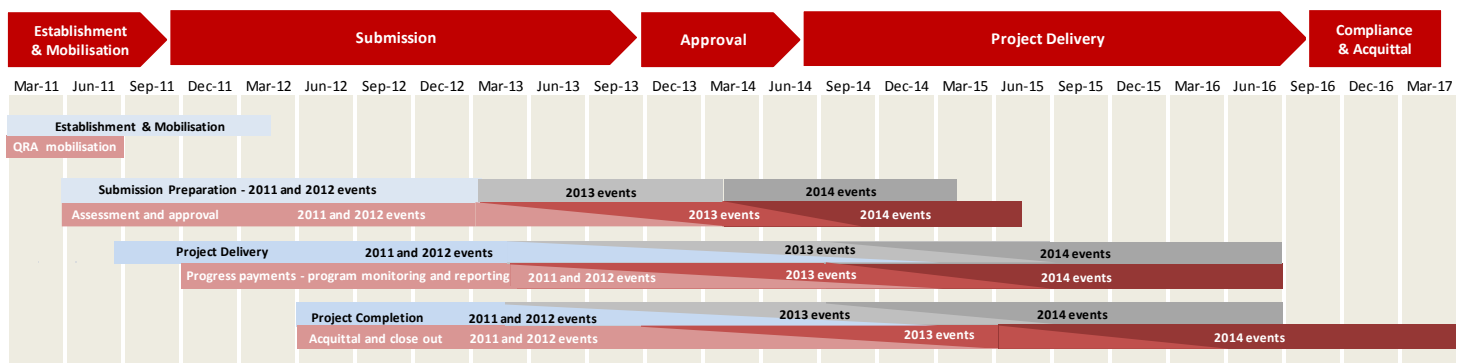
The Authority is charged with managing and coordinating the Government's program of infrastructure renewal and recovery within disaster-affected communities, with a focus on working with our State and local government partners to deliver best practice expenditure of public reconstruction funds.

The Authority operates with reference to recovery and reconstruction plans established by the State in response to the 2011 disaster events and more recently following Tropical Cyclone Oswald in 2013 and Severe Tropical Cyclone Ita in 2014. Most recently, the Severe Tropical Cyclone Ita Recovery Plan (Recovery Plan), provides strategic guidance for the coordination and management of recovery, reconstruction and community resilience activities undertaken across the State after the flood and damage impacts of Severe Tropical Cyclone Ita.

## 1.3 Timing

The Authority's priorities are currently assisting councils and State agencies to complete their reporting and progress through the close out and acquittal phase of their program of works from the 2011 and 2012 disaster periods, with the bulk of the reconstruction work having occurred prior to 30 June 2014.

The Authority is also assisting with the damage assessments from the 2014 events and monitoring of the remaining 2012, 2013 and 2014 programs into, and through, the project delivery phase as soon as practicable.



**Section two:**  
**Disaster Assistance**

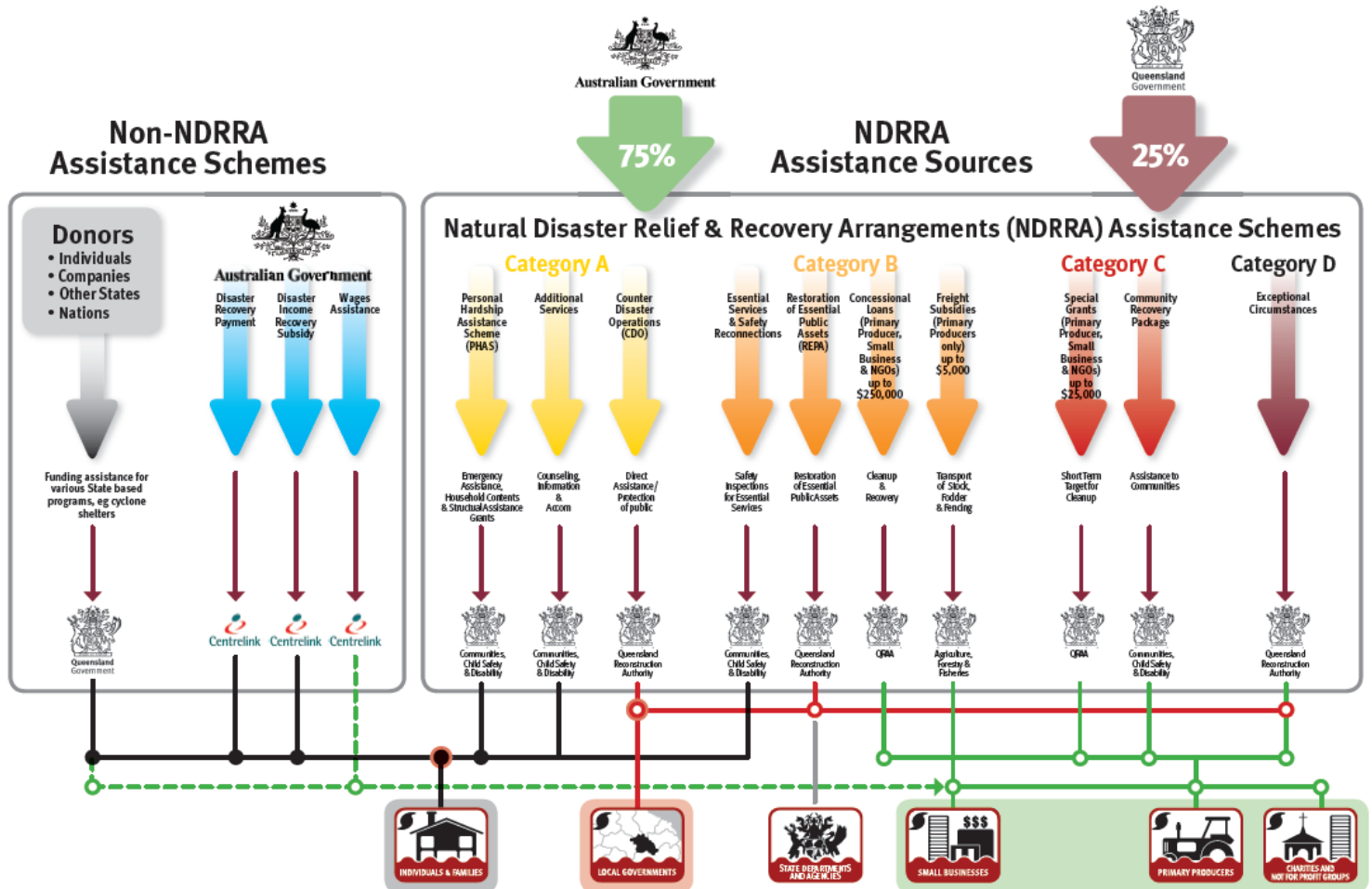


## 2.0 Disaster Assistance

### 2.1 Queensland Disaster Assistance Framework

The available Queensland Disaster Assistance schemes are separated between NDRRA (jointly funded by the Commonwealth and State governments) and Non-NDRRA funding schemes. The diagram below indicates the different elements of assistance available and how each element operates.

Figure 2.1.1 Queensland Disaster Assistance Framework



Whilst elements of the assistance schemes are delivered by other State agencies, all of the NDRRA assistance sources (and elements of the non-NDRRA assistance schemes) are administered by the Authority for historical and continuing disaster events in Queensland.

#### Disaster events managed by the Authority

The list of the activated disaster events managed by the Authority are set out in **Section 2.3** and can also be found on [www.disaster.qld.gov.au](http://www.disaster.qld.gov.au).

The maps opposite show the LGAs activated for relief measures under NDRRA for each event period under the Queensland Disaster Assistance Framework.

This report includes references to event periods described as follows:

- **2014 events:** Activated disaster events managed by the Authority which occurred in the financial year ended **30 June 2014**
- **2013 events:** Activated disaster events managed by the Authority which occurred in the financial year ended **30 June 2013**, including Tropical Cyclone Oswald and associated rainfall and flooding (January 2013)
- **2012 events:** Activated disaster events managed by the Authority which occurred in the financial year ended **30 June 2012**
- **2011 events:** Activated disaster events managed by the Authority which occurred in the financial year ended **30 June 2011**, including Tropical Cyclone Yasi and Queensland flooding (November 2010 to February 2011)
- **2009-2010 events:** Activated disaster events managed by the Authority which occurred prior to 30 June 2010
- **Combined Program:** relates to all the activated disaster event programs managed by the Authority.

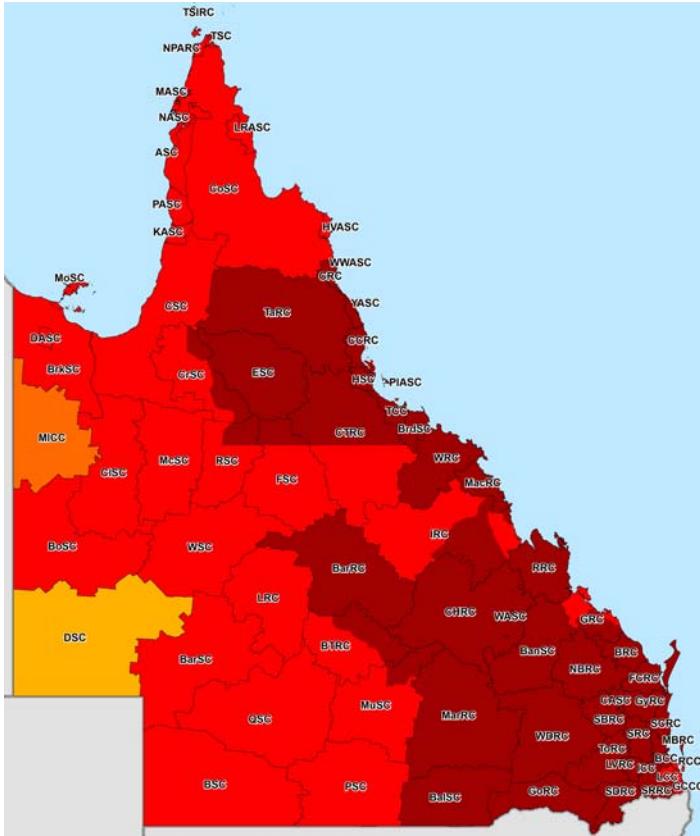


## 2.0 Disaster Assistance

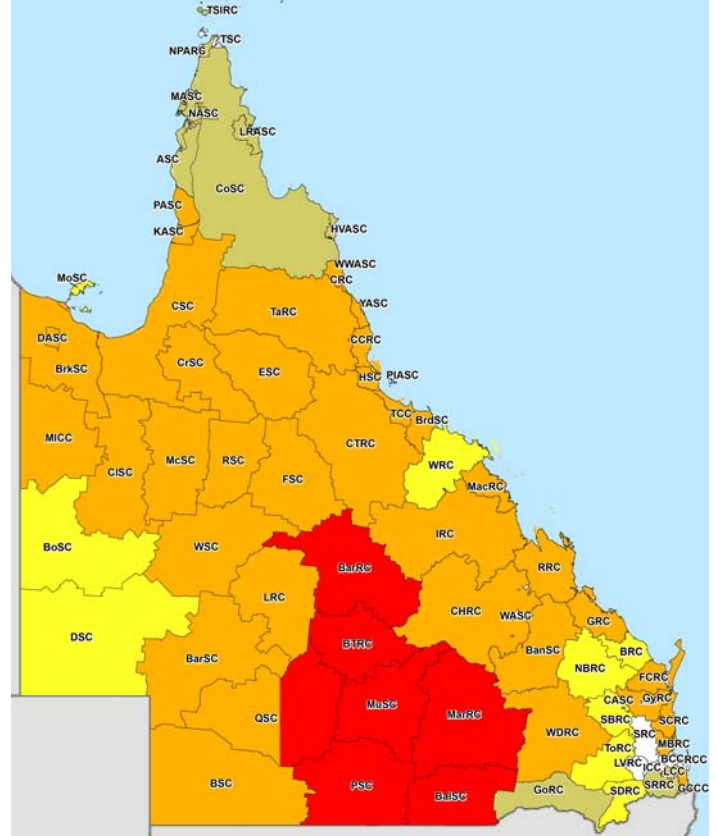
### 2.2 Disaster assistance by event period

The maps below show the LGAs activated for relief measures under NDRRA for each event period managed by the Authority under the Queensland Disaster Assistance Framework.

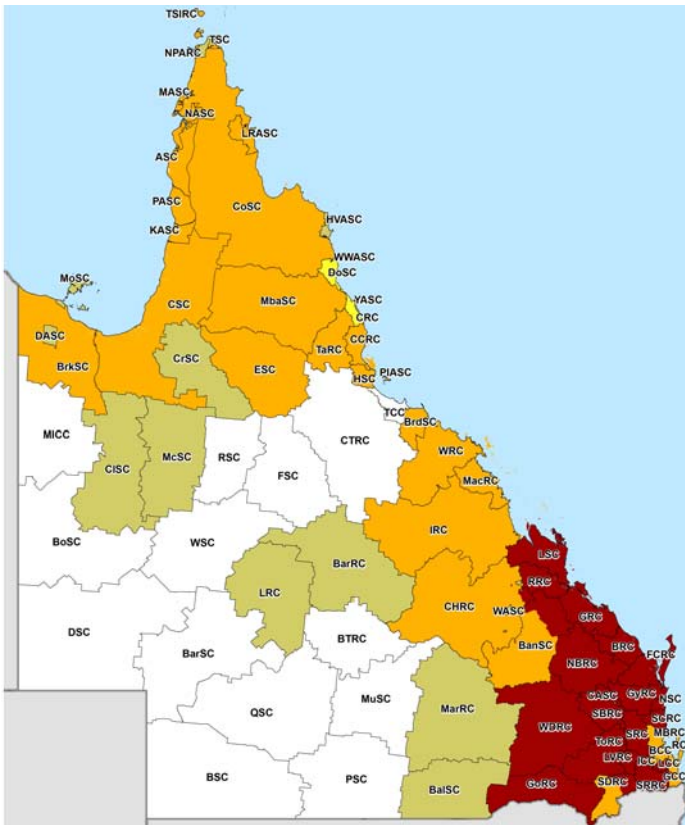
Map 1 - LGAs disaster activated under NDRRA for 2011 events



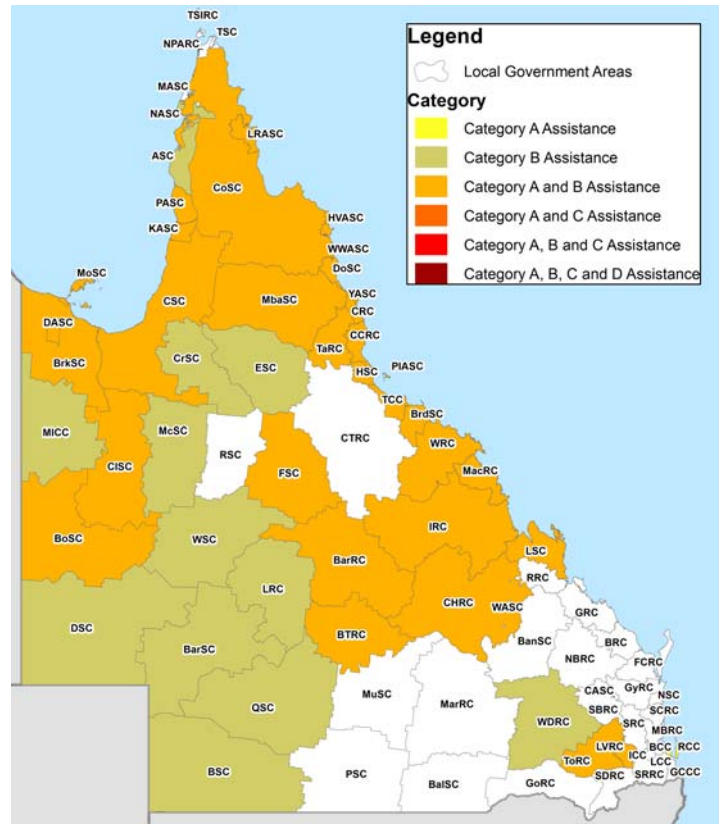
Map 2 - LGAs disaster activated under NDRRA for 2012 events



Map 3 - LGAs disaster activated under NDRRA for 2013 events



Map 4 - LGAs disaster activated under NDRRA for 2014 events



\* Refer Appendix A for glossary of LGA abbreviations

## 2.3 Events managed by the Authority

The Authority has responsibility to administer NDRRA relief measures for historical and continuing disaster events in Queensland. The Authority currently manages and coordinates the infrastructure reconstruction and recovery for 26 disaster events activated for NDRRA relief measures since the Authority's establishment in February 2011 and the remaining program of works for an additional 16 disaster events which occurred prior to the Authority's establishment.

There have been no new activations for NDRRA financial assistance since the last report.

### 2014 events:

- Tropical Cyclone Ita & Associated Rainfall & Flooding, 11-14 April 2014
- Tropical Cyclone Gillian—10 to 11 March 2014
- Central Coast & Southern Queensland Trough, 26-30 March 2014
- Central & Western Queensland Flooding & Rainfall, 18-28 February 2014
- North East Queensland Monsoonal Rainfall and Flooding - 7 to 9 February 2014
- Tropical Cyclone Fletcher, commencing 2 February 2014
- Far North Queensland Peninsula Flooding (27-31 January 2014)
- Tropical Cyclone Dylan, 31 January 2014
- North Stradbroke Island Fires, commencing 29 December 2013

### 2013 events:

- South West Queensland Wildfires, 21 December 2012
- Far Northern Queensland Bushfires, late October - December 2012
- Tropical Cyclone Oswald and Associated Rainfall and Flooding, 21-29 January 2013 \*
- Longreach Flood, 18 February 2013 #
- Central & Southern Queensland Low, 25 February - 5 March 2013 #

### 2012 events:

- Queensland Bushfires, August to October 2011
- Localised Heavy Rainfall Northern Queensland, October 2011 \*
- Southern Queensland Flooding, November to December 2011\*
- South East Queensland Heavy Rainfall and flooding, 23- 26 January 2012 \*
- Western Queensland Tropical Low, January - February 2012 \*
- Far Northern Queensland Tropical Low, 3-4 February 2012 \*
- North Coast Queensland Storms and flooding and East Coast Hybrid Low, 24 February - 7 March 2012 \*
- Northern and Far Northern Queensland Heavy Rainfall & flooding, 15 March 2012 \*
- East Coast Low, 22 March 2012 \*

### 2011 events:

- Queensland Flooding and Tropical Cyclones Tasha and Anthony, November 2010 to February 2011\*
- Severe Tropical Cyclone Yasi on 2 February 2011\*
- Queensland Monsoonal Flooding Event, 8 February 2011\*
- South West Flooding, April 2011\*

### 2007-2010 events managed by the Authority:

- South East and North Coast Queensland East Coast Low, August 2007
- South West Queensland storms and flooding, 23-30 November 2007
- Central Western Queensland storms and flooding, 22-30 December 2007
- South East Queensland East Coast Low, 27 December 2007 - 7 January 2008
- Queensland Monsoonal flooding, January 2008
- Queensland Monsoonal flooding, February March 2008
- South West Queensland flooding, June 2008
- Queensland storms and associated flooding, 16-22 November 2008
- Queensland Monsoonal flooding and Tropical Cyclone Charlotte and Ellie, January - February 2009
- South East Queensland Low, May 2009
- Queensland Bushfires, September – October 2009
- South West Flooding, 20 – 25 November 2009
- Northern, Central and South West Queensland Flooding, 22 December 2009 to 8 January 2010
- Queensland Monsoonal Flooding and Tropical Cyclones Olga, Neville, Ului and Paul, January to April 2010
- South West Queensland Low and Associated Flooding, September 2010
- 2010 South East Queensland Flooding, 9-12 October 2010.

The maps on the preceding page show the LGAs activated for relief measures under NDRRA for each event period managed by the Authority under the Queensland Disaster Assistance Framework.

\* Events covered under the National Partnership Agreement for Natural Disaster Recovery and Reconstruction (NPA) between the State and Commonwealth Government signed 8 February 2013 (NPA Events).

# Pending agreement to extend the NPA to include two additional 2013 events - Longreach Floods, 18 February 2013 and Central and Southern Queensland Low, 25 February - 5 March 2013.

## 2.4 Additional assistance measures

The State Government in conjunction with the Commonwealth have activated a range of jointly-funded Category C, Category D and other relief measures to alleviate distress due to the impact of Tropical Cyclone Oswald and the 2011 events. The measures are summarised below:

### 2.4.1 Betterment fund

On 8 February 2013, the Queensland Government signed the National Partnership Agreement (NPA) with the Commonwealth Government which recognised the need for a more streamlined process for the approval of Betterment funding. The Queensland Government announced a \$40 million commitment to Betterment funding which will match the Commonwealth Government contribution, resulting in the establishment of the \$80 million Betterment Fund.

In August 2013, the Betterment fund was extended beyond its original coverage of LGAs declared for NDRRA assistance for Tropical Cyclone Oswald to also cover LGAs declared for the two additional disaster events that occurred through to June 2013 (Longreach Flood (18 February 2013) and Central and Southern Queensland Low (25 February to 5 March 2013)). The Betterment fund is available for the restoration or replacement of essential public assets to a more disaster resilient standard than their pre-disaster standard. The intent of betterment is to increase the resilience of communities to natural disasters, while at the same time reducing future expenditure on asset restoration, reducing incidents, injuries and fatalities and improving asset utility during and after disaster events.

Where a damaged asset is approved as a betterment project, the normal cost of restoring or replacing the asset to its pre-disaster standard will continue to be funded under Category B of NDRRA assistance and the incremental cost to 'better' the asset to a more disaster-resilient standard will be financed from the Betterment fund. The status of the Betterment fund is set out in Section 3.7 of this report.

### 2.4.2 Other assistance measures

#### Tropical Cyclone Oswald

- **Community Recovery Package - \$5 million** - Funding for community development officers in the hardest hit communities of Bundaberg and North Burnett, support for mental health services and a flexible fund that assists communities to implement engagement and development activities.
- **Clean Up and Recovery program - \$10 million** - Program to assist primary producers to clear debris and restore fencing in the worst affected areas; to maintain workers while income generating activities are reduced and to clear debris from watercourse that poses a hazard to downstream infrastructure and activities.
- **Industry Recovery Officers - \$1.5 million** - Placement of Industry Recovery Officers to assist business and primary producers recover from flooding.
- **Enhanced concessional loans and grants** - Loans of up to \$650,000 (with a grant component of up to \$50,000) are available to applicants that have suffered extreme damage such that the existing concessional loan and recovery grants under NDRRA category B and C are insufficient to support recovery.
- **Environmental Recovery program - \$10 million\*** - Program to fund existing programs to conduct flood specific clean up and soil conservation work following the 2013 flooding.
- **Rural Financial Counselling Services - \$1.5 million\*** - Provision of financial planning advice for rural businesses and primary producers to assist in the recovery of local economies following the disaster.
- **Other measures - \$4.9 million** to fund dredging works to restore Bundaberg Port to its pre-2013 flood clearance depths; and **\$900,000** to assist Bundaberg Regional Council meet the cost of recovery works for community parks and gardens.

#### 2011 events

- **Queensland Local Council Package - \$315 million** - Funding to help local councils repair utilities and infrastructure, and support their efforts in recovering from the floods and Cyclone Yasi. The package comprises two components: \$265 million to fast-track the repair of damaged infrastructure, including the Strengthening Grantham project, Brisbane ferry terminals and Riverwalk; and \$50 million to contribute to regional and remote councils employing people to perform important clean-up and repair work.
- **Cassowary Coast Support Package - \$15 million** - Funding to restore vital council infrastructure and restore natural vegetation and beach damage in the Cassowary Coast region. Specifically, the Support Package provides for the repair of Dunk Island Jetty, the repair of Clump Point Jetty and the restoration of Cardwell beach foreshore and its natural vegetation.
- **Exceptional Disaster Assistance Scheme** - Concessional interest loans of up to \$650,000, with grant component of up to \$50,000, to eligible businesses, primary producers and not-for-profit organisations that suffered extreme damage.

In addition, the State Government and Commonwealth have agreed to an extended Day Labour Trial, which enables councils to deliver restoration works with their own workforce on condition that they provide evidence of savings in both time and cost.

\* Non-NDRRA measures funded 50% by the State and 50% by the Commonwealth; Commonwealth share is being delivered directly through existing Commonwealth programs.

**Section three:**

# **Program Status**



### 3.0 Program Status

#### 3.1 Recent developments

The timeframe for councils and state agencies to complete much of the works from the devastating floods and cyclones of early 2011 and the series of events which impacted the state in the summer of 2011-12 passed on 30 June 2014 and the Authority is currently undertaking the considerable task to close out and acquit the massive volume of works completed prior to 30 June 2014 on the 2011, 2012 and 2013 events for acquittal in the 2013-14 Commonwealth Claim.

Whilst the delivery phase of much of the 2011 and 2012 event programs has now passed, the Authority’s focus on delivery remains as there is still a significant program of works from Tropical Cyclone Oswald and other events of 2013 and 2014 to manage through the damage assessment, submission preparation and approval and delivery phases.

#### 3.2 Combined program status

Following completion of the September 2014 NDRRA estimates review process, the estimated program of works for all events actively managed by the Authority (2009 to 2014) is \$13.3 billion.

The estimated cost of the damage from the 2014 Events is \$455 million, the damage from the 2013 Events is estimated to be \$2.0 billion and the cost of the 2011 and 2012 Events is estimated to be \$6.8 billion and \$1.6 billion respectively. The cost of the 2009-10 Events managed by the Authority has been finalised at \$2.4 billion following acquittal of the remaining works from these programs in the 2012-13 Commonwealth Claim.

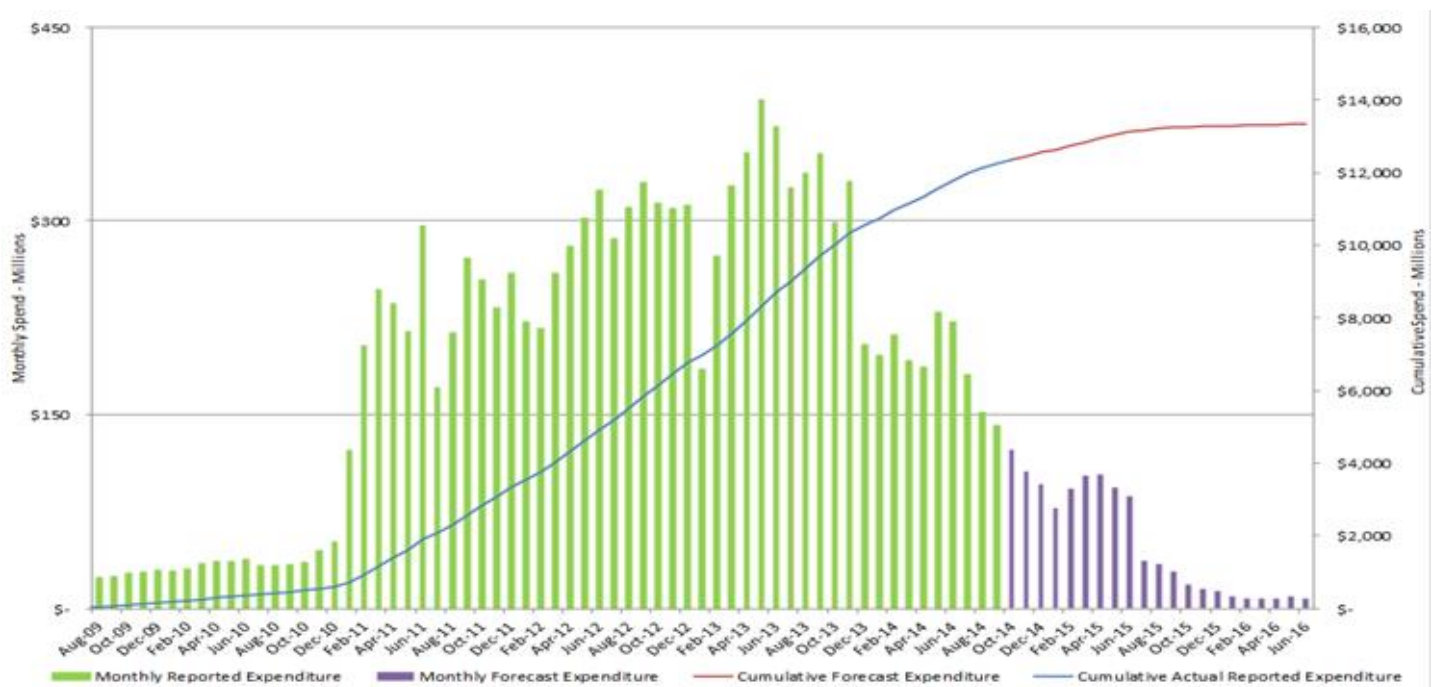
Since the last report, the combined program of works for all events managed by the Authority has progressed as follows:

- a cumulative value of \$18.1 billion in submissions have been received by the Authority to 1 December 2014, representing an increase of \$83 million since last month
- a cumulative total of \$17.6 billion has been processed by the Authority to 1 December 2014, representing an increase of \$116 million since last month
- a cumulative value of \$12.35 billion of the revised \$13.33 billion works program (2009 to 2014) has been reported to the Authority as being in progress or delivered by delivery agents as at 31 October 2014.

Figure 3.2.1 Combined progress as at 31 October 2014



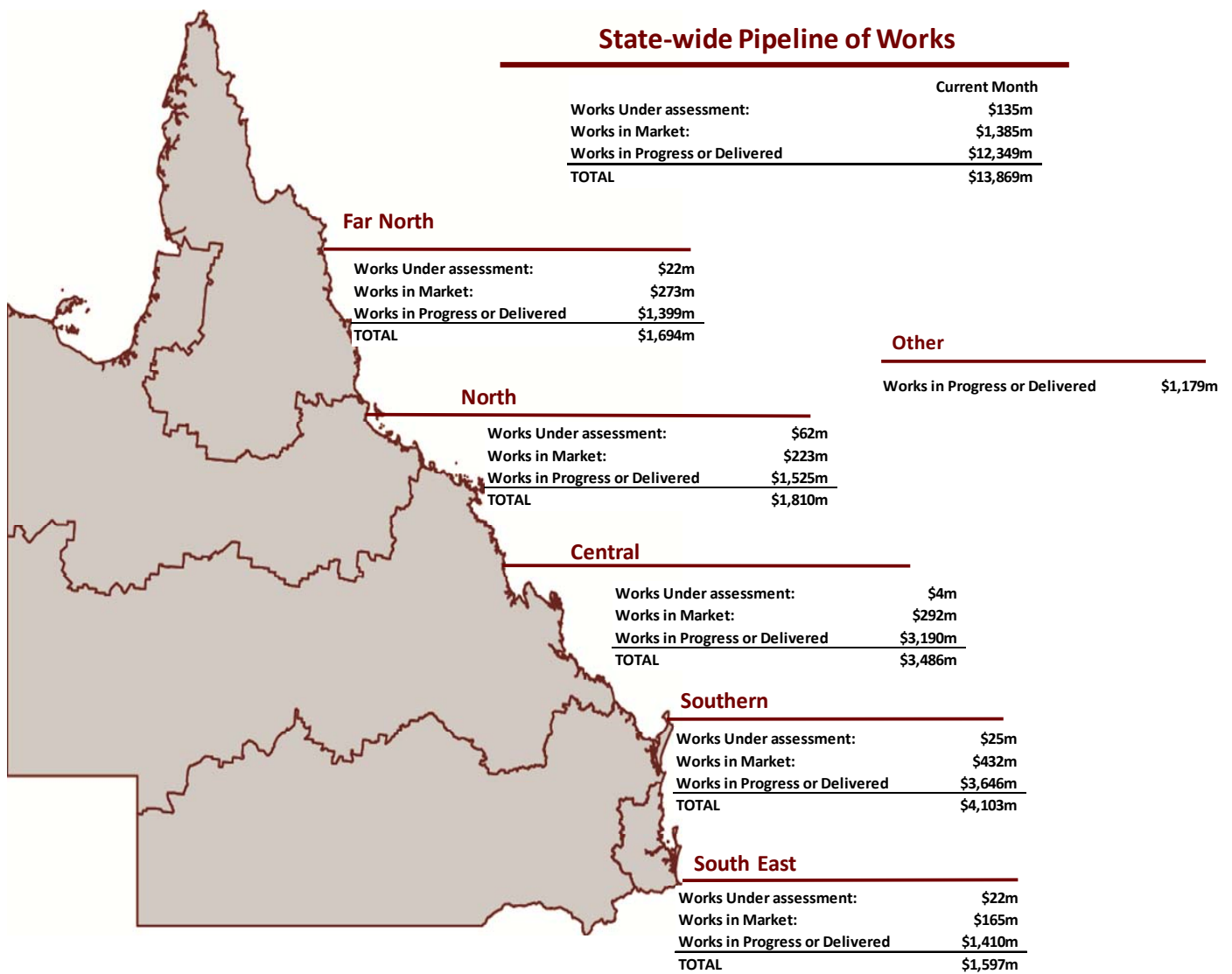
#### 3.3 Program of works expenditure



Source: the Authority - September 2014 NDRRA Estimates Review & 1 December 2014

### 3.4 State-wide pipeline of works

Following completion of the September 2014 NDRRA estimates review process, the Pipeline of works for events actively managed by the Authority (2009 to 2014) has a revised estimated program value of \$13.33 billion, the status of which is set out below.



Source: DTMR at 31 October 2014; & Authority at 1 December 2014

**Note:**

1. Works Under Assessment and Works in Market represents data as at 31 October 2014 (DTMR) and 1 December 2014 (LGAs and Other). Works in Progress or Delivered represents spend by delivery agents to 31 October 2014 as reported to the Authority at 1 December 2014. Additional works have been conducted but are yet to be reported to the Authority
2. Other encompasses SDAs other than DTMR as well as the 2011 and 2013 Other Assistance.

**Pipeline of Works Definitions**

Stage	Description
Works under Assessment	Applications for packages which are currently under assessment by the Authority or are awaiting additional information from the applicant.
Works In Market	Estimate of spend remaining on works in progress and packages which have been approved by the Authority and are in the tender or contract process.
Works in Progress or Delivered	Expenditure as reported to the Authority on packages in progress or delivered.

Source: DTMR at 31 October 2014; and the Authority at 1 December 2014

### 3.5 State-controlled roads and highways

DTMR's Transport Network Reconstruction Program (TNRP) manages the recovery and reconstruction of Queensland's integrated transport system to reconnect Queensland communities and economies following the damage from natural disaster events in 2010, 2011, 2012 and 2013.

DTMR's reconstruction program as a result of the natural disasters of 2014 is being scoped and will be provided in future reports.

The transport system includes state-controlled roads, ports, navigation aids and the rail network.

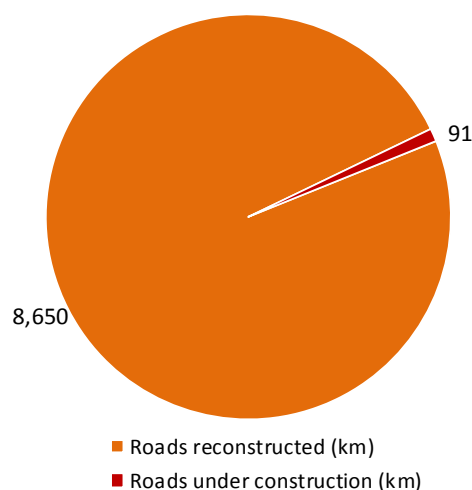
#### The current state of activity:

- **Roads** – \$6.2 billion of projects have been completed for both recovery and reconstruction works for works resulting from the disaster periods of 2010 to 2014 and \$245 million of reconstruction works are currently underway. Of the 8,772km of roads which DTMR plans to reconstruct following damage from the 2010 to 2013 natural disaster events\*, 8,650km had been completed to 31 October 2014 and a further 91km of road is under construction on active works contracts. *See Figure 3.6.1 TNRP Summary map.*
- **Rail** – 3,100km (43%) of Queensland Rail lines were closed or had limited access due to the natural disaster events in early 2013, and all have been recovered.
- **Maritime** – repairs have been required to navigation aids, jetties and other boating infrastructure following natural disasters from 2010 to 2013. The events of 2013 affected seven ports (all of which have since been reopened without restriction) and damaged or destroyed 348 aids to navigation, of which 347 have since been recovered and 1 temporarily fixed.

#### Key achievements:

- During October 2014, DTMR expended approximately \$78 million on reconstruction works across the State arising from the natural disaster events of 2012, 2013 and 2014. DTMR has until 31 December 2014 to complete its remaining 2012 event works, until 30 June 2015 to complete its 2013 program and until 30 June 2016 to complete its 2014 programs of works.
- The cumulative spend on reconstruction of the transport network to 31 October 2014 is more than \$6.5 billion for works resulting from the 2010 to 2014 disaster periods.
- There was 122km of damaged roads reconstructed in October 2014 bringing the total reconstructed since the program commenced to 8,650km (99%) of the total damaged roads which DTMR plans to reconstruct from the 2010 to 2013 events\*.
- With the majority of works completed or under construction, only a small number of project valued at around \$1 million commenced in October 2014 including works on five 2013 event projects in the Fitzroy region.
- Construction was completed on 47 projects valued at approximately \$52 million in October 2014 including works on the New England Highway in the Darling Downs region; 19 projects from the 2013 event in the Fitzroy region; works on the Wills Developmental Road (Julia Creek–Burketown) in the North West region; 10 projects in the Far North Queensland region; works on the Brisbane–Woodford Road, Maleny–Montville Road and Esk–Hampton Road in the North Coast district and the final eight projects in DTMR's Metropolitan district.

Fig.3.6.1 Roads damaged/reconstructed - 2010 to 2013 events\*

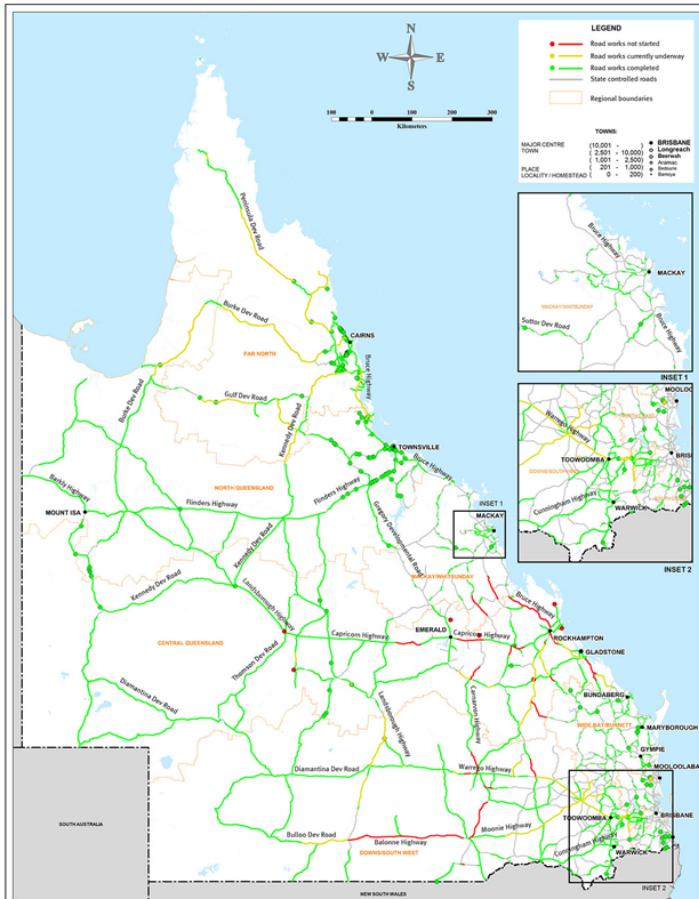


Above: Warrego Highway – sealing work between Dalby and Miles

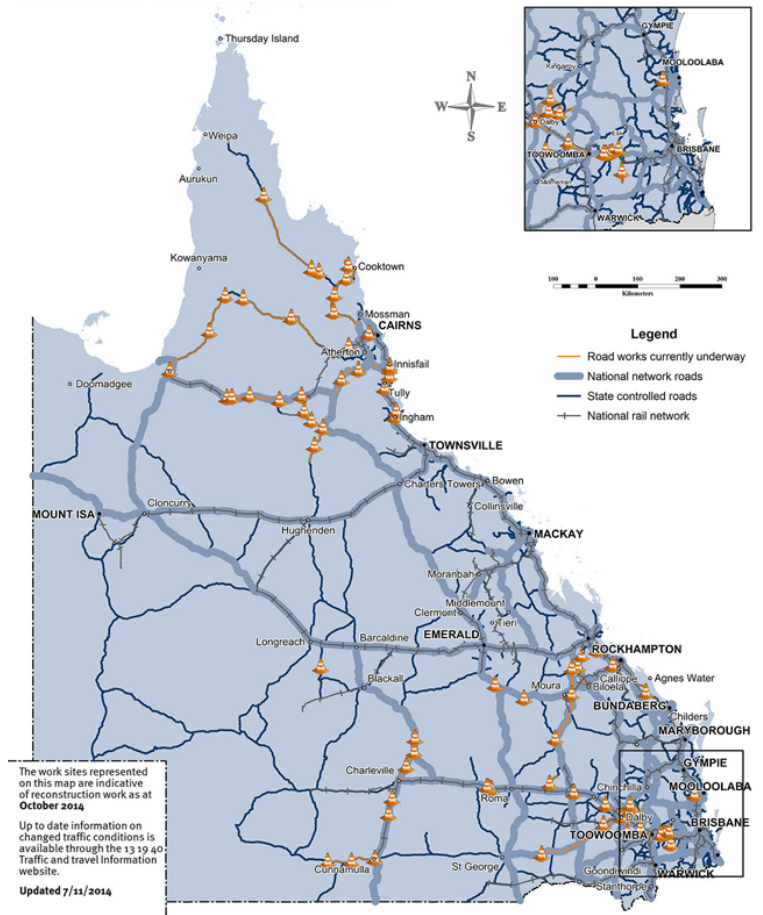
\* reported kms to reconstruct represent works from damage caused by events in 2010, 2011, 2012 and 2013. Reporting on scope of reconstruction works from 2014 events will be provided in future reports following finalisation of TMR's reconstruction program for 2014 events.

(Source: DTMR, 31 October 2014)

**Fig.3.5.2 TNRP summary of reconstruction works to date - October 2014**



**Fig 3.5.3 TNRP reconstruction work sites - October 2014**



(Source: DTMR 31 October 2014)

### 3.6 Betterment fund status

The \$80 million Betterment fund is a Category D relief measure available to LGAs that have been declared for NDRRA assistance for the flood, storm and cyclone disaster events that occurred in Queensland in early 2013 for the restoration or replacement of essential public assets to a more disaster resilient standard than their pre-disaster standard.

The Betterment Fund was announced in February 2013 following Tropical Cyclone Oswald which caused damage to many of the assets which had been repeatedly damaged and restored from earlier disaster events. Correspondence was received from the Commonwealth in August 2013 agreeing to an extension of the Betterment fund to also cover LGAs declared for the two additional disaster events that occurred after Oswald through to June 2013 - Longreach Flood (18 February 2013) and Central and Southern Queensland Low (25 February to 5 March 2013).

#### Status

Expressions of Interest (EOI) were received by the Authority from 48 councils with approximately \$1 billion worth of Betterment projects to improve the resilience of infrastructure to natural disasters. Under the Betterment Framework, in addition to the normal NDRRA submission assessment process, the Authority considered the financial and non-financial benefits of the betterment proposal such as possible prior damage, loss of availability and its impact on economic or social factors of the community.

The Betterment Fund has now been allocated to 233 approved projects across 35 LGAs. These projects comprise Category B NDRRA funding for the restoration component of the works, a capped allocation from the Betterment fund for betterment works and Council contributions. Betterment funding is allocated on the basis of the estimated cost of the approved projects. Should the betterment component of a project be delivered for a cost below the capped allocation, then the savings will be returned to the Betterment Fund for allocation to other eligible projects.

To date, more than 190 of the 233 approved projects have commenced delivery and more than 85 projects have been reported as practically complete.

A report on the recent completion of the Mapoon-Weipa Access Road betterment project is provided in Section 4.



## **Section four: Progress Reports**



## 4.1 Iconic projects in reconstructing Queensland\*

Project	Value (\$m)	Description	Status
<b>BCC Ferry Terminals</b> (Cat D)	\$73	<p>The January 2011 floods damaged all of Brisbane City Council's CityCat and City Ferry terminals. To return service as soon as possible, Council replaced the seriously damaged terminals with temporary terminals. Seven temporary terminals were built to pre-flood standards meaning that in the event of another major flood, it was likely it would need to be rebuilt again.</p> <p>Works to replace the terminals with more resilient, permanent structures are being delivered as part of a special (Category D) funding package for Brisbane City Council. The design of the new terminals integrates technical innovation, improved accessibility for all passengers and flood resilience.</p> <p>The replacement ferry terminals are located at The University of Queensland (St Lucia), Regatta (Toowong), North Quay (CBD), Maritime Museum (South Brisbane), QUT Gardens Point (CBD), Holman Street (Kangaroo Point), Sydney Street (New Farm) and Dutton Park.</p>	<p>In April 2014, Brisbane City Council announced McConnell Dowell Constructors as the successful tenderer to complete upgrades of the Ferry terminals.</p> <p>Works have commenced on the first four ferry terminal projects.</p> <p>Piling works at <b>QUT Gardens Points</b> started in June 2014. All marine piles are now complete, works on the marine access bridge is around 80% complete and landside works are 90% complete. The Brisbane City Council's offsite prefabrication works for the pontoon and gangway is ongoing. Completion of the terminal is expected in February 2015, weather permitting.</p> <p>Construction of the new <b>University of Queensland</b> CityCat terminal began in early July 2014 and all marine piles are now complete. Fabrication of the pontoon and gangway is underway and landside works are approximately 40% complete progressed. Completion of the terminal is expected in March 2015, weather permitting.</p> <p>Piling works on the <b>Maritime Museum</b> ferry terminal started in October 2014. All but one of the marine piles have been completed and land based works commenced in late October. The final pile will be installed and other upgrade works will commence during the terminal closure period, currently scheduled for March 2015.</p> <p>Fabrication of the pontoon and gangway for the <b>Regatta</b> ferry terminal commenced in October 2014. All marine piles are complete and construction of the pier superstructure has commenced. The existing temporary terminal closed on 20 October 2014 and will remain closed while the upgrade is completed. The new terminal is expected to open in March 2015, weather permitting.</p> <p>During November, land-based civil works commenced on the <b>Holman Street</b> terminal site. Fabrication of the gangway for the terminal is also underway.</p> <p>Fabrication of the gangways and pontoons has commenced for the <b>North Quay</b> and <b>Sydney Street</b> terminals, with on-site construction of both terminals planned to commence in early 2015.</p> <p>Completion of all ferry terminal works IS required by mid-2015.</p>



Gangway portal and marine works underway at University of Queensland ferry terminal

\* Iconic projects represent projects that may be complex or of great significance to the local community.

## 4.1 Iconic projects in reconstructing Queensland (continued)

Project	Value (\$m)	Description	Status
<b>Burke Developmental Road (Normanton to Dimbulah)</b>	<b>\$3.9m</b>	<p>During the Tropical Cyclone Oswald event in 2013, the Burke Developmental Road pavement and foundations had considerable saturation, which resulted in a loss of pavement strength.</p> <p>Closure of the road would have prevented resupply of townships and left remote communities cut off.</p>	<p>Detailed design of works was completed in May 2014.</p> <p>The contract was awarded to Carpentaria Shire Council in June 2014.</p> <p>Construction commenced in September 2014 and is due for completion mid-November 2014.</p>



*Pink grader to raise breast cancer awareness working on Burke Developmental*




*Burke Developmental Road – grading in progress*

<b>Warrego Highway (Jondaryan to Dalby)</b>	<b>\$41m</b>	<p>During the Tropical Cyclone Oswald natural disaster event in January 2013, the Warrego Highway pavement and foundations were saturated, resulting in structural weakening of the asset.</p> <p>This section of the road is built on predominantly flat terrain, which makes it vulnerable to water ingress through the pavement and foundations as adjacent table drains remain full for several weeks during and after these types of weather events.</p> <p>Long lengths of pavement failures across the full pavement width resulted along many section of the Highway.</p>	<p>The road construction contract was awarded to FK Gardner &amp; Sons Group of Toowoomba.</p> <p>Construction started in July 2014 and works are currently under way in Bowenville, Jondaryan and on the eastern side of Dalby.</p> <p>Construction is expected to be completed by the end of November 2014, weather permitting.</p>
---	--------------	---	---



*Warrego Highway works - traffic switched onto newly reconstructed section at Jondaryan.*

## 4.1 Iconic projects in reconstructing Queensland (continued)

Project	Value (\$m)	Description	Status
<b>Bajool-Port Alma Road</b>	<b>\$1.7m</b>	<p>The Bajool–Port Alma Road links Bajool (on the Bruce Highway) to Port Alma and is vital in providing local salt mines with access to port facilities and a key state highway.</p> <p>Following Tropical Cyclone Oswald in January 2013, the Bajool area experienced 780mm of rainfall over a five-day period.</p> <p>The rainfall and subsequent flooding of the mouth of the Fitzroy River caused high tides to saturate major areas of the Bajool–Port Alma Road. This resulted in subsequent extensive pavement failures at various locations including potholing, rutting, shoving and longitudinal and crocodile cracking.</p> <p>Reconstruction works will be undertaken on Bajool–Port Alma Road. The main construction activities will include pavement repairs and repairs to existing drainage structures.</p>	<p>The tender for the works was awarded to RoadTek in May 2014.</p> <p>Construction commenced in August and continued in October 2014. Practical completion is expected by the first week in November 2014, weather permitting.</p>  <p><i>Bajool–Port Alma Road – completed asphaltting works on Eight Mile Creek Weir</i></p>

## 4.2 Program spotlights

### November 2014 Brisbane Storm Assisting with recovery efforts



The severe storm that hit on the afternoon of 27 November 2014 left a path of destruction across Brisbane and areas to the west and has been described as one of the worst to hit the city in decades.

The Bureau of Meteorology reported that two storm cells had joined to create a super cell, producing torrential rain, wind gusts of more than 140 km per hour and large hail stones that battered homes, cars, schools and commercial property. Power was cut to approximately 83,000 customers, disrupted public transport and forced the early closure of some schools for the Christmas break.

The Australian Defence Force supplemented the efforts of SES volunteers from around Queensland in repairing roofs and helping recovery efforts in the immediate aftermath of the storm. Queensland Fire and Emergency Services (QFES), with assistance from the Authority, also deployed rapidly to undertake damage assessments across 46 affected suburbs.

The Authority provided eight damage assessment officers to supplement the QFES teams in capturing data, mapping support to help identify the areas with the highest need for assistance and regular information updates to the Queensland Disaster Management Committee.

Together with QFES, the damage assessment teams undertook more than 3300 damage assessments in the three days following the storm, covering an area of approximately 250 square kms.

*Left: Damage assessment underway in Brisbane following the November 2014 storm*



## 4.2 Program spotlights (continued)



*Damage to (top) and following reconstruction works (bottom) on Heatleys Parade bridge which was repaired using Townsville City Council's day labour workforce.*

### Townsville City Council Delivering with day labour on Heatleys Parade Bridge

In utilising its internal labour force in repairing the Heatleys Parade Bridge, Townsville City Council has returned significant savings in terms of cost, time and quality.

High flow velocities in the flooding creek in March 2012 saw the embankments supporting the bridge abutment severely compromised. Prompt action to prevent further damage was necessary as the bridge is a critical link for Townsville's road network and the only connection into the suburb of Rowes Bay and Pallarenda.

Repairs to the existing abutment protection of the bridge were initially estimated at more than \$600,000 but by using its own internal labour source, Council saved an estimated 75 per cent on labour costs alone. By Council's workforce undertaking the bridge repairs they also reduced the time lapse between damage and construction. If Council had used the managing contractor model, the reconstruction works would have gone through the usual tender application, appraisal, and scheduling of works, adding to the length of time before repairs could begin.

Council's workforce had previously constructed similar projects under the NDRRA program and for Council's maintenance program. By utilising its workforce, Council was able to take advantage of their in-house expertise, resulting in large cost reductions in comparison to tenders received from external contractors who were unfamiliar with local conditions. Council began construction on 1 June 2013 and completed these and other associated NDRRA works by February 2014.

### DTMR Landslip works restore Lamington National Park Road

Lamington National Park Road passes 35km through the national park from Canungra, narrowing to one-way only sections and winding through numerous hairpin bends.

After ex-Tropical Cyclone Oswald hit the Gold Coast in January 2013, the clean-up revealed six landslips on the road just below the start of the national park. The slips undermined the road's edge with tension cracks forming across sections of the road.

A seventh site funded through the Queensland Transport and Roads Investment Program (QTRIP) was packaged with the six landslip projects for re-construction. The project team engaged local stakeholders early to enlist support and ensure they were informed before the construction contractor, Fulton Hogan, moved in. In March 2014, the drill rig crept up the mountain road and works got under way.

The design solution for four of the slips was to install soil nails, with gabion walls constructed at the other three landslips. With the road only just wide enough for the massive drill rig that would install the soil nails, the only way to complete these works was under a full road closure. Closing the road during the day wasn't an option, so soil nail installation was done at night. This meant that people living in the homes along the road, and staff of the nearby rainforest retreat needed to pass through the work zone by 7pm Sunday to Thursday, as the road wouldn't reopen to traffic until 5am the next day. This required careful planning, but was facilitated successfully by the project team.

By 6am each weekday, the day works to install gabion walls, shotcrete the batters and repair drainage continued. To ensure the works were completed in the shortest possible timeframe, multiple sites were constructed at the same time, with successive sets of mobile traffic signals directing motorists one way at a time.

By April, all the soil nails were installed and the night works came to an end. All other works were completed by June 2014.



*Shotcreting the batter after the installation*



*Night works to install soil nails near a one-way section of the road*

## 4.2 Program spotlights (continued)

### Mapoon Aboriginal Shire Council Weipa–Mapoon Access Road betterment project

After being reformed and resheeted following extensive damage during the cyclone events of 2010, Weipa-Mapoon Access Road was once again damaged in 2013 as a result of Tropical Cyclone Oswald.

The road is an unsealed gravel road providing the only access for the Mapoon community to Weipa and the Peninsula Developmental Road.

Council has recently completed a betterment project intended to improve the utility of the road and enable the community to safely evacuate in major rainfall and flood events, improve access for emergency services from Weipa and facilitate access to supplies and essential services during disaster events and in the recovery phase.

Council's betterment works involved drainage works and application of a two-coat bitumen seal to approximately 8km of the road. Existing sections of the road had already been sealed and have shown to be more resilient to damage.

The total cost of the project was approximately \$1.9 million, with approximately \$975,00 allocated from the Betterment fund. The works commenced in May 2014 and were completed in September 2014.

*Damage to Weipa-Mapoon Access Road following Tropical Cyclone Oswald (top); and following completion of sealing works as part of Council's betterment project (bottom)*



### DTMR

#### Reconstruction projects win at Queensland Earth Awards

Contractors Mcllwain Civil Engineering and FK Gardner and Sons (FKG) have won Queensland Civil Contractors Federation 2014 Earth Awards for their work across two major flood reconstruction projects in DTMR's Downs South West region.

Mcllwain Civil won the Category 2 Award (projects valued from \$1 million to \$5 million) for the stabilisation of Spring Creek Road Embankment.

Spring Creek Road is a popular route for tourists visiting the Queen Mary Falls near Killarney. However, the road pavements and road embankments on steep mountain sides were damaged by rain associated with the 2011 flood. Mcllwain Civil presented DTMR with an option to stabilise the embankments using an A-frame arrangement of grout-injected micro-piles. This innovative solution reduced the number of predicted road closures, the amount of spoil and vegetation removed, and created considerable cost savings.

FKG won the Category 4 Award (projects valued from \$20 million to \$75 million) for delivering flood reconstruction works on the Gore Highway using foam bitumen stabilisation. The flood reconstruction works were completed in March 2014 after a 15-month construction period.

The Civil Contractors Federation annual Earth Awards recognise construction and environmental excellence in civil construction across Australia. It has become one of the most prestigious awards in the civil infrastructure industry.

Both contractors successfully delivered on time.

*Left:  
Installation of micro-piles (top) and the finished rebuilt surface on Spring Creek Road (middle);  
Completed foam bitumen section on the Gore Highway at Brookstead (bottom)*

**Section five:  
Communications**



## 5.0 Communications

The Authority is focused on building stakeholder confidence in the reconstruction by ensuring consistent and regular communication of public information.

### 5.1 Communicating progress

#### Media analysis

There has been a total of 199 media items in November 2014 (93 print – 47%, 23 TV – 12%, 83 radio – 41%), which reached a cumulative audience of over 4.3 million people, with the focus this month being on council recovery, disaster season preparedness, and proposed changes to NDRRA funding.

There were media mentions for regions recovering and rebuilding from natural disasters across Queensland, including articles in the North Queensland Register, Queensland Times, Bundaberg News Mail, High Country Herald, Toowoomba Chronicle, Innisfail Advocate, Tully Times, Gympie Times, Cairns Post, and the Fassifern Guardian; TV coverage on the WIN and Seven networks throughout the State; and radio mentions, including on ABC Radio Queensland, Radio National, 4BC, 4KQ, 4CA Cairns, Zinc FM Mt Isa, and Radio 4KZ Innisfail.

The opening of Burdekin Shire Council's new cyclone shelter in Ayr received coverage on local radio together with articles featuring in The Ayr Advocate and the North Queensland Register. Flood mitigation works in Toowoomba also received coverage with articles in the Toowoomba Chronicle and High Country Herald, and radio coverage on 4GR Toowoomba and ABC Southern Queensland.

#### Engagement activities

In November, **Minister for Local Government, Community Recovery and Resilience David Crisafulli** travelled to Lockyer Valley to inspect Betterment works completed at Clarks Bridge in Thornton.

**Minister Crisafulli** also visited North Bundaberg to inspect the Technology Park levee and the completed Burnett River Stabilisation Project. From 29-30 November, **Minister Crisafulli** and the Authority's **Chief Executive Officer Frankie Carroll** attended Community Cabinet in Mareeba.

**The Minister** also attended the opening of the Burdekin Shire Council's cyclone shelter ahead of the impending storm season.

Specialist teams from the Authority also deployed to assist the QFES with damage assessments following the severe storm that hit Brisbane and surrounding areas in late November 2014.

#### Communications

There are a number of methods available to the public to communicate with the Authority.

The Authority's website provides information to the public and continues to be enhanced with ongoing updates, including information about Betterment projects. There has been a large number of visits to the website since it was launched on 18 February 2011. At 30 November 2014, total website visits amounted to 446,659 - an increase of 1% since last month. *(See Figure 5.1.1)*

In November, the Authority received an additional 19 calls to its dedicated hotline and 320 additional pieces of written correspondence were received. *(See Figure 5.1.2)*

Fig. 5.1.1 Website traffic

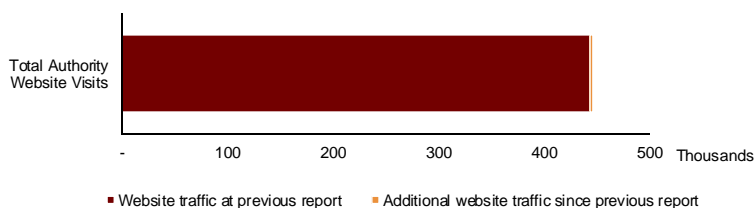
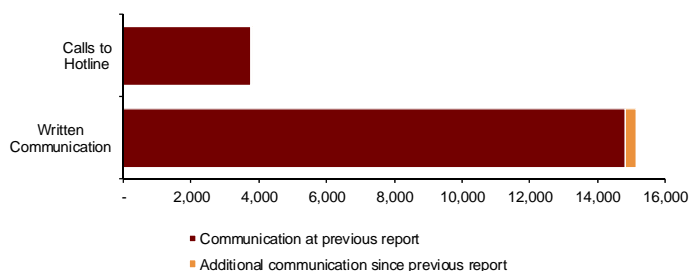


Fig. 5.1.2 Communications



(Source: the Authority at 30 November 2014)



### Flood-hit park rebuilt to a better standard

THE section of the Burnett River bank damaged by the 2011 floods has been given a new lease of life.

Work has been completed on the former site of Midtown Marina, which now boasts seating and an outdoor space for the community to enjoy.

Community Recovery and Resilience Minister David Crisafulli yesterday said the park was a special place for the community.

"I didn't want to see this area filled in or just repaired - it needed to be more than that," Mr Crisafulli said.

"I wanted to see it not restored but taken to the next level."

"The people of this part of the world have been absolutely hit by Mother Nature too often and it has dented the psyche of the community, which does not mean that the community has not just stood up but stood up with pride."

Bundaberg Regional Council project manager Jim Whitaker said the park was to happen again in the future.



WATCH THE VIDEO  
[www.malforman.com.au](http://www.malforman.com.au)

WORK COMPLETE: Police Inspector Kev Gutteridge, Mayor Mal Forman and Community Recovery and Resilience Minister David Crisafulli at the new park yesterday.

PHOTO: MAL FLEET/BUNDABERG

### More landslip stabilisation work at Bingil Bay

Landslip stabilisation work was due to begin today (Thursday) on Alexander Drive at Bingil Bay.

Casowary Coast Regional Council Mayor Bill Shannon said the works were part of Council's cyclone recovery program in relation to Cyclone Oswald and associated rainfall.

The work is being funded by the State and Federal Government through the Natural Disaster Relief and Recovery Arrangements (NDRRA).

Traffic will be reduced to one lane in a section of Alexander Drive south of the Constans Street intersection.

Council's Transport Infrastructure portfolio holder Councillor Ian Rule said contractors would be working in two areas, close to earlier rectification sites, and installing stabilisation work with

stumps and setting on non-vertical slopes above the road.

He said the work was necessary to stabilise the bank, and followed similar action over several years on sections of Alexander Drive.

"It also follows road closures caused by landslides after weather events."

The new landslip stabilisation works are expected to take from two weeks to a month, depending on the weather.

"Traffic lights will be installed so vehicles can stand one lane of the road," Cr Rule said.

"We apologise for the inconvenience to those who use the road."

"While the work will be undertaken as quickly as possible it is dependent on good weather and other factors so we are asking for people's patience while this project is under way."

Tully Times, 13 November 2014

### Anduramba road works due to start in February

Work on the \$7 million reconstruction of Middle Road at Anduramba is scheduled to start in February.

Toowoomba Regional Council Infrastructure general manager Mike Brady said last week's council meeting the design for the new road was being completed, and the work would soon be put to tender.

Mr Brady said he expected a start on construction in February.

Under the terms of the government funding for the work, the reconstruction work on Middle Road has to be completed by the end of June 2015.

The State Government has transferred funds that were allocated to the reconstruction of the Anduramba Range Road following two major flood washouts, so the rebuilding of Middle Road is ahead.

Anduramba Range Road has been closed permanently at the washed out section of road where it descends from Blue Haze towards the Anduramba Hill. Traffic has been diverted to the Bluff Road, and onto Middle Road.

However, Bluff Road has also been closed for repairs.

Construction work has been progressing since the beginning of November. The rebuilding work includes gravel re-sheeting, shoulder works and drainage repairs to complement the works done straight after the 2011 flood event. It is aimed at significantly improving safety and reliability for motorists.

The project required the full closure of the road and those travelling between Toowoomba and Cross Hills have had to use Main Creek Road.

The project is expected to be completed by late November. These works are being funded by the Natural Disaster Relief and Recovery Arrangements (NDRRA) with 75 per cent of funding coming from the federal government and 25 per cent from the State Government.

High Country Herald, 25 November 2014

### Council's flood basin and mitigation trumpeted

ONE of Toowoomba Regional Council's major achievements in 2013-14 was the completion of NDRRA flood restoration work totalling \$62 million, this year's annual report has revealed.

The flood recovery program was undertaken to fix infrastructure damaged in the 2011 floods.

With the memories of the devastating 2011 floods still fresh in people's minds, CEO Brian Pilgoun said flood mitigation would remain a priority.

"The next financial year will see the completion of two major detention basins where we have planned for improved public spaces as a result of these projects," he said.

Other mitigation works undertaken include the completion of Clewley Park Detention Basin and works on the West Creek Channel, Goggs St drainage, Dent St rail bridge and Russell St embankment.

Since 2011, there has been a capital investment of \$125.1 million to upgrade, repair transport and drainage infrastructure and flood recovery works.

Flood studies were completed in 35 locations to the value of \$650,000.

The Goggs Creek Flood Early Warning System, which monitors creek flows and alerts emergency services, was completed and commissioned along with the Oakley Flood Early Warning System and Flood Forecasting System.

More than \$200 million of project works in progress were finalised with the majority being roads reconstructed from flood events in the last financial year.

Of that \$200 million related to wastewater infrastructure projects such as the western sewerage trunk network.

The Goggs Creek Flood Early

Warning System, which monitors creek flows and alerts emergency services, was completed and commissioned along with the Oakley Flood Early Warning System and Flood Forecasting System.

Queensland Times, 27 November 2014

### Main street of Tully closed to traffic

A SECTION of Tully's main street will be closed for road repair work this Saturday and Sunday.

On Saturday morning Balfour St will be closed between Huet Street and the roundabout, and Huet St will be closed from Richardson to Morris St.

On Saturday afternoon and on Sunday the CBD shopping area from Huet St to Bryant St will also be closed to traffic.

Casowary Coast Mayor Bill Shannon said the road repairs were part of council's disaster recovery works program relating to Cyclone Ita, and

were being funded through the Federal and State governments' Natural Disaster Relief and Recovery Arrangements.

The roadworks will involve repaving the road, excavating sections of the road and forming a new road surface. Asphalt work will be undertaken on another day, as soon as contractors are available.

Balfour St will be open to traffic again on Monday.

Council's Transport Infrastructure Planning portfolio holder Cr Ian Rule apologised for the inconvenience to residents.

He said council and the contractors were doing their

best to minimise disruptions by closing the shopping section of Balfour St after Saturday morning shopping and by keeping access open to the transit centre throughout the works.

"There will be access to town via Murray St and access to Butler St businesses via side roads," Cr Rule said.

"A traffic controller will be on hand at the roundabout to make sure transit centre vehicles can get through during the work."

Bundaberg News Mail, 27 November 2014

### Beefing up flood mapping

A NEW flood mapping study of Western Creek catchment in the Crayfield Basin and Caboolture area would lead to the improved accuracy of historical flood mapping information for residents and businesses.

Looking at debris levels, heights, street-level evidence and equipment reports, the study highlights flood characteristics in areas that flood levels and was undertaken to give a single source of accurate information.

Shannon Council project manager Paul Pridmore said the project related information gathered to the study for use by developers and businesses in conjunction with flood signs and give more certainty to those living in the catchment.

"Each flood can be different. We are beefing up our program so that the flood information provides a lot more rigour and credibility," Cr Pridmore said.

"Western Creek catchment covers an area of 200 square kilometers and includes the townships of Glendalwood and Glendhurst."

"Any mapping recommendations will now be reviewed and the results of this new study will be included in the City of Ipswich Flood Information System."

Mr Pridmore said the project related information gathered to the study for use by developers and businesses in conjunction with flood signs and give more certainty to those living in the catchment.

Innisfail Advocate, 5 November 2014

### Minister opens new shelter

THE Bundaberg cyclone shelter will be officially opened this weekend.

Minister for State Services, Minister Bill Lewis and Local Government, Community Recovery and Resilience Minister David Crisafulli, will open the multipurpose facility on Saturday morning in front of several guests.

However, Bundaberg residents will not see it, with the RNCU Car Rely Bundaberg Community Fun Day at the shelter on Sunday from 11am to 3pm.

Mr Lewis said the day was an opportunity for the community to use the facility.

"This is a chance for our residents to come along and find out more about this great facility and learn how to prepare themselves for cyclones," Mr Lewis said.

"There'll be live entertainment, live food demonstrations, a display of what it would be like in the shelter of people that stay here."

Mr Lewis said residents would also have access to a generator on the day.

"Our team will be there taking residents to fill up a drum and other things to do, you can see in the shelter for the generator," he said.

"Now is the time for us to start to prepare for the coming cyclone season."

"Clean up your yards, trim your trees and get your emergency kit together. Our message is very consistent."

"I have been through a lot of events in the past and have learnt well."

"I believe it is our community spirit and preparation that can win the day."

Mr Lewis said the new cyclone shelter would only be used for category four or five events and the shelter would double as the Bundaberg.



LEFT AND ABOVE: The completed beach-side shelter multipurpose facility - exterior and in.

North Queensland Register, 27 November 2014

### Memories come flooding back

Iconic photo of Colleges Crossing will now hang at cafe where it belongs

JOEL GOULD says it is a photo of glory past that creates a bitter-sweet feeling for Colleges Crossing Cafe owner Mike D'Arcy.

But Mr D'Arcy is now proud to have the Warren Stone photograph of the lake at Colleges Crossing taken before the 2011 floods in his cafe wall.

"It is bitter-sweet memory to have the Warren Stone photograph of the lake at Colleges Crossing taken before the 2011 floods in his cafe wall."

"A total of \$1.79 million was awarded for the restoration of Colleges Crossing with funding provided by the Queensland Reconstruction Authority under Natural Disaster Relief and Recovery Arrangements, a joint Federal and Queensland government initiative."

Queensland Mayor Paul Pridmore presented the photos taken by Mr Stone to Mr D'Arcy on Friday. It had previously been in council's possession.

"We took over the cafe in late 2006 and it is a pre-2011 shot of the lake and the area at Colleges Crossing just prior to two major disasters," Mr D'Arcy said.

"It reminds us of what it was like when we took it over and a time before the disaster came through and completely changed the landscape down there."

"If you have a look at the photograph you can hardly see the café sitting on the hill because it is surrounded by trees."

"It is bitter-sweet memory to have a look at."

"It was very traumatic for us to go through the floods of 2011 because it closed us down for two years. It reminds us of what it once was."

"The cafe just recently celebrated its 50th anniversary."

"Mr D'Arcy said most of the staff that he had pre-floods had 'stuck with us'."

"They had to go away and change their lives as we did for two years post-2011," he said.

"After two years of rebuilding our business, we came back in 2014, opened a week and got wiped out again. But we are back now."

"Warren Stone is a fantastic photographer and he captured a lot of those pre-2011 shots of Colleges Crossing."

"One of the shots we have that we still treasure is one of a huge fig tree that we had here."

"Warren decided to hand over one of those shots to council and they have decided to hand it to us."

**“ Warren Stone is a fantastic photographer and he captured a lot of those pre-2011 shots of Colleges Crossing. Mike D'Arcy**



PHOTO: KATE CERRY

Queensland Times, 18 November 2014

### Roadworks race wet

ROADWORKS are continuing in Tully, with work on Butler, Walkins and several other streets this week.

The Butler and Walkins streets works and the other smaller projects are pavement repair jobs.

Casowary Coast Regional Council's Transport Infrastructure portfolio holder Cr Ian Rule apologised for the inconvenience to drivers, and said council was working hard to finish a range of projects before the wet season.

Butler and Walkins streets will be under traffic control, with the work undertaken in sections so that it reduces day-to-day disruptions as much as possible.

Cr Rule said all the excavation work was completed last week on the section of Butler St undergoing repairs, outside the transit centre, and stabilisation work on the subgrade underneath the pavement was completed this week. Council

Innisfail Advocate, 19 November 2014

### Getting the job done

River Rd flood recovery project will 'save Queensland millions'

THE \$100 million River Rd flood recovery project will save Queensland millions, says the Queensland Reconstruction Authority.

The project is expected to be completed by late November. These works are being funded by the Natural Disaster Relief and Recovery Arrangements (NDRRA) with 75 per cent of funding coming from the federal government and 25 per cent from the State Government.

"Each flood can be different. We are beefing up our program so that the flood information provides a lot more rigour and credibility," Cr Pridmore said.

"Western Creek catchment covers an area of 200 square kilometers and includes the townships of Glendalwood and Glendhurst."

"Any mapping recommendations will now be reviewed and the results of this new study will be included in the City of Ipswich Flood Information System."

Mr Pridmore said the project related information gathered to the study for use by developers and businesses in conjunction with flood signs and give more certainty to those living in the catchment.

"We'll flood events where the highway was closed here in the past 30 years, five or six of those would have been over the new road as well."

"But even then, it would be open more quickly and it's a time saving."

Cr Pridmore said the project related information gathered to the study for use by developers and businesses in conjunction with flood signs and give more certainty to those living in the catchment.

"This is a chance for our residents to come along and find out more about this great facility and learn how to prepare themselves for cyclones," Mr Lewis said.

"There'll be live entertainment, live food demonstrations, a display of what it would be like in the shelter of people that stay here."

Mr Lewis said residents would also have access to a generator on the day.

"Our team will be there taking residents to fill up a drum and other things to do, you can see in the shelter for the generator," he said.

"Now is the time for us to start to prepare for the coming cyclone season."

"Clean up your yards, trim your trees and get your emergency kit together. Our message is very consistent."

"I have been through a lot of events in the past and have learnt well."

"I believe it is our community spirit and preparation that can win the day."

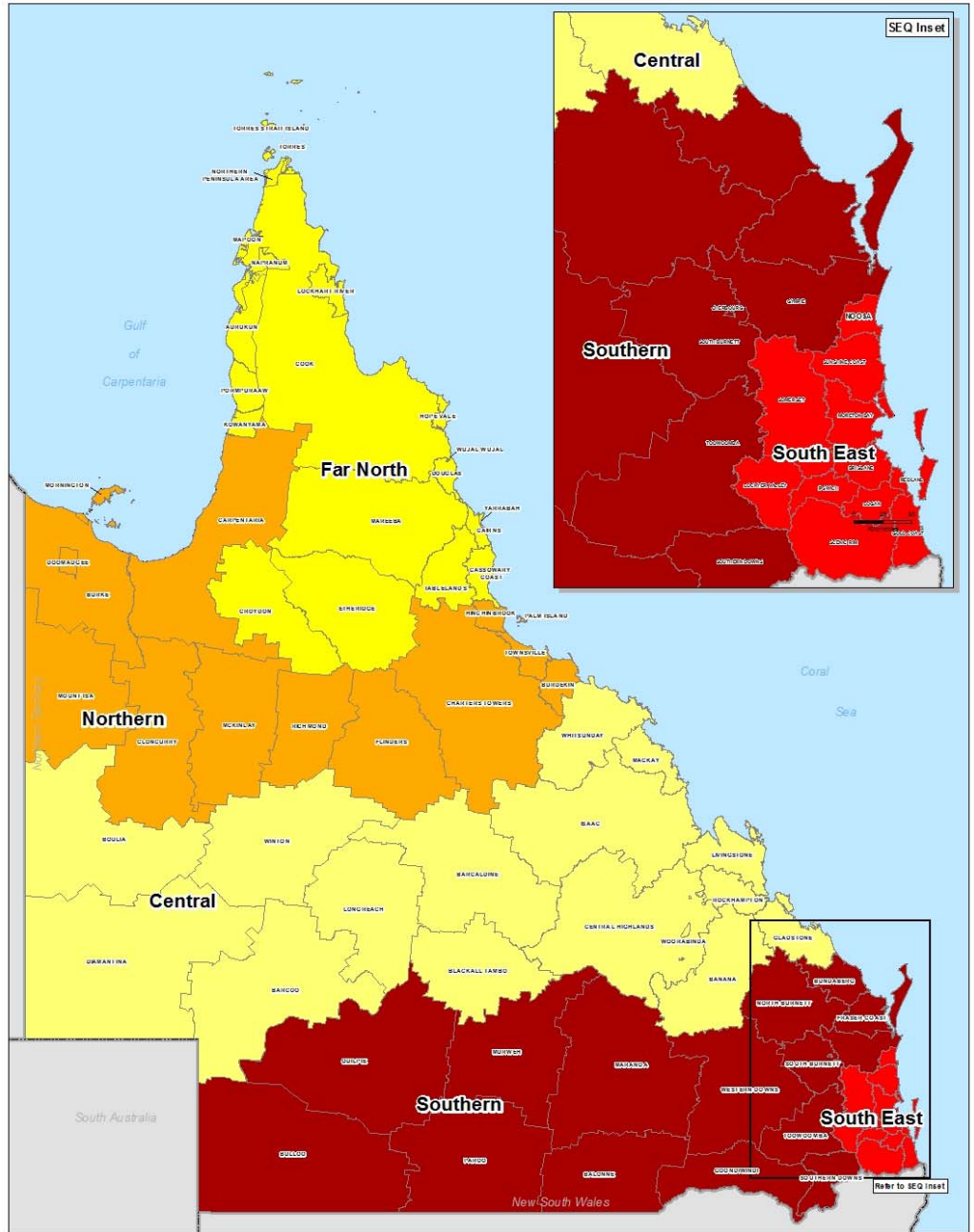
Mr Lewis said the new cyclone shelter would only be used for category four or five events and the shelter would double as the Bundaberg.

Gympie Times, 6 November 2014

# Appendices

# Appendix A: Local Government Areas by Region

Region	Local Government Areas (LGA's)	
<b>Far North Queensland (FNQ)</b>	ASC Aurukun Shire Council	
	CRC Cairns Regional Council	
	CCRC Cassowary Coast Regional Council	
	CoSC Cook Shire Council	
	CfSC Croydon Shire Council	
	DSC Douglas Shire Council	
	ESC Etheridge Shire Council	
	HVASC Hope Vale Aboriginal Shire Council	
	KASC Kowanyama Aboriginal Shire Council	
	LRASC Lockhart River Aboriginal Shire Council	
	MASC Mapoon Aboriginal Shire Council	
	MbaSC Mareeba Shire Council	
	NASC Napranum Aboriginal Shire Council	
	NPARC Northern Peninsula Area Regional Council	
	PASC Pormpuraaw Aboriginal Shire Council	
	TRC Tablelands Regional Council	
	TSC Torres Shire Council	
	TSIRC Torres Strait Island Regional Council	
	WWASC Wujal Wujal Aboriginal Shire Council	
	YASC Yarrabah Aboriginal Shire Council	
<b>North Queensland (NQ)</b>	BrdSC Burdekin Shire Council	
	BrkSC Burke Shire Council	
	CSC Carpentaria Shire Council	
	CTRC Charters Towers Regional Council	
	CISC Cloncurry Shire Council	
	DASC Doomadgee Aboriginal Shire Council	
	FSC Flinders Shire Council	
	HSC Hinchinbrook Shire Council	
	McSC McKinlay Shire Council	
	MoSC Mornington Shire Council	
	MICC Mount Isa City Council	
	PIASC Palm Island Aboriginal Shire Council	
	RSC Richmond Shire Council	
	TCC Townsville City Council	
	<b>Central Queensland (CQ)</b>	BanSC Banana Shire Council
		BarRC Barcaldine Regional Council
BarSC Barcoo Shire Council		
BTRC Blackall-Tambo Regional Council		
BOSC Boulia Shire Council		
CHRC Central Highlands Regional Council		
DSC Diamantina Shire Council		
GSC Gladstone Regional Council		
IRC Isaac Regional Council		
LSC Livingstone Shire Council		
LRC Longreach Regional Council		
MacRC Mackay Regional Council		
RRC Rockhampton Regional Council		
WRC Whitsunday Regional Council		
WSC Winton Shire Council		
WASC Woorabinda Aboriginal Shire Council		
<b>Southern Queensland (SQ)</b>		BaSC Balonne Shire Council
	BSC Bulloo Shire Council	
	BRC Bundaberg Regional Council	
	CASC Cherbourg Aboriginal Shire Council	
	FCRC Fraser Coast Regional Council	
	GoRC Goondiwindi Regional Council	
	GRC Gympie Regional Council	
	MarRC Maranoa Regional Council	
	MuSC Murweh Shire Council	
	NBRC North Burnett Regional Council	
	PSC Paroo Shire Council	
	QSC Quilpie Shire Council	
	SBRC South Burnett Regional Council	
	SDRC Southern Downs Regional Council	
ToRC Toowoomba Regional Council		
WDRC Western Downs Regional Council		
<b>South East Queensland (SEQ)</b>	BCC Brisbane City Council	
	GCCC Gold Coast City Council	
	ICC Ipswich City Council	
	LVRC Lockyer Valley Regional Council	
	LCC Logan City Council	
	MBRC Moreton Bay Regional Council	
	NSC Noosa Shire Council	
	RCC Redland City Council	
SRRC Scenic Rim Regional Council		
SRC Somerset Regional Council		
SCRC Sunshine Coast Regional Council		



**Local Government Areas and QldRA Reporting Regions**  
Scale at A4: 1:6,700,000

Disclaimer: This map has been prepared by the Dept of Community Safety. Other users must verify that the data is accurate and suitable for their purposes. The Queensland Reconstruction Authority does not accept any liability or responsibility arising from the use of or reliance on this map.

Queensland Reconstruction Authority

**Legend**  
 qldra\_region  
 Far North Queensland  
 North Queensland  
 Central Queensland  
 Southern Queensland  
 South East Queensland  
 Local Government Areas

As at 5/02/2014

