

**QUEENSLAND RECONSTRUCTION AUTHORITY**

# **Monthly Report**

**February 2016**

A decorative graphic in the bottom right corner of the page, consisting of several overlapping, radiating lines in various shades of maroon and red, creating a sense of movement and depth.

## **Document details:**

Security classification	Public
Date of review of security classification	February 2016
Authority	Queensland Reconstruction Authority
Author	Chief Executive Officer
Document status	Final
Version	1.0

## **Contact for Enquiries:**

*All enquiries regarding this document should be directed to:*

*Queensland Reconstruction Authority*

*Phone the call centre - **1800 110 841***

## **Mailing Address**

Queensland Reconstruction Authority

PO Box 15428

City East Q 4002

*Alternatively, contact the Queensland Reconstruction Authority by emailing [info@qldra.org.au](mailto:info@qldra.org.au)*

## **Licence**

*This material is licensed under a [Creative Commons - Attribution 3.0 Australia licence](#).*



*The Queensland Reconstruction Authority requests attribution in the following manner:*

© The State of Queensland (Queensland Reconstruction Authority) 2011-2015

## **Information security**

*This document has been classified using the [Queensland Government Information Security Classification Framework \(QGISCF\)](#) as PUBLIC and will be managed according to the requirements of the QGISCF.*

---

*Message from the Chief Executive Officer*

Major General Richard Wilson AO (Ret'd)  
Chairman  
Queensland Reconstruction Authority

Dear Major General Wilson

It is with pleasure that I present the February 2016 Monthly Report – the 60th report to the Board of the Queensland Reconstruction Authority (the Authority).

The Authority was established under the *Queensland Reconstruction Authority Act 2011* (the Act) following the unprecedented natural disasters which struck Queensland over the summer months of 2010-11. The role of the Authority has since been extended a number of times to cover historical and continuing disaster events in Queensland. In June 2015, the Authority's operations were made permanent enabling it to continue the work of helping Queensland communities effectively and efficiently recover from the impacts of natural disasters.

The Authority is charged with managing and coordinating the Government's program of infrastructure renewal and recovery within disaster-affected communities, with a focus on working with our State and local government partners to deliver best practice expenditure of public reconstruction funds.

The February report provides an update on the progress of recovery.

Since the last report, a further eight local government areas have been activated for disaster relief for the *Gulf of Carpentaria Monsoon Trough – 20-31 December 2015* event, bringing the total to 26 council areas through north-western Queensland that have been activated for the event. The Authority is continuing to liaise with relevant councils to assist with advice and damage assessments and remains prepared to respond should additional disasters strike in the current 'disaster season'.

The Authority is also currently assisting delivery agents to progress the 2014 and 2015 events through the submission preparation and approval and delivery phases, and finalising eligibility assessments to close out the 2013 events and other works completed by 30 June 2015 for acquittal in the next claim due to the Commonwealth in March 2016.

In relation to the \$833 million of works from the 2014 and 2015 events in the delivery phase, \$712 million has been approved, representing an increase of \$12 million since last month. Additional submissions worth \$62 million are with the Authority and under investigation or awaiting additional information. \$406 million (49%) of works in relation to the delivery program has been reported to the Authority at 31 December 2015 as in progress or delivered.

The February report highlights Tablelands Regional Council's rapid delivery of the reconstruction of Seamark Road Bridge, a vital link for the local community which was damaged in floodwaters in early 2015, and the recognition of Western Downs Regional Council at the Get Ready Queensland Resilient Australia Awards 2015 for the Mercy Pedestrian Bridge betterment project in Dalby. The report also reflects on the fifth anniversary of the 2011 floods for Toowoomba Regional Council area, and the resilience and strength of the local community that has seen the city rebuilt with improved infrastructure that offers greater resilience to withstand future flooding.

I commend the report to you and recommend its release to the Minister and the public pursuant to Section 41 of the *Queensland Reconstruction Authority Act 2011*.

Yours sincerely



Brendan Moon  
Acting Chief Executive Officer  
Queensland Reconstruction Authority

# Contents

<b>1.0 Introduction</b>	<b>1</b>
1.1 Purpose	2
1.2 Timing	2
<b>2.0 Disaster Assistance</b>	<b>3</b>
2.1 Queensland Disaster Assistance Framework	4
2.2 Events and relief measures managed by the Authority	5
2.3 Additional assistance measures	7
<b>3.0 Program Status</b>	<b>8</b>
3.1 Recent developments	9
3.2 Program status	9
3.3 State-controlled roads and highways	10
3.4 Additional assistance measures	11
3.5 Severe Tropical Cyclone Marcia Recovery Plan - status update	12
3.6 Program spotlights	13
<b>4.0 Communications</b>	<b>16</b>
4.1 Communicating progress	17
4.2 Media reports	18
<b><u>Appendices</u></b>	
Appendix A: Local Government Areas by Region	20

**Section one:**  
**Introduction**



# 1.0 Introduction

## 1.1 Purpose

The Queensland Reconstruction Authority (the Authority) was established on 21 February 2011 under the *Queensland Reconstruction Act 2011* (the Act) following the extensive series of natural disasters that impacted Queensland over the summer of 2010-11.

The Authority's mission is **to reconnect, rebuild and improve Queensland communities and its economy.**

The Authority is charged with managing and coordinating the Government's program of infrastructure renewal and recovery within disaster-affected communities, with a focus on working with our State and local government partners to deliver best practice expenditure of public reconstruction funds.

Initially established for a two year period, the Authority was extended a number of times as its role expanded to cover historical and continuing disaster events. In June 2015, the Authority was made permanent enabling it to continue the critical work of helping Queensland communities effectively and efficiently recover from the impacts of natural disasters.

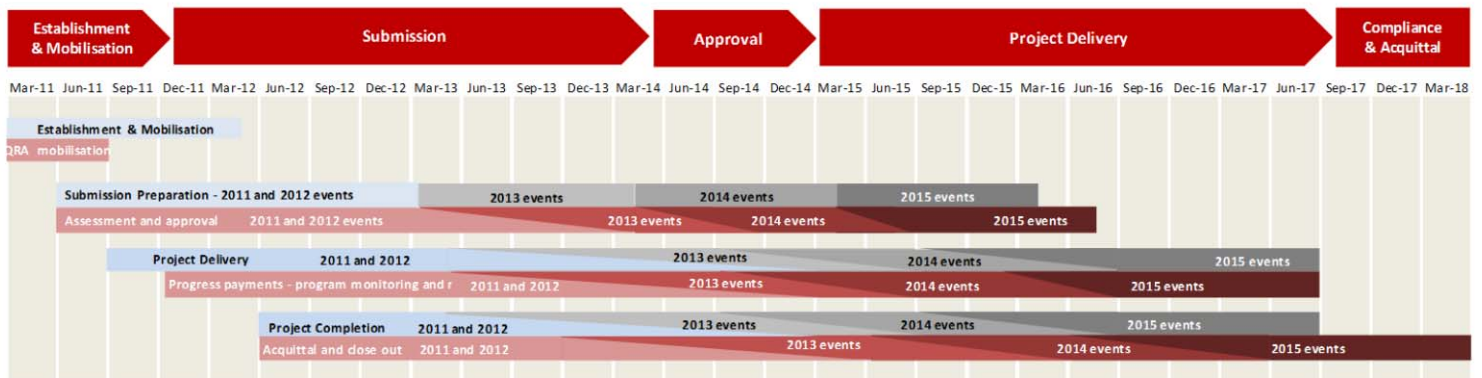
As part of its role, the Authority administers the rebuilding program for Natural Disaster Relief and Recovery Arrangements (NDRRA) activated disaster events and is responsible for the acquittal of NDRRA funding including Counter Disaster Operations, Emergent Works Restoration of Essential Public Assets, Category C and Category D assistance to both State Departments and Agencies and Local Government Authorities. Since its establishment in February 2011, the Authority has managed and coordinated the infrastructure reconstruction and recovery for 54 disaster events activated for NDRRA relief measures.

## 1.2 Timing

The Commonwealth NDRRA Determination imposes time limits for the delivery and acquittal of works.

The Determination provides for a time limit of two financial years after a disaster to deliver reconstruction works and a further nine months after the end of the financial year in which the works were completed in order to acquit the works. NDRRA funding is formally acquitted through the annual submission of a financial statement to the Commonwealth comprising a compilation of claims for financial assistance in respect of state NDRRA expenditure incurred on eligible disasters in the preceding financial year (Commonwealth Claim). Lodgement of Commonwealth Claims is required to secure reimbursement of the Commonwealth's share of eligible expenditure.

As the Authority is managing a series of events that occurred across a number of financial years, the Authority's program is spread across various stages in the delivery and acquittal phases.



Works for 20 disasters from the 2014, 2015 and 2016 event periods are currently in the delivery phase; and completed works from a further 12 events across the 2011 to 2013 event periods are in the acquittal phase.

The Authority is currently finalising the assessment of councils and State agencies' completion documentation through the close out phase for the program of works completed prior to 30 June 2015 for acquittal in the next claim due to the Commonwealth by 31 March 2016. Relevant works include the balance of works from Tropical Cyclone Oswald and other events of 2013 which were due for completion prior to 30 June 2015.

The Authority is also assisting with progression of works in the delivery phase, that comprises works from the 2014 and 2015 events, through the damage assessment, submission preparation and approval and delivery phases.

With the recent activation of 2016 events, the Authority is also liaising with local government delivery agents providing NDRRA advice and assistance with damage assessments and submission preparation. The Authority also remains prepared to respond should additional disasters strike in the current 'disaster season'.

**Section two:**  
**Disaster Assistance**

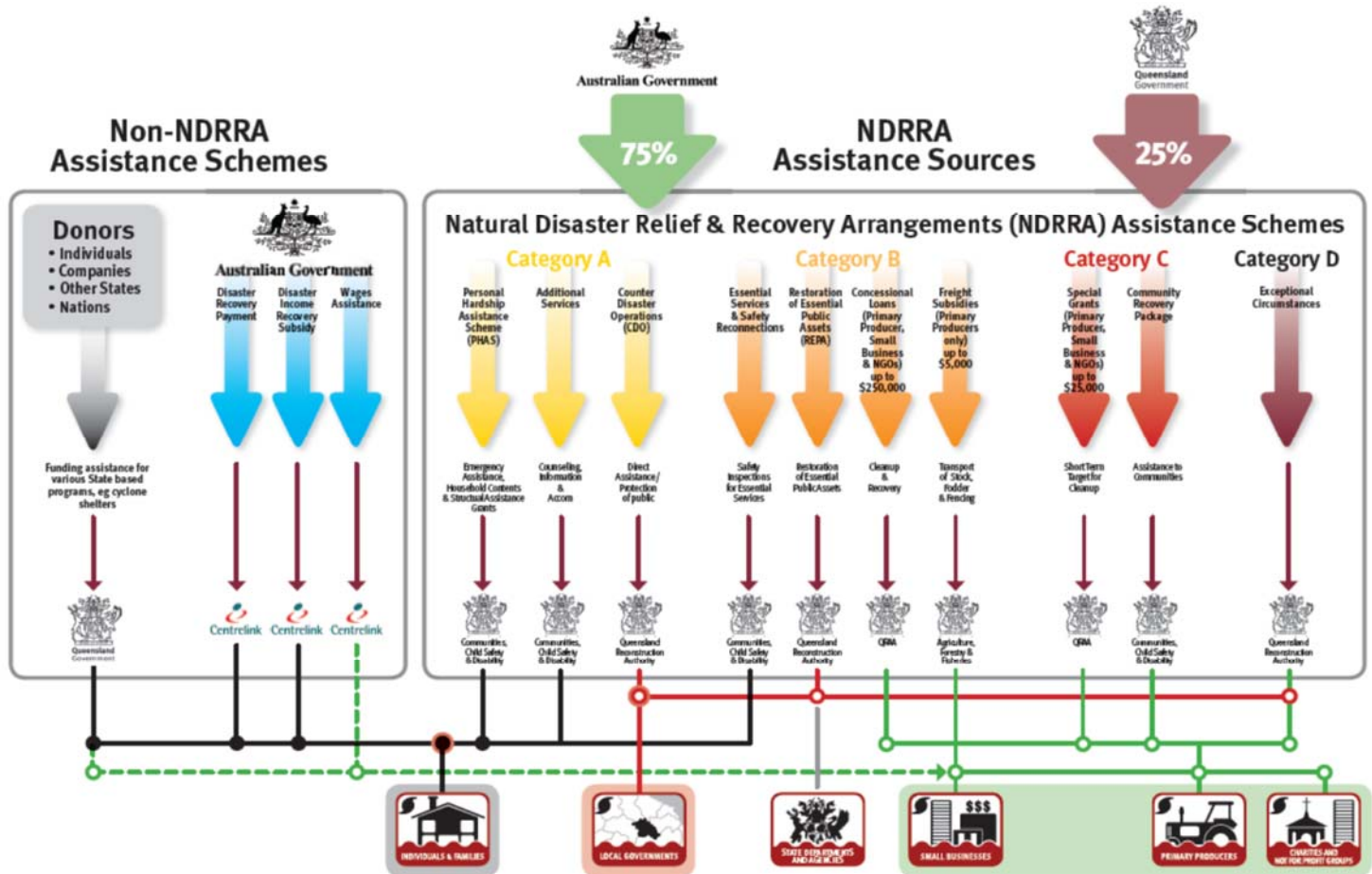


## 2.0 Disaster Assistance

### 2.1 Queensland Disaster Assistance Framework

The available Queensland Disaster Assistance schemes are separated between NDRRA (jointly funded by the Commonwealth and State governments) and Non-NDRRA funding schemes. The diagram below indicates the different elements of assistance available and how each element operates.

Figure 2.1.1 Queensland Disaster Assistance Framework



Whilst elements of the assistance schemes are delivered by other State agencies, all of the NDRRA assistance sources (and elements of the non-NDRRA assistance schemes) are administered by the Authority for historical and continuing disaster events in Queensland.

#### Disaster events managed by the Authority

The list of the activated disaster events managed by the Authority are set out in **Section 2.2** and can also be found on [www.disaster.qld.gov.au](http://www.disaster.qld.gov.au).

This report includes references to event periods described as follows:

- **2016 events:** Activated disaster events managed by the Authority occurring in the financial year ending **30 June 2016**
- **2015 events:** Activated disaster events managed by the Authority which occurred in the financial year ended **30 June 2015**
- **2014 events:** Activated disaster events managed by the Authority which occurred in the financial year ended **30 June 2014**
- **2013 events:** Activated disaster events managed by the Authority which occurred in the financial year ended **30 June 2013**, including Tropical Cyclone Oswald and associated rainfall and flooding (January 2013)
- **2012 events:** Activated disaster events managed by the Authority which occurred in the financial year ended **30 June 2012**
- **2011 events:** Activated disaster events managed by the Authority which occurred in the financial year ended **30 June 2011**, including Tropical Cyclone Yasi and Queensland flooding (December 2010 to February 2011).



## 2.2 Events and relief measures managed by the Authority

The Authority has responsibility to administer NDRRA relief measures for historical and continuing disaster events in Queensland.

Since its establishment in February 2011, the Authority has managed and coordinated the infrastructure reconstruction and recovery for 54 disaster events activated for NDRRA relief measures. Of these, works for 20 disasters from the 2014 to 2016 event periods are currently in the delivery phase<sup>1</sup> and completed works from a further 12 events across the 2011 to 2013 event periods are in the acquittal phase<sup>1</sup>.

The maps opposite show the LGAs activated for relief measures under NDRRA for the 2011 to 2016 event periods managed by the Authority.

Since the last report, there has been activations for an additional eight LGAs for the *Gulf of Carpentaria Monsoon Trough – 20-31 December 2015* event.

### 2016 events

*(Works to be delivered by 30 June 2018, with final acquittal due by March 2019)*

- Gulf of Carpentaria Monsoon Trough – 20-31 December 2015
- Fernvale Severe Storm, 27 October 2015.

### 2015 events

*(Works to be delivered by 30 June 2017, with final acquittal due by March 2018)*

- South East Queensland Low, 30 April – 1 May 2015
- Tropical Cyclone Nathan and associated rainfall & flooding, 11-15 March 2015
- Severe Tropical Cyclone Marcia and South East Queensland Trough - 19 to 22 February 2015
- Tropical Cyclone Lam, 15-18 February 2015
- North Queensland Severe Weather and Flooding - 8 to 15 February 2015
- Central Eastern Queensland Heavy Rainfall and Flooding - 21 to 29 January 2015
- Western Queensland Heavy Rainfall and Flooding - 5 to 18 January 2015
- Central Queensland Heavy Rainfall and Flooding - 8 to 14 December 2014
- Brisbane Severe Thunderstorm - 27 December 2014.

### 2014 events

*(Works to be delivered by 30 June 2016, with final acquittal due by March 2017)*

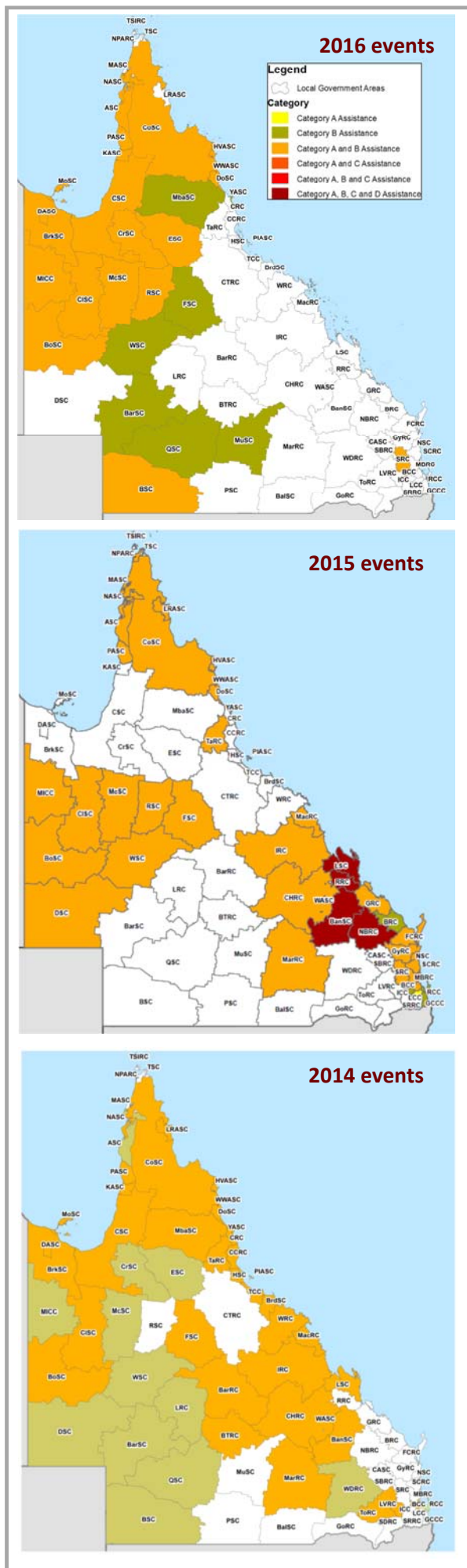
- Tropical Cyclone Ita & Associated Rainfall & Flooding, 11-14 April 2014
- Tropical Cyclone Gillian - 10 to 11 March 2014
- Central Coast & Southern Queensland Trough, 26-30 March 2014
- Central & Western Queensland Flooding & Rainfall, 18-28 February 2014
- North East Queensland Monsoonal Rainfall & Flooding - 7 to 9 February 2014
- Tropical Cyclone Fletcher, commencing 2 February 2014
- Far North Queensland Peninsula Flooding (27-31 January 2014)
- Tropical Cyclone Dylan, 31 January 2014
- North Stradbroke Island Fires, commencing 29 December 2013.

### 2013 events

*(Delivery of works complete, with final acquittal due by March 2016)*

- South West Queensland Wildfires, 21 December 2012
- Far Northern Queensland Bushfires, late October - December 2012
- Tropical Cyclone Oswald and Associated Rainfall & Flooding, 21-29 January 2013
- Longreach Flood, 18 February 2013

1. The NDRRA Determination imposes a time limit of two financial years after a disaster to deliver reconstruction works (delivery phase) a further nine months after the end of the financial year in which the works were completed to acquit the works (acquittal phase). Acquittal of the works occurs through the lodgement of an annual claim to the Commonwealth and is required to secure reimbursement of the Commonwealth's share of eligible expenditure.



## 2.2 Events managed by the Authority (cont.)

### 2012 events

*(Delivery and acquittal of works complete other than suite of projects that received extensions of time for delivery to December 2014, with acquittal due by March 2016)*

- Queensland Bushfires, August to October 2011
- Localised Heavy Rainfall Northern Queensland, October 2011
- Southern Queensland Flooding, December to December 2011 #
- South East Queensland Heavy Rainfall and flooding, 23- 26 January 2012 #
- Western Queensland Tropical Low, January - February 2012 #
- Far Northern Queensland Tropical Low, 3-4 February 2012 #
- North Coast Queensland Storms and flooding and East Coast Hybrid Low, 24 February - 7 March 2012 #
- Northern & Far Northern Queensland Heavy Rainfall & flooding, 15 March 2012 #
- East Coast Low, 22 March 2012.

### 2011 events

*(Delivery and acquittal of works complete other than two projects that received extensions of time for delivery to June 2015, with acquittal due by March 2016)*

- South West Flooding, April 2011
- Queensland Monsoonal Flooding Event, 28 February 2011
- Severe Tropical Cyclone Yasi on 2 February 2011
- Queensland Flooding and Tropical Cyclones Tasha and Anthony, December 2010 to February 2011 \*.

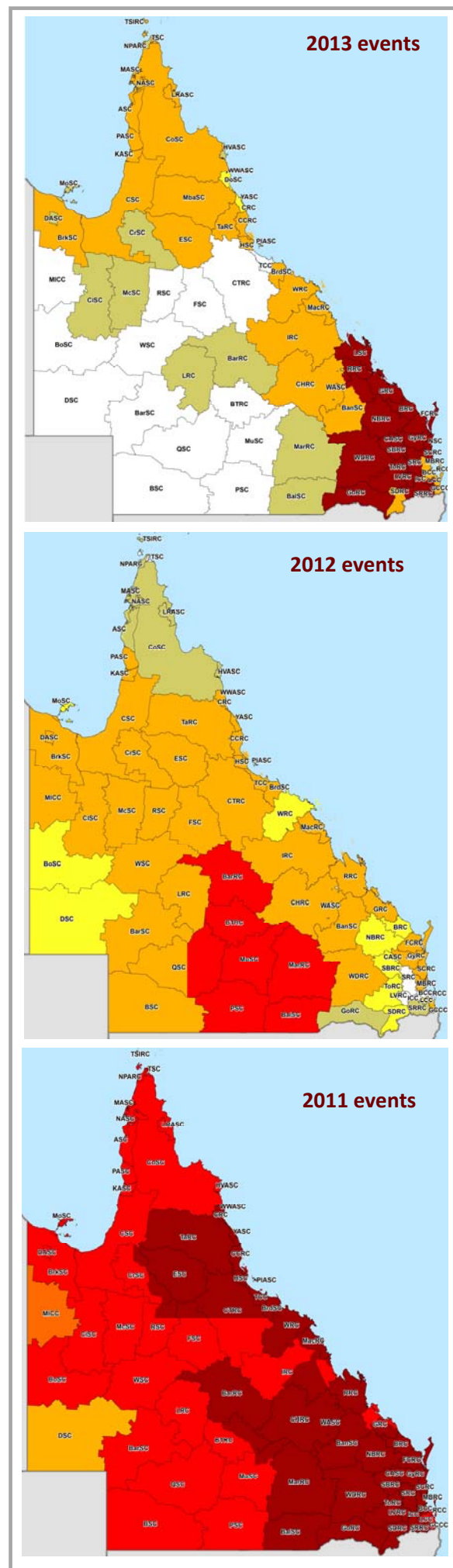
### 2007-2010 events managed by the Authority

*(Delivery and acquittal of works complete)*

- Queensland Monsoonal Flooding and Tropical Cyclones Olga, Neville, Ului and Paul, January to April 2010
- Northern, Central and South West Queensland Flooding, 22 December 2009 to 8 January 2010
- South West Flooding, 20 – 25 December 2009
- 2010 South East Queensland Flooding, 9-12 October 2010.
- Queensland Bushfires, September – October 2009
- South West Queensland Low and Associated Flooding, September 2010
- South East Queensland Low, May 2009
- Queensland Monsoonal flooding and Tropical Cyclone Charlotte and Ellie, January - February 2009
- Queensland storms and associated flooding, 16-22 December 2008
- South West Queensland flooding, June 2008
- Queensland Monsoonal flooding, February March 2008
- Queensland Monsoonal flooding, January 2008
- South East Queensland East Coast Low, 27 December 2007 - 7 January 2008
- Central Western Queensland storms and flooding, 22-30 December 2007
- South West Queensland storms and flooding, 23-30 December 2007
- South East and North Coast Queensland East Coast Low, August 2007.

# Event includes works that received extension of time for delivery to 31 December 2014. All other 2012 events have completed delivery and acquittal phases.

\* Event includes works that received extension of time for delivery to 30 June 2015. All other 2011 events have completed delivery and acquittal phases.



## 2.3 Additional assistance measures

The State Government in conjunction with the Commonwealth have activated a range of jointly-funded Category C, Category D and other relief measures to alleviate distress due to the impact of the 2015, 2014, 2013 and 2011 events, summarised as follows:

### 2015 events (Tropical Cyclone Marcia)

- **Betterment fund - \$20 million** - available for the restoration or replacement of non-State owned assets to a more disaster resilient standard than their pre-disaster standard. The intent of betterment is to increase the resilience of communities to natural disasters, while at the same time reducing future expenditure on asset restoration, reducing incidents, injuries and fatalities and improving asset utility during and after disaster events.
- **Clean-up and restoration of national parks, beaches and recreational assets - \$6 million** - funding to clean-up and repair damaged community infrastructure such as picnic areas, walking tracks and associated amenities.
- **Green waste clean-up - \$1 million** - assist LGAs in the most heavily impacted areas of Rockhampton, Livingstone, Banana and North Burnett with the costs of extensive green waste clean-up and removal activities from private properties and businesses.
- **Industry Recovery Officers - \$750,000** - Placement of Industry Recovery Officers to provide recovery information and support to primary producers in the worst affected areas.
- **Community Recovery Package (Category C) - \$5.1 million** - Funding to engage community development officers and personal support managers and case workers to aid the recovery of severely affected communities in the local government areas of Rockhampton, Livingstone, Banana, North Burnett and part of Gladstone.

### 2014 events

- **\$1.6 million** funding for the additional costs incurred by Cook Shire Council for disaster reconstruction work on the Peninsula Road Network.

### 2013 events

- **Betterment fund - \$80 million** - available for the restoration or replacement of essential public assets to a more disaster resilient standard than their pre-disaster standard. The status of the 2013 Events Betterment fund is set out in Section 3.6 of this report.
- **Community Recovery Package (Category C) - \$5 million** - Funding for community development officers in the hardest hit communities of Bundaberg and North Burnett, support for mental health services and a flexible fund that assists communities to implement engagement and development activities.
- **Clean Up and Recovery program - \$10 million** - Program to assist primary producers to clear debris and restore fencing in the worst affected areas; to maintain workers while income generating activities are reduced and to clear debris from watercourse that poses a hazard to downstream infrastructure and activities.
- **Industry Recovery Officers - \$1.5 million** - Placement of Industry Recovery Officers to assist business and primary producers recover from flooding.
- **Enhanced concessional loans and grants** - Loans of up to \$650,000 (with a grant component of up to \$50,000) are available to applicants that have suffered extreme damage such that the existing concessional loan and recovery grants under NDRRA category B and C are insufficient to support recovery.
- **Environmental Recovery program - \$10 million\*** - Program to fund existing programs to conduct flood specific clean up and soil conservation work following the 2013 flooding.
- **Rural Financial Counselling Services - \$1.5 million\*** - Provision of financial planning advice for rural businesses and primary producers to assist in the recovery of local economies following the disaster.
- **Other measures - \$11.9 million** to fund dredging works to restore Bundaberg Port to its pre-2013 flood clearance depths; and **\$900,000** to assist Bundaberg Regional Council meet the cost of recovery works for community parks and gardens.

### 2011 events

- **Queensland Local Council Package - \$315 million** - Funding to help local councils repair utilities and infrastructure, and support their efforts in recovering from the floods and Cyclone Yasi. The package comprises two components: \$265 million to fast-track the repair of damaged infrastructure, including the Strengthening Grantham project, Brisbane ferry terminals and Riverwalk; and \$50 million to contribute to regional and remote councils employing people to perform clean-up and repair work.
- **Cassowary Coast Support Package - \$15 million** - Funding to restore vital council infrastructure and restore natural vegetation and beach damage in the Cassowary Coast region. Specifically, the Support Package provides for the repair of Dunk Island Jetty, the repair of Clump Point Jetty and the restoration of Cardwell beach foreshore and its natural vegetation.
- **Exceptional Disaster Assistance Scheme** - Concessional interest loans of up to \$650,000, with grant component of up to \$50,000, to eligible businesses, primary producers and not-for-profit organisations that suffered extreme damage.

In addition, the State Government and Commonwealth have agreed to an extended Day Labour Trial for the 2011 to 2013 and 2015 events, which enables councils to deliver restoration works with their own workforce on condition that they provide evidence of savings in both time and cost.

\* Non-NDRRA measures funded 50% by the State and 50% by the Commonwealth; Commonwealth share is being delivered directly through existing Commonwealth programs.

**Section three:**

# **Program Status**



### 3.0 Program Status

#### 3.1 Recent developments

A key milestone in the State’s reconstruction effort was reached on 30 June 2015 with the deadline passing for councils and state agencies to complete works from Tropical Cyclone Oswald and other events from 2012-13; and the remaining works from the 2011 and 2012 event periods that had received extensions of time. The Authority is currently finalising assessments to close out these and other works completed by 30 June 2015 for acquittal in the next claim due to the Commonwealth in early 2016.

The Authority is also assisting with progression of the program of works from the 2014 and 2015 events through the damage assessment, submission preparation and approval and delivery phases. With the recent monsoon trough event in the Gulf of Carpentaria, the Authority is currently working with the 26 councils activated to date to provide advice and assist where needed with damage assessments. The Authority remains prepared to respond should disaster strike in the current ‘disaster season’.

Although the recent monsoon event has brought much needed rain to some affected communities, drought conditions continue to affect delivery of the works through much of the State. The Authority is working with impacted councils to address water shortage issues and, where required, prepare extension of time requests to the Commonwealth where water shortages are likely to impact their completion of 2014 events works by the deadline of 30 June 2016.

#### 3.2 Program status

The value of the total NDRRA program of works managed by the Authority since its establishment is estimated to be \$13.1 billion. Of this, \$12.3 billion of works from the 2010 to 2013 event periods has completed the delivery phase and \$10.8 billion of the program has completed the State’s acquittal processes.

The Authority is currently managing the assessment of submissions and delivery of works with an estimated value of \$833 million for the 2014 Events and 2015 Events (the **Delivery Program**) and an **Acquittal Program** worth \$2.4 billion, comprising the remaining works from the 2011 Events, 2012 Events, 2013 Events, 2014 Events and 2015 Events not yet acquitted.

Program estimates for the two 2016 events that have occurred since the September 2015 review will be developed as part of the next regular estimates review process, which is due to commence in February 2016.

##### Delivery Program status

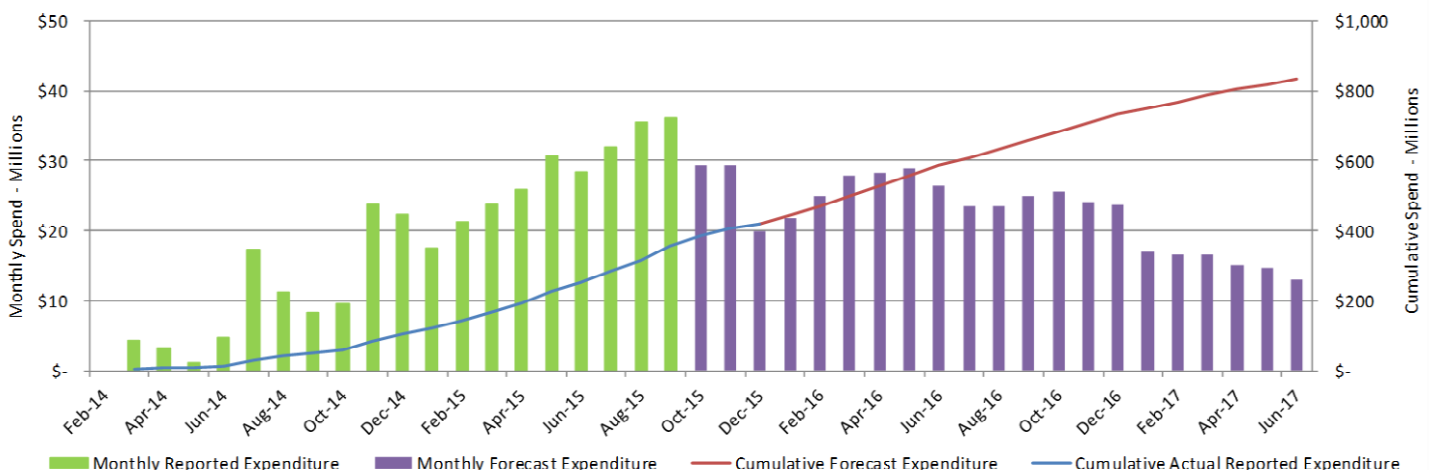
Since the last report, the Authority’s program has progressed as follows:

- A cumulative value of \$988 million in submissions have been received in relation to the Delivery Program, an increase of \$38 million since last month
- A cumulative total of \$712 million has been approved, an increase of \$12 million since last month. Additional submissions worth \$62 million are with the Authority and under investigation or awaiting additional information
- A cumulative value of \$406 million of the Delivery Program has been reported to the Authority at 31 December 2015 as in progress or delivered.

The 2014 and 2015 event works are due for completion by 30 June 2016 and 30 June 2017 respectively.

The graph below shows the monthly reported expenditure and forecasted monthly costs to completion at 31 December 2015 on a combined basis for the Delivery Program (2014 and 2015 Events).

Delivery Program (2014 and 2015 Events) progress



(Source: The Authority, 31 January 2016)

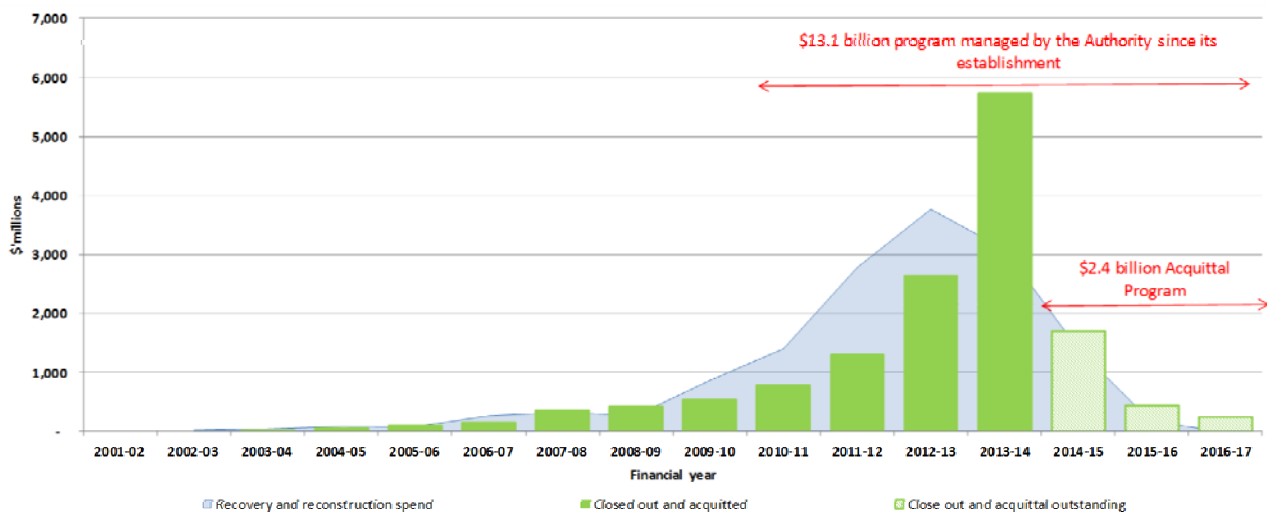
### 3.2 Program status (cont.)

#### Acquittal Program status

The 2014-15 Commonwealth Claim is provisionally estimated to require the close-out and acquittal of approximately \$1.7 billion of works completed up to 30 June 2015.

The close-out of the majority of remaining submissions for the 2014-15 Commonwealth Claim is nearing completion. With works completed up to 30 June 2015, delivery agents collated their final claims for submission to the Authority through to September 2015 and the Authority has now processed the majority of claims. Following audit review, the audited 2014-15 Commonwealth Claim will be due for acquittal to the Commonwealth in March 2016.

The following graph shows the historical and projected acquittal profile for Queensland as per Commonwealth Claims submitted for 2001-02 to 2013-14 and Commonwealth Claims preliminarily expected to be submitted for 2014-15 to 2016-17 in order to finalise acquittal of the \$2.4 billion remaining in the Acquittal Program. Beyond the 2014-15 Commonwealth Claim, the remaining \$0.7 billion of the Acquittal Program representing works completed after 30 June 2015 will be finalised in the 2015-16 and 2016-17 Commonwealth Claims to the Commonwealth by March 2017 and March 2018 respectively.



(Source: The Authority, 31 December 2015)

### 3.3 State-controlled roads and highways

DTMR set up its Transport Network Reconstruction Program (TNRP) to manage the recovery and reconstruction of Queensland's integrated transport system following the damage from natural disaster events in 2010, 2011, 2012 and 2013. The transport system includes state-controlled roads, ports, navigation aids and the rail network. On completion of the final works in June 2015, DTMR's TNRP had spent more than \$6.4 billion on the recovery and reconstruction of 8,741km roads across the State arising from the disaster events of 2010 to 2013.

DTMR is managing the recovery and reconstruction works for the 2014 and 2015 event works that are currently in the delivery phase through its Program Delivery and Operations Branch.

#### Current status

- Of the 214km of roads forecast to be reconstructed following damage from the 2014 events, 204km of works have been completed and the remaining 10km is under construction. Works on the Peninsula Developmental Road in the Cape York region are expected to be finished in early 2016 to complete DTMR's program of 2014 event works.
- A total of 5579km of Queensland's road network was closed or had limited access as a result of the 2015 events. Following completion of the initial recovery phase of works, DTMR has now commenced its reconstruction works.
- Of the 112km of roads that DTMR is forecast to reconstruct following 2015 events, 9km of works have been completed and a further 22km is under construction on active works contracts. The remaining road reconstruction projects are in design and procurement. During December construction started on 19 projects, including works on Gladstone–Monto Road and the Bruce Highway (Rockhampton–St Lawrence) in DTMR's Fitzroy district.
- The majority of 2015 event works on State-controlled roads and highways are currently targeted by DTMR to be completed by 31 December 2016, six months before the funding deadline (weather permitting).
- As a result of the Gulf of Carpentaria Monsoon Trough (20–31 December 2015), a total of 1559km of Queensland's state road network was closed or had limited access. DTMR districts are currently commencing the assessment of damage to the state road network and will undertake emergent works where required.

(Source: DTMR, 31 December 2015)

### 3.4 Additional assistance measures

#### 2013 and 2015 Event Betterment Funds

The \$80 million 2013 Event Betterment fund and \$20 million 2015 Event Betterment fund are Category D relief measures available to those LGAs declared for NDRRA assistance as a result of the 2013 cyclone and flood events and for Tropical Cyclone Marcia respectively. Betterment funding is available for the restoration or replacement of essential public assets to a more disaster resilient standard than existed pre-disaster.

Where a damaged asset is approved for betterment, the normal cost of restoring or replacing the asset to its pre-disaster standard is funded under Category B NDRRA and the incremental cost to 'better' the asset to a more disaster-resilient standard is funded by a capped allocation from the relevant Betterment fund and Council contributions.

Betterment funding is allocated on the basis of the estimated cost of the approved projects. Should the betterment component of a project be delivered for a cost below the capped allocation, then the savings will be returned to the Betterment fund for allocation to other eligible projects, where possible. The current status of the 2013 and 2015 Event Betterment Funds is summarised as follows:

2013 Event Betterment Fund	2015 Event Betterment Fund
<ul style="list-style-type: none"> <li>The 2013 Event Betterment Fund was allocated to 232 approved projects across 35 LGAs to improve the resilience of infrastructure to natural disasters following the 2013 events.</li> <li>Betterment projects include improved bridges, floodways, culverts, levees, water treatment plants and numerous roads across Queensland.</li> <li>All works were completed by the deadline of 30 June 2015 other than three betterment projects which received extensions of time due to excessive rainfall and other factors:               <ul style="list-style-type: none"> <li>Aroona Road (Central Highlands)</li> <li>Boolburra Edungalba Road (Central Highlands)</li> <li>Booyal Crossing Road (Bundaberg) (since completed).</li> </ul> </li> <li>On completion, the total cost of all 2013 Event betterment projects is estimated to be \$150 million, of which \$76 million will have been funded from the 2013 Event Betterment fund.</li> </ul>	<ul style="list-style-type: none"> <li>Expressions of Interest (EOI) were received for 190 projects across eight LGAs eligible for 2015 Event Betterment funding. The proposed projects principally comprise works to increase the resilience of damaged roads, culverts and floodways.</li> <li>Projects are being progressively prioritised to allocate the available pool of funding. Submissions for 127 projects have been received by the Authority to 31 January 2016. Of these, 26 submissions with a total project value of \$31 million, including \$14 million betterment funding, have been approved.</li> <li>Projects approved during January included Clonmel Road (North Burnett Regional Council); Monsildale Bridge (Somerset Regional Council); and improvements to six roads for Gladstone Regional Council, including Tableland Road, Mount Larcom Bracewell Road, Davis Road, Gentle Annie Road, Bindawalla Road and Norton Road.</li> <li>Delivery of 2015 betterment works will be required by 30 June 2017 in accordance with NDRRA requirements.</li> </ul>

#### Other 2015 Event special funding packages

The status of other Category C and D special funding packages approved in relation to Tropical Cyclone Marcia is summarised as follows:

Package	Purpose	Status
<b>Clean-up and restoration of national parks, beaches and recreational assets (\$6 million)</b>	<ul style="list-style-type: none"> <li>To clean-up and repair community infrastructure such as picnic areas, walking tracks and associated amenities</li> </ul>	<ul style="list-style-type: none"> <li>The Authority received EOIs from seven applicants for more than \$16 million</li> <li>To date, nine submissions worth \$4.6 million have been approved across the seven applicants.</li> <li>The Authority is currently finalising the allocation of the remaining funding available under the package.</li> </ul>
<b>Green waste clean-up (\$1 million)</b>	<ul style="list-style-type: none"> <li>To assist with the costs of green waste clean-up and removal activities from private properties and businesses</li> </ul>	<ul style="list-style-type: none"> <li>The Authority sought EOIs from the four LGAs eligible for funding allocations (Rockhampton, Livingstone, Banana and North Burnett)</li> <li>Following approval of a submission for Rockhampton Regional Council in January, the full \$1 million funding has now been allocated across three councils.</li> </ul>
<b>Industry Recovery Officers (\$750,000)</b>	<ul style="list-style-type: none"> <li>For placement of industry recovery officers (IRO) to provide recovery information and support to primary producers in the worst affected areas</li> </ul>	<ul style="list-style-type: none"> <li>Queensland Department of Agriculture and Fisheries (DAF) appointed the Queensland Farmers Federation (QFF) to manage the IRO program, with IRO officers located with Growcom, Queensland Dairyfarmers Organisation, Ag-Force and the Nursery and Gardening Industry Queensland</li> <li>IROs commenced work in December, and are working directly with affected primary producers to better manage business risks associated with climate variability.</li> </ul>
<b>Community Recovery Package (\$5.1 million Category C)</b>	<ul style="list-style-type: none"> <li>To engage community development officers and personal support managers and case workers to aid the recovery of severely affected communities in Rockhampton, Livingstone, Banana, North Burnett and part of Gladstone LGAs.</li> </ul>	<ul style="list-style-type: none"> <li>Package is being managed by Queensland Department of Communities, Child Safety and Disability Services (DCCSDS)</li> <li>Livingstone, Gladstone, North Burnett and Banana councils and Rockhampton Uniting Care Community have appointed staff and commenced delivery of Community Development and Personal Support &amp; General Counselling programs across each of the five affected communities.</li> <li>Relationships Australia and Uniting Care Community have, amongst other things, provided 434 hours of Personal Support and General Counselling services, undertaken stakeholder and community engagement.</li> </ul>

(Source: The Authority, DCCSDS and DAF; 31 January 2015)

### 3.5 Severe Tropical Cyclone Marcia Recovery Plan - status update

The destructive winds, heavy rainfall and flood events of Severe Tropical Cyclone Marcia, which crossed the Queensland coast on 20 February 2015, have had a catastrophic effect on many Queensland communities. The scale and scope of damage from TC Marcia has seen the activation of NDRRA in 19 local government areas.

In the aftermath of the event, the Severe Tropical Cyclone Marcia Recovery Plan (Recovery Plan) was prepared to guide activities to help ensure that impacted communities recover as quickly as possible.

The Recovery Plan provides strategic guidance for the coordination and management of recovery, reconstruction and disaster resilience activities and initiatives undertaken by the Queensland Government, local governments, industry and other stakeholders after the event. It also provides strategies to work with affected communities in their recovery process.

Functional Recovery Groups were established to lead and coordinate the planning and implementation of State whole-of-government recovery across five lines of recovery.

On final reporting by the Department of Infrastructure, Local Government and Planning (DILP) as at 18 November 2015, key metrics on the progress of recovery were as follows:

Functional Recovery Group	Status
<b>Human &amp; Social</b> <i>To lead and coordinate the planning and implementation of human and social recovery activities</i>	<ul style="list-style-type: none"> <li>NDRRA financial assistance of \$14.7 million has been provided to individuals and families under the Personal Hardship Assistance Scheme (Immediate Hardship Assistance, Structural Assistance Grants, Essential Household Content Grants, Red Cross Food Vouchers) and Essential Services Safety Reconnections Scheme Grants</li> <li>4,977 people had been seen on 3,856 outreach visits</li> <li>Queensland Health has engaged mental health staff to deliver mental health services to those severely affected by the event for a two year period.</li> <li>An update on the status of the \$5.1 million NDRRA Category C Community Recovery package is provided in Section 3.4 of this report.</li> </ul>
<b>Economic</b> <i>To advise the Government on economic impacts and provide information on needs of local government and industry getting the economy back to full production.</i>	<ul style="list-style-type: none"> <li>NDRRA financial assistance to primary producers, small business &amp; not for profits of more than \$12 million paid for freight subsidies and natural disaster grants and loans.</li> <li>Estimates suggest that for Queensland's primary producers the resulting gross damage to agriculture, including production and infrastructure, will be between \$150 million and \$200 million. The crops affected included pineapples in Yeppoon, mung beans in the Callide Valley and around Monto, cotton in the Callide Valley and citrus trees around Gayndah, where tonnes of debris were wrapped around the trees. Dairy producers located across the impacted zone were also affected, with an estimated 187,000 litres of milk lost. Of the 31 dairies in the region, 18 had major to severe damage to their properties.</li> </ul>
<b>Environment</b> <i>To guide the Government in achieving sustainable and resilient environmental recovery and coordinate activities which the make best use of resources.</i>	<b>Recovery complete</b> <ul style="list-style-type: none"> <li>All 77 national parks affected by Tropical Cyclone Marcia were fully re-opened by mid-June 2015.</li> <li>The strategic fire line network has been fully reopened, with 350km of fire lines repaired and reinstated across the impacted area</li> <li>QFES has worked with Queensland Parks and Wildlife Service, DNRM, local government, landholders, and the Bushfire and Natural Hazards Cooperative Research Centre to address community concern with fire risk and excess fuel loads. Activities have included clearing and creating fire breaks and containment lines, hazard reduction burns, updating wildfire operational plans and community education campaigns. These activities have been undertaken with the support of volunteers from the Rural Fire Service Queensland.</li> <li>Water quality monitoring and analysis of data is now complete, with results generally reporting that water quality levels returned to pre-cyclone conditions within two weeks.</li> </ul>
<b>Building</b> <i>To action temporary accommodation solutions for displaced people; repair and reconstruct state building assets; and provide building advisory services to support community recovery.</i>	<b>Recovery complete</b> <ul style="list-style-type: none"> <li>All 99 emergency housing assistance requests have been finalised</li> <li>All 1,403 units of damaged social housing accommodation are operational, all 147 damaged government assets have been restored to service and all schools and other government facilities have been made safe and operational.</li> <li>The Queensland Building and Construction Commission facilitated community forums in March 2015 to support the recovery of impacted community through facilitation of advice and dissemination of information.</li> </ul>
<b>Roads &amp; Transport</b> <i>Coordinates the efficient and effective delivery of road and transport recovery activities.</i>	<ul style="list-style-type: none"> <li>Program delivery is on track in line with the majority of works to restore impacted transport links expected to be completed by mid-2016, one year ahead of the required two-year NDRRA funding timeframe.</li> <li>An update on the status of the progress of recovery of State controlled roads and highways is provided in Section 3.3 of this report.</li> </ul>

In addition, the Queensland Government has provided a two-year \$40 million Special Assistance Package for Rockhampton Regional Council's Riverfront Project (\$15 million) and Livingstone Shire Council's Yeppoon Foreshore Revitalisation project (\$25 million) to assist community recovery. Both projects have commenced design works.

(Source: DILP, 18 November 2015)



### 3.6 Program spotlights

#### Tablelands Regional Council Vital community link Seamark Road Bridge opens early

When unprecedented severe flooding inundated the Tablelands region in February 2015, the Seamark Road Bridge near Tarzali was unable to withstand the huge torrent that swept through the area.

The bridge was badly damaged with the sheer velocity of floodwaters causing severe erosion of the bridge abutments, structural cracking on the concrete piers supporting the bridge, as well as erosion of the bitumen surface rendering it unusable.

Seamark Road is a no-through road with around 30 property owners located on the west side of the bridge. With no alternative route, residents including families with young children and elderly residents were stranded, unable to access food, healthcare and schools.

Tablelands Regional Council restored access with a temporary bridge. However, with a low 10-tonne limit, residents were unable to transport the building materials required to repair flood damage to their properties and primary producers could not transport livestock and produce to market.

Tablelands Regional Council Mayor Rosa Lee Long said the situation was difficult for residents living on Seamark Road.

“Families could not access the important services they needed. We even heard of one family in the middle of moving house who had their furniture stranded in Malanda because the truck could not get across the bridge,” Mayor Lee Long said.

“The loss of the bridge was also impacting the local agricultural industry, causing additional strain on families already doing it tough.”

The situation was serious enough for Seamark Road residents that Council worked with the Queensland Reconstruction Authority to prioritise assessment for NDRRA funding to help get the bridge built back faster.

Cr Lee Long said the construction of the bridge started in October 2015 and was completed in late December 2015.

“Restoring this 16-metre-long, four-metre-wide one-way bridge was a vital project for the local community and was delivered thanks to the joint efforts of all three levels of government working together to deliver for the good of the community,” Cr Lee Long said.

“We are pleased the works were able to be finished so quickly and it is a credit to our staff that this project was delivered ahead of schedule within budget.

“The newly restored bridge has a 44-tonne capacity which meets the needs of residents and primary producers using the bridge.

“This goes a long way towards helping our region recover and rebuild.”



*Right: Seamark Road Bridge pictured before reconstruction, during project works*

## 3.6 Program spotlights (continued)

### Western Downs Regional Council Resilience recognition



Western Downs Regional Council was recently recognised with a High Commendation at the Get Ready Queensland Resilient Australia Awards 2015 for the Mercy Pedestrian Bridge in Dalby.

The original Mercy Pedestrian Bridge was a six-span, timber bridge that was closed after it was severely damaged by the high-flowing floodwaters and debris during the January 2013 Tropical Cyclone Oswald event.

The bridge is important to the local community as it provides a safe pedestrian route across Myall Creek to Dalby State Primary School for students, teachers and support staff who attend the school, as well as parents and guardians who drop off and pick up students on foot.

Mercy Pedestrian Bridge also provides essential access to the residents on the south-west side of Myall Creek with access to Dalby's CBD.

Thanks to funding from the 2013 Betterment program, Western Downs Regional Council was able to replace the old timber bridge with a new 24-metre, single-span, composite fibre bridge.

Council spokesperson for works and engineering services Councillor Andrew Smith said it was obvious that for the community to have a longer-lasting asset, council would need to replace the damaged timber bridge with a more flood-resilient structure.

"Congratulations to all those involved in this project; these awards provide a great opportunity to showcase work that is often unrecognised and inspires others to think about how they can be more disaster-resilient," Cr Smith said.

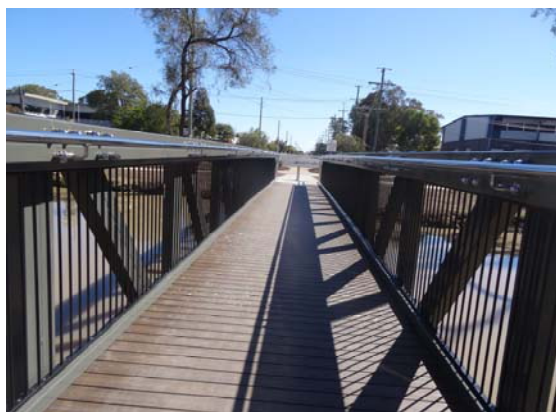
"The Mercy Pedestrian Bridge is a great example of how multiple agencies can work together to help not only improve our community's resilience and preparedness during natural disaster events, but to show how innovative design can provide a safer and value-for-money asset.

"The community now has a more flood-resilient bridge that requires minimal maintenance that will last 50 to 75 years," he said.

Construction on Mercy Pedestrian Bridge started in March 2014 and was completed in October 2014.

Mercy Pedestrian Bridge was one of five projects Western Downs Regional Council delivered through the 2013 Betterment Fund with the other projects being for Kangaroo Creek Crossing on Clifford Road; Pelican Back Road; Roche Creek Road and Jimbour Station Road.

The total project cost for Council's betterment projects was approximately \$1.9 million with approximately \$1.2 million provided by the joint Commonwealth-State government Betterment Fund.



*Left (from top): Mercy Pedestrian Bridge closed to pedestrians following damage in 2013; during construction; and on completion of construction*

### 3.6 Program spotlights (continued)

#### Toowoomba Regional Council Toowoomba reflects on fifth anniversary of 2011 floods

Queensland will never forget the events that took place in the picturesque Darling Downs city of Toowoomba in early January 2011.

Unprecedented flash flooding surged through the streets of Toowoomba on the afternoon of 10 January 2011, described as an 'inland tsunami' due to the sheer force and speed of the floodwaters which rushed through the city. Three lives were lost and the damage and destruction was widespread with cars washed away and property destroyed.

The harrowing images of the flood, seen around the world, became iconic capturing the destructive forces of nature and the extent of the crisis faced by Queensland.

Five years on, the incredible resilience and strength of the community is apparent as Toowoomba has rebuilt its city following the events of 2011 and further flooding in 2013 and 2014.

Toowoomba Regional Council Mayor Paul Antonio said the flood event of 10 and 11 January 2011 across the region left indelible memories for anyone who witnessed the surging water or saw unimaginable pictures and vision of the disaster that isolated the city and cut off much of the broader region.

"Most importantly, we recall the tragic loss of three lives that occurred in the Toowoomba Region at that time," Cr Antonio said. "While it is a time for reflection, we also can take great pride in the projects completed since then that have made our region a much safer and flood resilient place to live."

Residents can be assured Council has worked to make public safety the top priority when undertaking reconstruction and mitigation jobs.

"The former Council started the mammoth rebuilding process with the assistance of the Queensland Reconstruction Authority with funding provided through the NDRRA program.

"The last of more than 1800 projects valued at more than \$200 million was completed last year. I am confident the region has vastly improved infrastructure that will offer greater resilience to withstand future flooding.

"Council's top priority has been to improve public safety and upgrade our flood immunity and our awareness about preparing for inevitable future events," he said.

Toowoomba's reconstruction program included \$25 million for flood mitigation projects to improve the city's resilience for future flooding. The Commonwealth and Queensland Governments approved \$20 million NDRRA exceptional circumstances Category D funding while Toowoomba Regional Council contributed \$5 million to the flood mitigation projects.

Some of the key projects delivered with the NDRRA Category D funding include new detention basins at Ballin Drive Park and Garnet Lehmann Park and the East Creek channel works to increase capacity between James Street and Creek Street by upgrading the Mary Street culvert.



January 2011 - Floodwaters through Toowoomba CBD



July 2015 - Ballin Drive detention basin following flood mitigation works



July 2015 - Garnet Lehmann detention basin following flood mitigation works

## **Section four: Communications**



## 4.0 Communications

The Authority is focused on building stakeholder confidence in the reconstruction by ensuring consistent and regular communication of public information.

### 4.1 Communicating progress

#### Media analysis

There has been a total of 156 media items in January 2016 (89 print – 57%, 35 TV – 22%, 32 radio – 21%), which reached a cumulative audience of 8.7 million people, with the focus this month being on widespread monsoonal flooding in the Gulf of Carpentaria and the fifth anniversary of the devastating 2011 Queensland Floods.

There were media mentions for these events as well as for regions recovering from other natural disaster events, including articles in The Australian, Australian Financial Review, Blackwater Herald, Bowen Independent, Cairns Post, Capricorn Coast Mirror, Central and North Burnett Times, Central Queensland News, Central Telegraph Biloela, Clifton Courier, The Courier-Mail, Daily Mercury, Dalby Herald, Fraser Coast Chronicle, Gladstone Observer, Gympie Times, Herbert River Express, High Country Herald, Innisfail Advocate, Kilcoy Sentinel, Maryborough Herald, Rockhampton Morning Bulletin, Bundaberg News Mail, North Queensland Register, Oakey Champion, Port Douglas and Mossman Gazette, Queensland Country Life, The Sunday Mail, Tablelands Advertiser, Tamborine Times, Toowoomba Chronicle, Townsville Bulletin, Western Times and the Whitsunday Times; TV coverage on the ABC, 10, WIN, and Seven networks throughout the State; and radio mentions on ABC Radio Queensland, 2GB Sydney, 4BC Brisbane, 4CA Cairns, 4GR Toowoomba, 4RO Rockhampton, and SEA FM Rockhampton.

Making news in January 2016 was monsoonal flooding in the Gulf of Carpentaria that was activated for NDRRA. This event received widespread coverage across all media including articles in Herbert River Express, Tablelands Advertiser, Cairns Post, Western Times and the North Queensland Register, and TV and radio coverage on Channels 7, 9, WIN and 10 networks and across ABC Queensland.

Also making news in January was fifth anniversary of the devastating 2011 Queensland Floods, this saw commemorative coverage in the The Courier-Mail and The Sunday Mail.

#### Engagement

On 4 January 2015, **Queensland Deputy Premier and Minister for Infrastructure, Local Government and Planning Jackie Trad** along with **Acting Authority Chief Executive Officer Brendan Moon** visited five councils that were heavily affected by the Gulf of Carpentaria Monsoon Trough event. They inspected damage from flooding and met with the respective Mayors (or Acting Mayors) from Mount Isa City Council in Mount Isa, Cloncurry Shire Council in Cloncurry, McKinlay Shire Council in Julia Creek, Carpentaria Shire Council in Karumba and Normanton, and Burke Shire Council in Burketown.

On 12 January 2016, **Deputy Premier Trad** visited North Burnett Regional Council and discussed Council's reconstruction activities with North Burnett Regional Council Mayor Don Waugh.

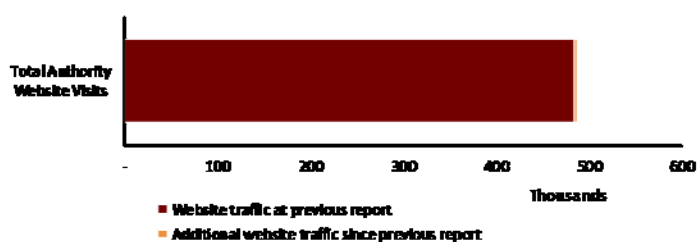
#### Communications

There are a number of methods available to the public to communicate with the Authority.

The Authority's website provides information to the public and continues to be enhanced with ongoing updates, including the information about Betterment projects and current recovery efforts. There has been a large number of visits to the website since it was launched on 18 February 2011. At 31 January 2016, total website visits amounted to 486,854 – a 0.5 per cent increase since last month. (See Figure 5.1.1)

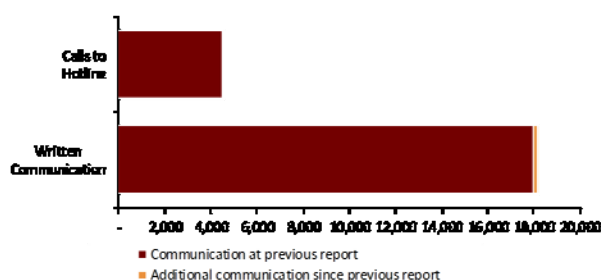
In January, the Authority received an additional 28 calls to its dedicated hotline and 146 additional pieces of written correspondence were received. (See Figure 5.1.2)

Fig. 5.1.1 Website traffic



(Source: the Authority at 31 January 2016)

Fig. 5.1.2 Communications



## 4.2 Media reports

INSIGHT | 2015 FLOODS



Courier Mail — 9 January

► RESILIENT AUSTRALIA GOVERNMENT AWARD

# Council's role recognised

CYCLONE Marcia devastated the Capricorn Coast region, but Livingstone Shire Council's response to the natural disaster was imperative in getting residents back on their feet.

Which is why it was presented with the Resilient Australia Government Award as part of the Federal Government's Resilient Australia Awards.

The Resilient Australia Awards is a national program recognising and promoting initiatives which strengthen community disaster resilience across the nation.

Mayor Bill Ludwig said the award has recognised council's success in pro-actively implementing a strategic and well-co-ordinated approach in response to the impacts of Tropical Cyclone Marcia.

"While council is honoured to receive this award in many ways we see it as an award for all those who play a role in working with us to develop, co-ordinate and implement our recovery and resilience building strategies," Cr Ludwig said.

"The key to implementing those strategies was the establishment of specific taskforces and partnering with government and

non-government stakeholders to ensure the broadest possible focus on delivering the diverse elements of the recovery.

"The taskforces focused both individually and collectively on the broader areas of Community Development, Regional Economic Development, Built Environment and Infrastructure, and Environment and Regulatory.

"Despite the many challenges Cyclone Marcia has required us to face and deal with, the collaborative approach we have undertaken and co-ordinated through our taskforces has enabled and facilitated extremely positive recovery outcomes.

"The most important outcome has been the depth and strength of the community resilience and capacity building that Livingstone is proud to have been able to achieve.



...we see it as an award for all those who play a role.



WILLIE BIRCH: Mayor Bill Ludwig and Department of Infrastructure, Local Government and Planning Northern Region regional director Jo Stephenson. PHOTO CONTRIBUTED RGL

Capricorn Coast Mirror—6 January

Central & North Burnett Times—14 January



TORN UP: Magenta Langton Road was one of 2500 sites to be repaired over the next nine months after damage in 2015 storms. Picture: Central Highlands Regional Council.

## CQ 2015 roadwork starts

RESTORATION work has begun on roads in the Central Highlands damaged by heavy rainfall and flash flooding in January 2015.

The \$19.8 million project is being delivered under the Natural Disaster Relief and Recovery Arrangements (NDRRA), a joint Australian (75 per cent) and Queensland (25 per cent) government initiative.

"Their assistance in getting our road network back on track is most appreciated," Central Highlands mayor Peter Maguire said. "It's been almost one year since wild weather and heavy downpours battered the region, so it's fantastic to finally get the ball rolling on some much-needed repairs."

The project will target some 2500 sites across the

region and is expected to take nine months to complete.

Some of the major roads included in the program are: Redcliffe Rd (East), Wealandangle Rd (South), Arcadia Valley Rd (South), and Jo Jo Road (Central).

Four main contractors will carry out the works and residents are asked to slow down around roadworks.

**Drought and flood**  
MURWEH and Quilpie are among six more councils eligible to receive assistance under the Natural Disaster Relief and Recovery Arrangements (NDRRA).

Fire and Emergency Services' Bill Byrne said the six would join 18 other councils already registered. The other four councils are Barcoo, Douglas, Hope Vale and Yarrabah.

Heavy rain across the Gulf of Carpentaria and Cape York Peninsula had caused localised flooding, he said.

Western Times — 21 January



TORN UP: Magenta Langton Road was one of 2500 sites to be repaired over the next nine months after damage in 2015 storms. Picture: Central Highlands Regional Council.

## CQ 2015 roadwork starts

RESTORATION work has begun on roads in the Central Highlands damaged by heavy rainfall and flash flooding in January 2015.

The \$19.8 million project is being delivered under the Natural Disaster Relief and Recovery Arrangements (NDRRA), a joint Australian (75 per cent) and Queensland (25 per cent) government initiative.

"Their assistance in getting our road network back on track is most appreciated," Central Highlands mayor Peter Maguire said. "It's been almost one year since wild weather and heavy downpours battered the region, so it's fantastic to finally get the ball rolling on some much-needed repairs."

The project will target some 2500 sites across the

region and is expected to take nine months to complete.

Some of the major roads included in the program are: Redcliffe Rd (East), Wealandangle Rd (South), Arcadia Valley Rd (South), and Jo Jo Road (Central).

Four main contractors will carry out the works and residents are asked to slow down around roadworks.

North Queensland Register — 21 January



Sunday Mail — 10 January 2016

## Relief help extended to Mareeba

MAREEBA Shire Council has been added to the list of councils across Queensland that is now able to access natural disaster assistance.

Minister for Fire and Emergency Services Bill Byrne said there were now 25 councils activated under Natural Disaster Relief and Recovery Arrangements.

"While the heavy rainfalls across Queensland have been welcomed, the impact this significant rain has on some communities is not always positive," he said.

"The ongoing rain in Gulf of Carpentaria, Cape York Peninsula and into Western Queensland continues to cause localised flooding and cut some communities off.

"It is critical that we provide assistance to these councils."

Cairns Post — 28 January

ACTING PREMIER VISIT

## The big difference a year makes

ACTING Premier Jackie Trad first visited Monto in March last year in what was not one of the town's finest moments.

"When I first came up here it was very soon after Cyclone Marcia and the flooding event," Ms Trad said.

"It's a much different place to what it was back then and it's great to see some of the infrastructure repaired and rebuilt."

Her concern at the time was to use money effectively.

"I think it has been used effectively, there'll be a discussion later in council about whether we can use the unspent funds for additional purposes," she said.

Mayor Don Waugh said Ms Trad's visit proved vital in completing works across the region as it established a relationship between North Burnett and her department.

## Roadworks almost done

WORK on Yerra Rd, west of Maryborough, is drawing to a close.

The Fraser Coast Regional Council has embarked on a number of projects on Yerra Rd starting in 2010 with a \$402,000 project to replace an aging timber bridge over 18 Mile Creek with a concrete bridge. Road crews then undertook a \$400,000 project to re-align Yerra Rd, creating approaches to the bridge.

In March last year a \$600,000 contract to rebuild 580 metres of Yerra Rd and 70 metres of Plerwa Rd at the intersection of the two roads was completed.

The council received \$50,492 from the State Government Betterment Fund and \$167,000 from the state and federal governments under the Restoration of Essential Public Assets Fund, after the road was damaged in the 2011 floods and again in 2012 and 2013 floods.

Work on a \$72,502 project on the northern side of Plerwa Rd to repair 600 metres of Yerra Rd is drawing to a close.

"Repairing the road is an ongoing process."

Infrastructure and Planning Portfolio Councillor Trevor McDonald



ARE WE THERE YET? Primary Production and Rural Infrastructure Portfolio Councillor James Hansen, JAC Civil site supervisor Simone Betts, Fraser Coast Regional Council Executive Manager Works and Services Bryan Hart and Infrastructure and Planning Portfolio Councillor Trevor McDonald check progress on Yerra Rd. PHOTO: CONTRIBUTED

McDonald said. "Council has almost 1,500 km of sealed road in its network and we've allocated \$46 million to build new and repair roads

in the current budget." "Yerra Rd was an important link for the region's agriculture sector," Primary Production and Rural Infrastructure

Portfolio Councillor James Hansen said. "Council is investing in regional roads and bridges to ensure the prosperity of the region."

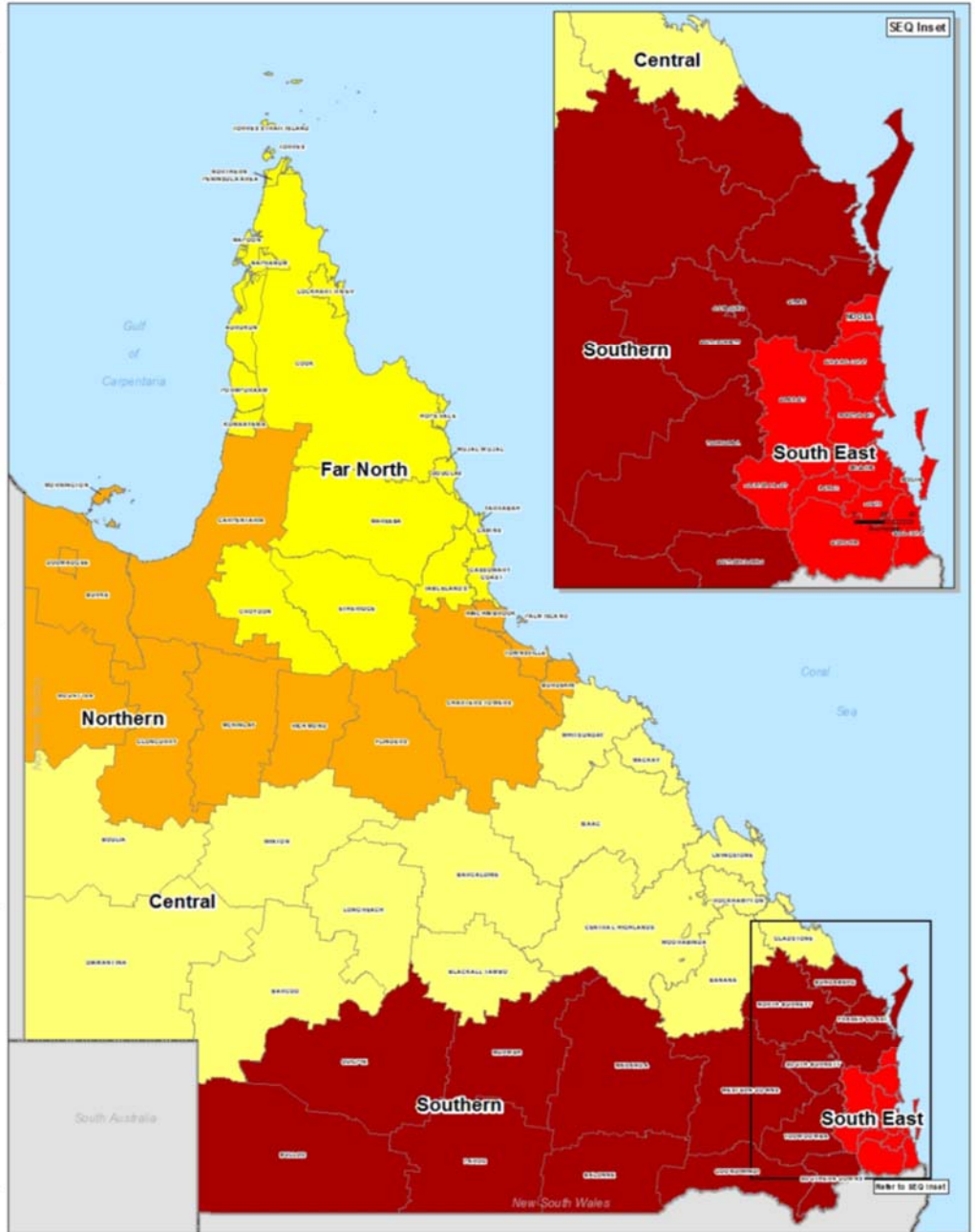
Maryborough Herald—7 January

North Queensland Register—21 January

# Appendices

# Appendix A: Local Government Areas by Region

Region	Local Government Areas (LGA's)	
<b>Far North Queensland (FNQ)</b>	ASC	Aurukun Shire Council
	CRG	Cairns Regional Council
	CCRC	Cassowary Coast Regional Council
	CoSC	Cook Shire Council
	CrSC	Croydon Shire Council
	DSC	Douglas Shire Council
	ESC	Etheridge Shire Council
	HVASC	Hope Vale Aboriginal Shire Council
	KASC	Kowanyama Aboriginal Shire Council
	LRASC	Lockhart River Aboriginal Shire Council
	MASC	Mapoon Aboriginal Shire Council
	MbaSC	Mareeba Shire Council
	NASC	Napranum Aboriginal Shire Council
	NPARC	Northern Peninsula Area Regional Council
	PASC	Pormpuraaw Aboriginal Shire Council
	TRC	Tablelands Regional Council
	TSC	Torres Shire Council
	TSIRC	Torres Strait Island Regional Council
	WWASC	Wujal Wujal Aboriginal Shire Council
	YASC	Yarrabah Aboriginal Shire Council
<b>North Queensland (NQ)</b>	BrdSC	Burdekin Shire Council
	BrkSC	Burke Shire Council
	CSC	Carpentaria Shire Council
	CTRC	Charters Towers Regional Council
	CISC	Cloncurry Shire Council
	DASC	Doomadgee Aboriginal Shire Council
	FSC	Flinders Shire Council
	HSC	Hinchinbrook Shire Council
	McSC	McKinlay Shire Council
	MoSC	Morrington Shire Council
	MICC	Mount Isa City Council
	PIASC	Palm Island Aboriginal Shire Council
	RSC	Richmond Shire Council
	TCC	Townsville City Council
	<b>Central Queensland (CQ)</b>	BanSC
BarRC		Barcaldine Regional Council
BarSC		Barcoo Shire Council
BTRC		Blackall-Tambo Regional Council
BOSC		Boulia Shire Council
CHRC		Central Highlands Regional Council
DSC		Diamantina Shire Council
GSC		Gladstone Regional Council
IRC		Isaac Regional Council
LSC		Livingstone Shire Council
LRC		Longreach Regional Council
MacRC		Mackay Regional Council
RRC		Rockhampton Regional Council
WRC		Whitsunday Regional Council
WSC		Winton Shire Council
WASC	Woorabinda Aboriginal Shire Council	
<b>Southern Queensland (SQ)</b>	BaSC	Balonne Shire Council
	BSC	Bulloo Shire Council
	BRC	Bundaberg Regional Council
	CASC	Cherbourg Aboriginal Shire Council
	FCRC	Fraser Coast Regional Council
	GoRC	Goondiwindi Regional Council
	GRC	Gympie Regional Council
	MarRC	Maranoa Regional Council
	MuSC	Murweh Shire Council
	NBRC	North Burnett Regional Council
	PSC	Paroo Shire Council
	QSC	Quilpie Shire Council
	SBRC	South Burnett Regional Council
	SDRC	Southern Downs Regional Council
	ToRC	Toowoomba Regional Council
WDR	Western Downs Regional Council	
<b>South East Queensland (SEQ)</b>	BCC	Brisbane City Council
	GCCC	Gold Coast City Council
	ICC	Ipswich City Council
	LVRC	Lockyer Valley Regional Council
	LCC	Logan City Council
	MBRC	Moreton Bay Regional Council
	NSC	Noosa Shire Council
	RCC	Redland City Council
SRRC	Scenic Rim Regional Council	
SRC	Somerset Regional Council	
SCRC	Sunshine Coast Regional Council	



Disclaimer:  
This map has been prepared by the Dept. of Queensland, Energy,  
Water and Environment for the use of Queensland and outside of that jurisdiction.  
The Queensland Reconstruction Authority does not warrant any data or design  
features appearing on the map or any information on this map.

Queensland Reconstruction Authority

**Local Government Areas  
and QldRA Reporting Regions**

Scale at A4: 1:6,700,000

**Legend**

- QldRA\_Region
- Far North Queensland
- North Queensland
- Central Queensland
- Southern Queensland
- South East Queensland
- Local Government Areas

As at 5/02/2014





This page left blank intentionally

